

Household Food Security in the United States, 1998 and 1999

Detailed Statistical Report

E-FAN-02-011
June 2002

By Barbara Cohen, James Parry, and Kenneth Yang, IQ Solutions

Abstract

This report provides estimates of the prevalence of food insecurity and hunger in U.S. households in 1998 and 1999 and trends since 1995 based on nationally representative data in the Food Security Supplement to the Current Population Survey (CPS). The report also provides estimates of the prevalence of hunger among children in food-insecure households (1995 through 1999) based on a child-specific scale. Prevalence rates are reported at the national level, along with breakdowns by household structure, race, ethnicity, income, metropolitan residence, and region.

For more information on Household Food Security in the United States, see the following reports:

- *Household Food Security in the United States, 1998 and 1999: Technical Report*, E-FAN-02-010
- *Household Food Security in the United States, 1999*, FANRR-8
- *Measuring Children's Food Security in U.S. Households, 1995-99*, FANRR-25

Acknowledgments

We would like to thank three people whose contributions were invaluable to this study. Mark Nord, our project officer at the Economic Research Service, provided continuous guidance, advice, and technical assistance throughout the project. Robert Lerner, IQ Solutions, provided statistical consultation to our programming staff. Larry Radbill, Mathematica Policy Research, Inc., provided statistical and technical expertise.

This study was conducted by IQ Solutions under a cooperative research contract with USDA's Economic Research Service (ERS) Food Assistance and Nutrition Research Program (FANRP): contract number 53-3K06-9-9 (ERS project representative: Mark Nord). The views expressed are those of the authors and not necessarily those of ERS or USDA.

TABLE OF CONTENTS

| | |
|---|----|
| Executive Summary..... | vi |
| 1. Introduction | 1 |
| A. The Food Security Measurement Project (Data Analysis For 1995-1997)..... | 3 |
| B. The Food Security Measurement Project (Data Analysis For 1998-1999)..... | 6 |
| 2. Methodology | 8 |
| A. The Current Population Survey..... | 8 |
| B. Classifying Households by Food Security Status | 8 |
| C. Weighting and Prevalence Rates..... | 10 |
| D. Assessing Change Over Time; Screening..... | 11 |
| E. Missing Data | 12 |
| F. Standard Errors..... | 12 |
| 3. Prevalence of Food Security, Discussion and Summary Tables..... | 14 |
| A. Prevalence of Food Security, 1998 | 14 |
| B. Prevalence of Food Security, 1999 | 17 |
| C. Prevalence of Experiences and Behaviors Represented by the Items in the Food Security Scale (1998 and 1999) | 21 |
| D. Prevalence of Food Insecurity and Hunger among Households with Children, 1998..... | 22 |
| E. Prevalence of Food Insecurity and Hunger among Households with Children, 1999..... | 25 |
| F. Prevalence of Food Insecurity with Hunger among Households with Children, 1995-1997..... | 26 |
| G. Changes in Prevalence of Food Insecurity and Hunger Between 1995 and 1999 | 28 |
| 4. Prevalence of Food Security, Detailed Tables | 34 |
| A. Prevalence of Food Security Among Households..... | 35 |
| A.1 Household Food Security Status, by Selected Household Characteristics, 1998..... | 36 |
| A.2 Number of Adults by Food Security Status of Household, by Selected Household Characteristics, 1998 | 37 |
| A.3 Household Food Security Status, by Selected Household Characteristics, 1999..... | 38 |

| | | |
|------|---|----|
| A.4 | Number of Adults by Food Security Status of Household, by Selected Household Characteristics, 1999..... | 39 |
| A.5 | Food Security Scale Item Responses, 1998 and 1999 | 40 |
| A.6 | Food Security Scale Item Responses Among Households with Children, 1998 and 1999..... | 41 |
| A.7 | Food Security Scale Item Responses, 1998 and 1999 (based on data adjusted to be comparable to 1995-1997)..... | 42 |
| A.8 | Food Security Scale Item Responses Among Households with Children, 1998 and 1999 (based on data adjusted to be comparable to 1995-1997)..... | 43 |
| B. | Prevalence of Food Insecurity and Hunger Among Households with Children..... | 44 |
| B.1 | Food Insecurity and Hunger Among Households with Children, by Selected Household Characteristics, 1998.... | 45 |
| B.2 | Number of Children in Households with Food Insecurity and Hunger, by Selected Household Characteristics, 1998..... | 46 |
| B.3 | Food Insecurity and Hunger Among Households with Children, by Selected Household Characteristics, 1999.... | 47 |
| B.4 | Number of Children in Households with Food Insecurity and Hunger, by Selected Household Characteristics, 1999..... | 48 |
| B.5 | Households With Hunger Among Children, by Selected Household Characteristics, 1995..... | 49 |
| B.6 | Households With Hunger Among Children, by Selected Household Characteristics, 1996..... | 50 |
| B.7 | Households With Hunger Among Children, by Selected Household Characteristics, 1997..... | 51 |
| B.8 | Number of Children in Households with Hunger Among Children, by Selected Household Characteristics, 1995..... | 52 |
| B.9 | Number of Children in Households with Hunger Among Children, by Selected Household Characteristics, 1996..... | 53 |
| B.10 | Number of Children in Households with Hunger Among Children, by Selected Household Characteristics, 1997..... | 54 |
| C. | Estimates of Change in Household Prevalence, 1995-1999 | 55 |
| C.1 | Household Food Security Status, by Selected Household Characteristics, 1998 (based on data adjusted to be comparable to 1995-1997) | 56 |
| C.2 | Number of Adults by Food Security Status of Household, by Selected Household Characteristics, 1998 (based on data adjusted to be comparable to 1995-1997) | 57 |

| | | |
|-------|--|----|
| C.3 | Household Food Security Status, by Selected Household Characteristics, 1999 (based on data adjusted to be comparable to 1995-1997) | 58 |
| C.4 | Number of Adults by Food Security Status of Household, by Selected Household Characteristics, 1999 (based on data adjusted to be comparable to 1995-1997) | 59 |
| C.5 | Change in Household Food Security, Food Insecurity and Hunger Status, by Selected Household Characteristics, 1996-1998 (based on data adjusted to be comparable to 1995-1997) | 60 |
| C.6 | Change in Household Food Security, Food Insecurity and Hunger Status, by Selected Household Characteristics, 1995-1999 (based on data adjusted to be comparable to 1995-1997) | 61 |
| C.7 | Change in Household Food Security, Food Insecurity and Hunger Status, by Selected Household Characteristics, 1997-1999 (based on data adjusted to be comparable to 1995-1997) | 62 |
| C.8 | Change in Prevalence of Hunger Among Children, by Selected Household Characteristics, (1996-1998, 1995-1999, 1997-1999) (based on data adjusted to be comparable to 1995-1997) | 63 |
| D. | Standard Errors of All Food Security Prevalence Rates | 64 |
| D.A.1 | Standard Errors of Household Food Security Status by Selected Household Characteristics, 1998 | 65 |
| D.A.2 | Standard Errors of Number of Adults by Food Security Status of Household, by Selected Household Characteristics, 1998 | 66 |
| D.A.3 | Standard Errors of Household Food Security Status by Selected Household Characteristics, 1999 | 67 |
| D.A.4 | Standard Errors of Number of Adults by Food Security Status of Household, by Selected Household Characteristics, 1999 | 68 |
| D.A.5 | Standard Errors of Food Security Scale Item Responses, 1998 and 1999 | 69 |
| D.A.6 | Standard Errors of Food Security Scale Item Responses among Households with Children, 1998 and 1999 | 70 |
| D.A.7 | Standard Errors of Food Security Scale Item Responses, 1998 and 1999 (based on data adjusted to be comparable to 1995-1997) | 71 |
| D.A.8 | Standard Errors of Food Security Scale Item Responses among Households with Children, 1998 and 1999 (based on data adjusted to be comparable to 1995-1997) | 72 |

| | | |
|------------------|---|----|
| D.B.1 | Standard Errors of Food Insecurity and Hunger Among Households With Children, by Selected Household Characteristics, 1998 | 73 |
| D.B.2 | Standard Errors of Number of Children in Households with Food Insecurity And Hunger, by Selected Household Characteristics, 1998 | 74 |
| D.B.3 | Standard Errors of Food Insecurity and Hunger Among Households With Children, by Selected Household Characteristics, 1999 | 75 |
| D.B.4 | Standard Errors of Number of Children in Households with Food Insecurity And Hunger, by Selected Household Characteristics, 1999 | 76 |
| D.B.5-7 | Standard Errors of Food Insecurity and Hunger Among Households With Children, by Selected Household Characteristics, 1995, 1996, 1997 | 77 |
| D.B.8-10 | Standard Errors of Number of Children in Households with Food Insecurity and Hunger, by Selected Household Characteristics, 1995, 1996, 1997 | 78 |
| D.C.1 | Standard Errors of Household Food Security Status, by Selected Household Characteristics, 1998 (based on data adjusted to be comparable to 1995-1997) | 79 |
| D.C.2 | Standard Errors of Number of Adults by Food Security Status of Household, by Selected Household Characteristics, 1998 (based on data adjusted to be comparable to 1995-1997) | 80 |
| D.C.3 | Standard Errors of Household Food Security Status, by Selected Household Characteristics, 1999 (based on data adjusted to be comparable to 1995-1997) | 81 |
| D.C.4 | Standard Errors of Number of Adults by Food Security Status of Household, by Selected Household Characteristics, 1999 (based on data adjusted to be comparable to 1995-1997) | 82 |
| End Notes | | 83 |
| References | | 84 |

EXECUTIVE SUMMARY

Since 1995, data from the Food Security Supplement to the Current Population Survey (CPS) have been analyzed annually as part of the Food Security Measurement Project. This report is the third in a series of detailed statistical reports on food security, insecurity, and hunger in U.S. households. It provides estimates of the prevalence of food insecurity and hunger in U.S. households in 1998 and 1999, along with the prevalence of food insecurity in households with children, and of hunger among children in those households (in 1995 through 1999), using a child-specific scale. Prevalence rates are reported at the national level, along with breakdowns by household structure, race, ethnicity, income, metropolitan residence, and region. This report also provides an assessment of the changes in prevalence of food insecurity and hunger for selected periods between 1995 and 1999.

The following highlights some of the key findings detailed in this report.

Prevalence of Food Insecurity and Hunger, 1998 and 1999

In 1998, 88.2 percent of all U.S. households were food secure throughout the entire year. Household food security was not attained at all times for approximately 12 million U.S. households. More than half of these were households with children (6.7 million). About 22 million adults and 14 million children lived in these food insecure households. Included among households classified as food insecure are those classified as “food insecure with hunger.” In these households, one or more members were hungry at some time during the year as a result of inadequate food supplies or resources for food. Included among the food-insecure households were 3.8 million classified as food insecure with hunger. About 6.5 million adults (3.3 percent) lived in food insecure households with hunger.

In 1999, 89.9 percent of all U.S. households were as food secure throughout the entire year. Food insecurity was registered by 10.5 million U.S. households again with slightly more than half being households with children (5.6 million households). Living in these food insecure households were 18.9 million adults and 12.1 million children. In 1999, 3.1 million households were food insecure with hunger, and these households included 5.1 million adults.

Prevalence of Hunger Among Children

In 1998, 331,000 households (0.9 percent of all households with children present) were food insecure with hunger among both adults and children. Approximately 716,000 children lived in these most severely food insecure households. Not all of these children experienced hunger, but either they or another child in the household did.

In 1999, about 219,000 households (0.6 percent of all households with children) were food insecure with hunger among both adults and children. About 511,000 children lived in these 219,000 households.

Similar analyses for 1995 through 1997 indicate that in 1995 and 1996 approximately one percent of all households with children were food insecure with hunger among children. In 1997, less than one percent (0.8 percent) of households with children were food insecure with hunger among children.

Prevalence of Food Insecurity Among Subpopulations, 1998 and 1999

While the food security prevalence rates were near the national average for many subgroups in the U.S. in both 1998 and 1999, some groups experienced notably higher rates of food insecurity and hunger. These included single-woman headed households with children, Black households, Hispanic households and Households with incomes below the poverty line. For several other subgroups, food insecurity and hunger were substantially lower than the national average rate: These included households with 2 adults and no children, households in which elderly people lived alone, households which included elderly people, households with income at or above 185% of the poverty line, and white, non-Hispanic households.

Changes in Prevalence of Food Insecurity and Hunger Between 1995 and 1999

Overall the proportion of households registering food insecurity declined by 1.6 percentage points from 1995-1999, and the percentage classified as food-insecure with hunger declined by 1.1 percentage points. Over the same period, the prevalence food insecurity with hunger among children declined 0.5 percentage points. The improvements in food security extended to almost all types of households and all regions of the country, including the groups with the highest rates of food insecurity and hunger.

1. INTRODUCTION

This is the third in a series of detailed statistical reports on food security, insecurity, and hunger in U.S. households. It reports on the prevalence of food insecurity and hunger in U.S. households in 1998 and 1999 based on nationally representative surveys conducted by the U.S. Census Bureau. The report provides national-level prevalence rates as well as breakdowns by household structure, race, ethnicity, income, metropolitan residence, and region.

Preceding reports in the series were:

- *Household Food Security in the United States in 1995, Summary Report of the Food Security Measurement Project.* (Hamilton, W., et al, 1997).
- *Household Food Security in the United States, 1995-1997: Technical Issues and Statistical Report.* (Ohls, J., L. Radbill, and A. Schirm, 2001).

In addition, overview reports were published as follows:

- *Household Food Security in the United States, 1995-1998, Advance Report.* (Bickel, G., S. Carlson, and M. Nord, 2000)
- *Household Food Security in the United States, 1999.* (Andrews, M., M. Nord, G. Bickel and S. Carlson, 2000).
- *Prevalence of Food Insecurity and Hunger, by State, 1996-1998.* (Nord, M., K. Jemison, and G. Bickel, 1999).
- *Measuring the Food Security of Children in U.S. Households, 1995-1999.* (Nord, M. and G. Bickel, 2002).

For more than 50 years the Federal government has administered various programs to reduce hunger in America. Although various nutrition-related and program specific surveys have been used throughout the years to monitor the success of these programs and the degree to which people in the United States consume adequate amounts of food, until 1995 there wasn't a succinct measure of hunger and food security used in these surveys. The Federal interagency food security measurement project was organized to address the need for a standardized mechanism and instrument for measuring and obtaining data on the prevalence of food insecurity or food sufficiency in the U.S. Their

efforts were based on prior work conducted in the early 1990's that defined the concept of food security and developed underlying individual and household indicators (Campbell, 1991; Cohen and Burt, 1990, Radimer et al., 1992 and Wehler et al., 1992). Food security measurement has been guided by these concepts and the definitions developed by an expert working group of the American Institute of Nutrition that were published by the Life Sciences Research Office (LSRO) of the Federation of American Societies for Experimental Biology (Anderson, ed. 1990). These are as follows:

- ***Food Security.*** “Access by all people at all times to enough food for an active, healthy life. Food security includes at a minimum: (1) the ready availability of nutritionally adequate and safe foods, and (2) an assured ability to acquire acceptable foods in socially acceptable ways (e.g., without resorting to emergency food suppliers, scavenging, stealing, or other coping strategies).”
- ***Food Insecurity.*** “Limited or uncertain availability of nutritionally adequate and safe foods or limited or uncertain ability to acquire acceptable foods in socially acceptable ways.”
- ***Hunger.*** “The uneasy or painful sensation caused by a lack of food. The recurrent and involuntary lack of access to food. Hunger may produce malnutrition over time...hunger...is a potential, although not necessary, consequence of food insecurity.”

Beginning in 1992, a Federal interagency project team began a systematic effort to develop a common battery of questions on food insecurity that could be administered regularly on Government-conducted national surveys as well as on state and local surveys. The culmination of their work was a survey module that was fielded for the first time as a new Food Security Supplement to the Current Population Survey (CPS) in April 1995. These questions obtained information about various aspects of food insecurity, as experienced in both the previous 30 days and the previous 12 months. To ensure that respondents are reporting on actions or concerns that result from financial constraints, every question includes a phrase such as “because we couldn't afford it” or “because there wasn't enough money for food”. It is recognized that there may be other valid reasons for household food insecurity, including functional ability and mobility issues faced by isolated elderly or chronically ill people. However, the measure does not capture food insecurity resulting solely from these non-financial circumstances. Since

1995, the Food Security module has been collected annually as the key component of a supplement to the CPS, alternating between Spring and Fall.

A. The Food Security Measurement Project (Data Analysis for 1995-1997)

Abt Associates worked closely with the Federal interagency food security project team to analyze the 1995 CPS food security supplement data. This team's first objective was to develop and test a scale that measured the severity of food insecurity for each household. The scale was developed using an Item Response Theory (IRT) model, which posits an underlying latent variable (in the present context, food insecurity and hunger) that cannot be observed directly but that can be estimated from respondent answers to a set of instrument items. The statistical model assigns a relative "severity" to each of the 18 survey questions on which the scale is based, ranging from such low-severity items as whether the respondent "worried whether our food would run out" to severe items, such as a child skipping a meal because no food was available. Taken together, these severity-level measures establish the measurement scale, which effectively captures the full range of severity of food insecurity as experienced in U.S. households. Each household's food security scale score is computed on the basis of the total number of affirmative answers to the 18 increasingly severe food security questions (or 10 questions if no children are present in the household). This scale is then divided into ranges of severity that classify households in the following categories:

- **Food secure:** Households show no, or minimal, evidence of food insecurity.
- **Food insecure with no hunger evident:** Food insecurity is evident in household concern about adequacy of household food supply and the adjustments made by the household in managing their supplies, including reducing the quality of food and increasing unusual coping patterns. There is little or no reduction in household members' food intake.
- **Food insecure with hunger evident:** Adults in the household have reduced their food intake to an extent that implies that they have repeated experiences of the physical sensation of hunger.

In the report on 1995 data, the third category was subdivided into two categories. In the category "food insecure with hunger (moderate)" the hunger experiences were

usually limited to the adults in the household. The category “food insecure with hunger (severe)” included hunger experienced by children in the household. It was defined as:

- **Food insecure with severe hunger evident:** For households with children, this level implies that the children’s food intake has been limited to an extent that the children have repeated experiences with the physical sensation of hunger. For households without children and for adults living in households with children, this level implies a more severe level of adult hunger.

The more severe category was specifically intended to identify households with hunger among children. In subsequent reports (on 1996 through 1999 data), the two hunger categories were combined because it was found that the “severe” category did not reliably identify households with hunger among children. In this report as well, the two household-level hunger categories are combined, and a separate child-specific scale is used to identify households with hunger among children.

It is important to note that the scale represents the food security status of a household, not of specific individuals within the household. Correspondingly, if a household’s status is reported as “food insecure with hunger” it does not mean that all members of the household necessarily experienced hunger but that one or more members of the household had this experience at some time within the referenced time period.

The food security scale, as developed from the 1995 data, was found to perform quite well on standard tests of statistical reliability, and the model-based ranking of food security questions on which it is based has strong intuitive face validity. In addition, as compared with methods involving observing nutrient intake or nutrient availability, the food security scale represents an inexpensive approach to assessing food security for large populations, and it provides an assessment tool that covers a longer period than just a day or a week.

Another important objective of the food security analysis was to produce estimates of the prevalence of household-level food insecurity for the 12-month time period. The overall prevalence of food insecurity among U.S. households (all levels of insecurity) was estimated at 11.9 percent, equivalent to 11.94 million households in 1995.

This varied by household type, from 19.5 percent among households with children under 6 years of age, to 5.9 percent among households with elderly members but no children (Hamilton, 1997). Estimates of prevalence were also made for various subpopulations based on household characteristics, area of residence, and geographic region. Given that this was the first study using this food security measure, comparisons to similar estimates were not possible. However, comparisons were made to other somewhat comparable work conducted on food security (Cohen, et al., 1993; Wehler et al., 1991; USDA Continuing Survey of Food Intakes by Individuals, 1989-1991), and prevalence rates were found to be consistent with these earlier estimates.

Continuing the work begun by Abt Associates, Mathematica Policy Research (MPR) analyzed the 1996 and 1997 CPS food security data (Ohls, et al., 1999, 2001). The objectives of their work included the validation of the original scale, testing the stability of the scale over time and across population subgroups, development of prevalence estimates, and the comparison of these estimates to those from 1995 data. Their results verified the stability and robustness of the scale and measurement techniques utilized. The order of the calibrated items varied only at two points with two sets of inversions: “children not fed balanced meals/adult cut or skipped meals” and “children fed few, low-cost foods/respondent not eating balanced meals.” The size of these changes was small and was not substantively significant. They report that, when tracked over time, food security did not change substantially from 1995 to 1996, but did improve significantly in 1997.

The Food Security core survey module is already being used in several other surveys including: the 5-year longitudinal Survey of Program Dynamics, the Early Childhood Longitudinal Study, and the 4th National Health and Nutrition Examination Survey (NHANES-4). The core module is also being used by states and local groups to assess the food security status of the households within their communities.

B. The Food Security Measurement Project (Data Analysis for 1998-1999)

The work conducted on 1995-1997 data suggested the need to explore some additional issues, including developing methods to measure the food security status of individuals in a household and developing a scale that is appropriate for measuring the food security of children. Methods for measuring individuals' food security experiences are under development in connection with collection and analysis of data from NHANES IV. Work on the development of a children's food security scale is currently being conducted by USDA, with some results reported in this paper.

The household scale, whether with three or four categories, falls short of adequately describing the prevalence of hunger among children in a household. When the scale was first developed, the fourth category, "food insecure with severe hunger", was intended to provide a proxy for children's hunger in U.S. households. However, households in which children are experiencing hunger may not reach the level of severity of hunger among adults to be included in this fourth category and thus may be under-represented. On the other hand, households falling into this most severe category also include households with children in which only the adults are experiencing more severe levels of hunger and thus the proxy measure could also over-represent the prevalence of children's hunger. In large part, these distortions are related to the age of children in the household. While young children are usually protected from hunger even when adults experience quite severe food deprivation, older children are often treated more like adults and may experience more food insecurity with hunger than the younger children in the household.

To address this issue, a new children's food security scale has been developed (Nord and Bickel, 2001; Nord and Bickel, 2002). The children's food security scale is calculated from the eight items that relate specifically to children's experiences with food and hunger. A household affirming five or more of the eight child-referenced items is considered to be food insecure with hunger among children.

This report complements the statistics presented in earlier reports based on 1998 and 1999 data by providing:

- additional detail on prevalence estimates of food security, food insecurity, and hunger, at the household-level for all households, and for the adults in those households;
- estimates of the prevalence of food insecurity in households with children, and of hunger among children in those households, using a child-specific scale;
- an assessment of the changes in prevalence of food insecurity and hunger for selected periods between 1995 and 1999; and,
- standard errors for all prevalence and change estimates.

The report begins with a descriptive methodology chapter, and is followed by the an overview of the prevalence of food security, food insecurity and hunger. Following this, the final chapter provides detailed tables, presenting all relevant statistics and their standard errors.

A separate technical report, *Household Food Security in the United States, 1998 and 1999: Technical Report* (Cohen, et. al., 2002), on the analysis of the 1998 and 1999 Food Security Supplement Data includes: a detailed review of the methodology used for data analysis; a discussion on the balanced repeated replication techniques used to calculate standard errors; an assessment of the use of generalized variance functions (GVFs) developed by the Census Bureau for estimating standard errors; an assessment of the influence of the alternation of survey periods between Spring and Fall for the 1995-1999 CPS Supplement; and a presentation of 1998 and 1999 item calibrations and household scores developed through the use of IRT modeling and a discussion on the impact of different IRT modeling applications on food security analysis.

2. METHODOLOGY

The methodology and data sources used to derive estimates of the number of households experiencing food security, food insecurity and hunger are similar to those described in previous reports. This chapter presents details on these sources and analytical methods.

A. The Current Population Survey

The data analyzed in this report are from the Food Security Supplement to the Current Population Survey (CPS). The CPS is a national labor force study conducted by the U.S. Census Bureau for the Bureau of Labor Statistics. The survey, conducted on a monthly basis, includes a probability sample of about 50,000 households. To improve the reliability of estimates of month-to-month and year-to-year change, 8 panels are used to construct the sample each month. A sample unit (household) is interviewed for four consecutive months and then, after an 8-month rest period, for the same four months a year later. Each month a new panel of addresses, or one-eighth of the total sample, is introduced. The Food Security Supplement, which is sponsored by USDA, has been included once a year since 1995. However, the survey month has alternated between April and August/September with April being the survey time in 1995, 1997 and 1999, September being the survey time in 1996, and August in 1998.

B. Classifying Households by Food Security Status

Given the documented stability of the measurement construct and the reliability of the methods used to calculate prevalence estimates of food security status from 1995 through 1997, the analysis of 1998 and 1999 CPS food security supplement data utilized these same methods and measures. The criteria presented below (Exhibit 2.1) are used to classify households by food security status. Affirmative answers are counted for each household and the household's food security status is assigned based on that count. Households with children will have answered 18 items, while households without children will have answered only 10 items.

EXHIBIT 2.1 HOUSEHOLD FOOD SECURITY CLASSIFICATION

| | Households Without Children (10-item scale) | Households With Children (18-item scale) |
|---|--|---|
| Food Secure, No Indication of Food Insecurity* | 0 affirmatives | 0 affirmatives |
| Food Secure, but with some Indications of Food Insecurity* | 1, or 2 affirmatives | 1, or 2 affirmatives |
| Food Insecure | 3 or more affirmatives | 3 or more affirmatives |
| Food Insecure with Hunger | 6 or more affirmatives | 8 or more affirmatives |

*National statistical reports, including the present one, combine these two categories into one “food secure” category.

The recently developed children’s food security scale is used to classify households with children as to whether or not the children in the household were hungry because there was not enough money for food.

Children may be affected by levels of food stress well below the level of severity represented by the classification “food insecure with hunger among children.” Currently, work is being conducted to identify an appropriate threshold at a lower level of severity on the children’s scale that will identify households in which children’s normal eating patterns have been substantially disrupted, even if the reduction in food intake by children in that household has not been severe enough to result in hunger among the children. Since that work has not yet been completed, a broader picture of children’s food situation is presented in the present report by combining information from the household food security scale and the children’s hunger scale. The combined tabulation identifies households that are food secure, those that are food insecure without hunger, those that are food insecure with hunger among adults, but not children, and those that are food insecure with hunger among both adults and children. The parameters for the combined tabulation are presented in Exhibit 2.2.

Exhibit 2.2: Parameters for Tabulation of Food Security Status of Households with Children, Combining Information from the Household Food Security Scale and the Children’s Food Security Scale

| Food Security Category | Category Parameters |
|---|---|
| Food Secure | 0-2 items affirmed |
| Food Insecure without Hunger | 3-7 items affirmed |
| Food Insecure with Hunger Among Adults But Not Children | 8 or more items affirmed, including 0-4 child items |
| Food Insecure with Hunger Among Adults and Children | 8 or more items affirmed, including 5 or more child items |

Theoretically, the food insecure with hunger category might have been divided into three categories (food insecure with hunger among adults and not children, food insecure with hunger among adults and children, and food insecure with hunger among children and not adults). However, there were no cases in which households reported hunger among children and not adults. Thus, the tables for households with children do not include this category.

It is important to keep in mind that the results do not directly represent the total *number* of children who have experienced hunger or food insecurity. The questions do not specifically ask how many of the children living in the household have had food insecurity or hunger experiences, but ask whether any children living in the household have had such experiences. Thus the results represent either the *number of households* in which children have experienced hunger or the *number of children living in such households* (regardless of whether or not they themselves have directly experienced hunger).

C. Weighting and Prevalence Rates

The CPS assigns weights to each household and persons in those households so that the interviewed sample represents the total national non-institutionalized population. Weights are first assigned based on probability of selection into the sample and are then adjusted to match population controls for selected demographic characteristics at State

and national levels. All prevalence calculations use household weights adjusted for supplement non-response.

D. Assessing Change Over Time; Screening

The Food Security Supplement has been included in the Current Population Survey yearly since 1995. However, the data have not been collected in the same month in all years. The dates of collection were as follows: April 1995; September 1996; April 1997; August 1998; and April 1999. Although several comparisons have been made across the five-year time period, an analysis of the data indicates that the season in which the survey was conducted affected the annual prevalence estimates of food insecurity and hunger (see technical report, *Household Food Security in the United States, 1998 and 1999: Technical Report*, Cohen, et al., 2002). Therefore, to assess change over time, prevalence rates for 1998 and 1999 are compared to earlier years' surveys conducted in the same season; 1998 is compared to 1996, and 1999 is compared to 1995 and 1997. Tests of significance were conducted for all changes for which standard errors were available (1995, 1998 and 1999); these are reported in chapter 3, as relevant, but are not tabled. Estimates of change were assessed for statistical significance at the 90 percent confidence level.

To ensure comparability of prevalence estimates across years, data in each year had to be adjusted for differences in survey screening. Screening procedures were used to reduce respondent burden by skipping inappropriate questions -- or questions with known responses. This avoided asking any of the food security scale questions to higher-income households with no preliminary signs of food insecurity. Households screened out after the first few questions were classified as food secure. Although the 18 questions used in the CPS have remained the same since first implemented in 1995, the screening rules have been changed over time. In particular, different preliminary screens were tested in each of the first three years of the survey. Analyses have shown that a small proportion of the households screened out in years with more restrictive screens would have been classified as food-insecure using the screening procedures applied in other years (Bickel, Carlson and Nord, 1999).

In 1998, further changes in screening procedures and question order were introduced to minimize bias while keeping respondent burden low. The 1998 screening and question order remained unchanged in 1999, 2000 and 2001, and are expected to continue as the standard. To make prevalence rates comparable across years, “common screening” rules have been developed to be applied to the data after collection in all years (see *Household Food Security in the United States, 1998 and 1999: Technical Report* (Cohen, et. al., 2002) for specific screening procedures implemented). The rules follow the most restrictive screening procedures. That is, they screen a household out if it would have been screened out under any year’s screening protocol.

The prevalence statistics presented in this report for 1998 and 1999 are generally based on data as collected in those years, with no post collection adjustment for screening differences. However, when comparisons are made to earlier years’ estimates the common screen rules are applied to the 1998 and 1999 data as well as to the earlier years’ data.

E. Missing Data

There are very few missing responses to food security items. Less than one percent of respondents declined to answer, or did not know the answer to, any item they were asked. If no valid answers were provided, the household was excluded from the analysis completely. If some valid responses were provided and some items were missing, standard procedures were followed to impute the missing responses as described in *Household Food Security in the United States, 1998 and 1999: Technical Report* (Cohen, et. al., 2002) and in *Guide to Measuring Household Food Security, Revised 2000* (Bickel, et. al., 2000).

F. Standard Errors

A key activity in assessing prevalence estimates is determining their precision. This is important in assessing the overall accuracy of the estimates and is necessary for determining whether estimated changes over time or differences between population subgroups are statistically significant. Balanced Repeated Replication (BRR) procedures

were used to compute standard errors for the food insecurity prevalence estimates from the CPS food security supplements. (See the technical report *Household Food Security in the United States, 1998 and 1999: Technical Report* (Cohen, et. al., 2002) for details on how the BRR methods were applied to these data.) Standard errors are reported for all 1998 and 1999 prevalence estimates and for children's hunger prevalence estimates calculated for 1995-1997.

Note that standard errors of the numbers of food secure and food insecure households for subpopulations differ, although the standard errors for the corresponding percents are identical. This occurs because the denominator – the total number of households in the subpopulation – is also estimated with some error. Thus, the standard error of the numerical estimate includes error associated with both the total number of households in the subpopulation as well as the proportion of those households that are secure or insecure.

3. PREVALENCE OF FOOD SECURITY

This chapter presents an overview of estimated food security prevalence for the 12-month periods ending in August 1998 and April 1999. Section A presents 1998 prevalence estimates for the total U.S. population and for subgroups of the population. Section B presents the same for 1999. In Section C we present national prevalence estimates of conditions, experiences, and behaviors as represented by the individual items in the food security scale. Food security and hunger prevalence rates for households with children are presented in Section D for 1998, Section E for 1999 and in Section F for 1995-1997. The final section (Section G) presents estimates of change in national household prevalence of food insecurity and hunger from 1995 to 1999.

Summary tables are included in the text of this chapter. Detailed tables of prevalence rates for each analytic category, along with tables of standard errors are found in chapter 4. It should be noted that chapter 4 includes two sets of tables for most 1998 and 1999 statistics, one based on data as collected and the second based on data adjusted for cross-year comparability to account for differences in screening procedures. The latter should be used for comparisons to statistics from 1995-1997. Each section below begins by identifying the relevant tables in Chapter 4 and then presents an overview of key findings.

A. Prevalence of Food Security, 1998

1. Relevant Detailed Tables

Tables A.1 and A.2 in chapter 4 present details on national prevalence of food security in 1998. Table A.1 presents statistics on household food security status, while table A.2 presents statistics on the number of adults by the food security status of the household. Statistics in both of these tables are based on data as collected. That is, the data were not adjusted to be comparable to 1995-1997. Standard errors for these statistics are reported in tables D.A.1 and D.A.2. Tables C.1 and C.2 in Chapter 4 present similar information but have been adjusted to be comparable to 1995-1997. The standard errors for these tables are reported in tables D.C.1 and D.C.2. Each table presents

statistics for various subgroups of the population categorized by household composition, race and Hispanic ethnicity, household income-to-poverty ratio, area of residence and census geographic region.

2. Overview

Prevalence of Food Security Among All Households

In 1998 approximately 91 million households in the United States, 88.2 percent of all households, were food secure throughout the entire year (Table 3.1). Approximately 175 million adults (88.8 percent of all adults) and 57 million children (80.1 percent of all children) lived in food secure households.

Conversely, household food security was not attained at all times in 1998 for approximately 12 million U.S. households (11.8 percent of all households), more than half of which were households with children (6.7 million). About 22 million adults and 14 million children lived in these food insecure households.

Included among households classified as food insecure are those classified as “food insecure with hunger”. Those that are food insecure with hunger had one or more household members who were hungry at some time during the year as a result of inadequate food supplies or resources for food. In 1998, 3.8 million households were classified as food insecure with hunger, 1.6 million being households with children. About 6.5 million adults (3.3 percent) and 3.4 million children (4.9 percent) lived in food insecure households with hunger.

TABLE 3.1 PREVALENCE OF FOOD SECURITY, INSECURITY AND HUNGER, 1998 and 1999

| | Total | | Food Secure | | Food Insecure | | | | | |
|--|---------|---------|-------------|------------|---------------|-----------------------|------|--------------------|-----|--|
| | 1,000 | 1,000 | % | <u>All</u> | | <u>Without Hunger</u> | | <u>With Hunger</u> | | |
| | 1,000 | 1,000 | % | 1,000 | % | 1,000 | % | 1,000 | % | |
| All Households | | | | | | | | | | |
| 1998 | 103,309 | 91,121 | 88.2 | 12,188 | 11.8 | 8,353 | 8.1 | 3,835 | 3.7 | |
| 1999 | 104,684 | 94,154 | 89.9 | 10,529 | 10.1 | 7,420 | 7.1 | 3,109 | 3.0 | |
| Adults, By the Food Security Status of the Households | | | | | | | | | | |
| 1998 | 197,084 | 174,964 | 88.8 | 22,120 | 11.2 | 15,632 | 7.9 | 6,488 | 3.3 | |
| 1999 | 198,901 | 179,960 | 90.5 | 18,941 | 9.5 | 13,869 | 7.0 | 5,072 | 2.5 | |
| Children, By the Food Security Status of the Households | | | | | | | | | | |
| 1998 | 71,282, | 57,225 | 80.2 | 14,027 | 19.9 | 10,658 | 15.0 | 3,369 | 4.9 | |
| 1999 | 71,417 | 59,342 | 83.1 | 12,074 | 17.0 | 9,368 | 13.1 | 2,707 | 3.9 | |

Source: Tabulations of Current Population Survey, Food Security Supplement data.

Prevalence of Food Security among Subgroups of the U.S. Population

While the food security prevalence rates were near the national average for many subgroups in the U.S., some groups experienced notably higher rates of food insecurity and hunger (Table 3.2 and Exhibit 3.1).

Table 3.2: Prevalence of Food Insecurity and Hunger Among Selected Subgroups with Rates Above the National Average, 1998

| Population Subgroup | Food Insecurity | Hunger |
|--|------------------------|---------------|
| Single-woman headed households with children | 35.4% | 10.6% |
| Black Households | 24.3% | 8.5% |
| Hispanic Households | 25% | 6.8% |
| Households below poverty | 38% | 13.6% |

In 1998, households with children registered food insecurity at approximately twice the rate of households without children. Households living in central cities were more likely to experience food insecurity than households living in metropolitan areas outside the central city or in rural areas; 16.4% of households in central cities registered food insecurity compared to 9.3% of households in other metropolitan areas and 11.8% of households in rural areas. For several other subgroups, food insecurity and hunger were substantially lower than the national average rate (Table 3.3).

B. Prevalence of Food Security, 1999

1. Relevant Detailed Tables

Tables A.3 and A.4 in chapter 4 present details on national prevalence of food security in 1999. Table A.3 presents statistics on household food security status, while table A.4 presents statistics on the number of adults by the food security status of the household. Statistics in both tables are based on data as collected. That is, they have not been adjusted to be comparable to 1995-1997. Standard errors for these statistics are reported in tables D.A.3 and D.A.4. Tables C.3 and C.4 in Chapter 4 present similar

Exhibit 3.1
Prevalence of Food Insecurity for All Households and Selected Subgroups, 1998-1999

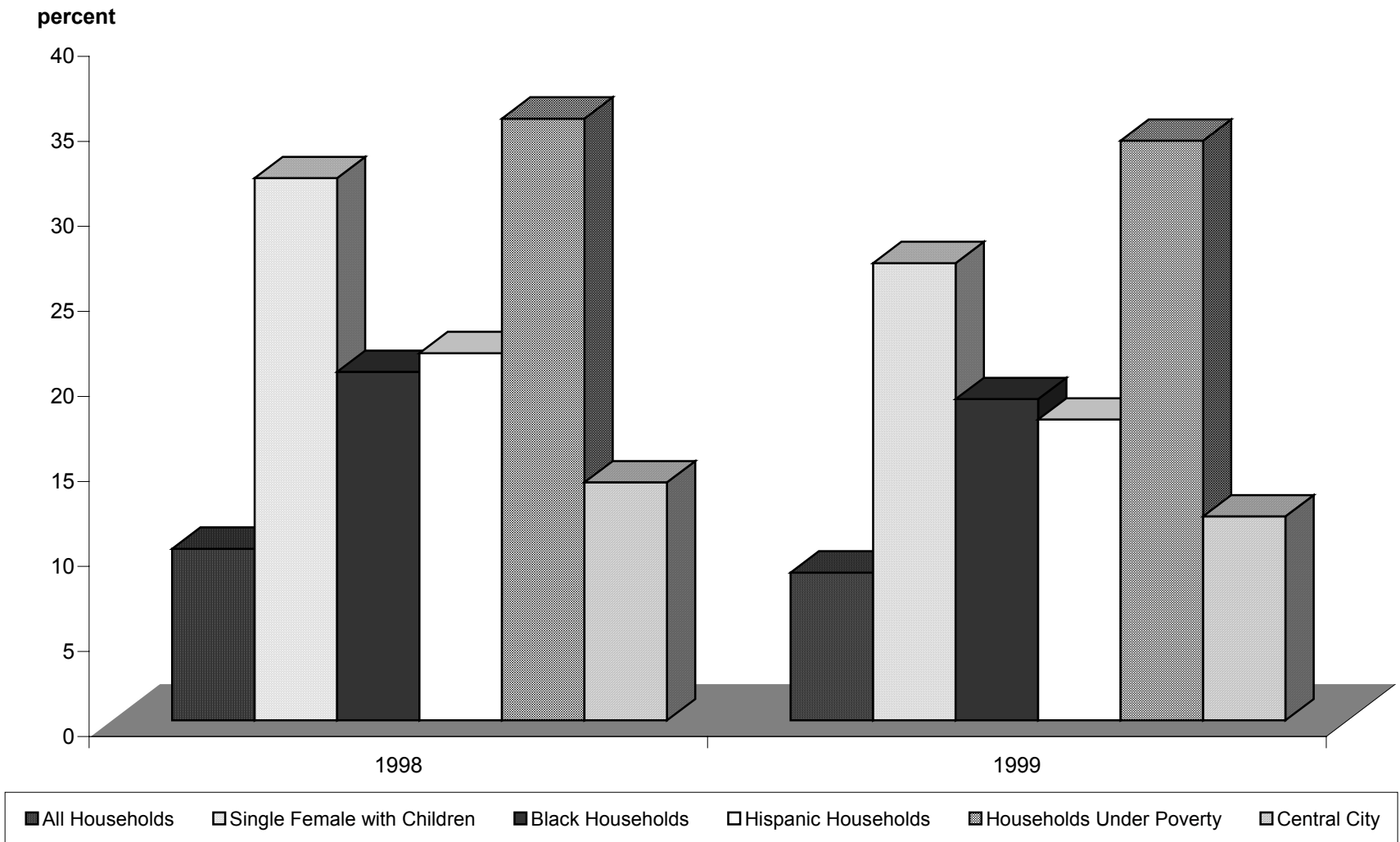


Table 3.3: Prevalence of Food Insecurity and Hunger Among Selected Subgroups with Rates Below the National Average, 1998

| Population Subgroup | Food Insecurity | Hunger |
|---|------------------------|---------------|
| All Households | 11.8% | 3.7% |
| Households with 2 adults and no children | 6.3% | 1.4% |
| Households in which elderly people live alone* | 6.3% | 2.1% |
| Households which include elderly people* | 6.4% | 1.9% |
| Households with income at or above 185% of the poverty line | 5.2% | 1.4 % |
| White, Non-Hispanic households | 8.2% | 2.6% |

* *Elderly is defined as people 65 and older.*

information but have been adjusted to be comparable to 1995-1997. The standard errors for these tables are reported in tables D.C.3 and D.C.4. Each table presents statistics for various subgroups of the population categorized by household composition, race and Hispanic ethnicity, household income-to-poverty ratio, area of residence and census geographic region.

2. Overview

Prevalence of Food Security Among All Households

In 1999, 94 million U.S. households (89.9 percent of all households) were as food secure throughout the entire year (Table 3.1). Living in these food secure households were 180 million adults (90.5 percent of all adults) and 59 million children (83 percent of all children).

Food insecurity was registered by 10.5 million U.S. households (10.1 percent of all households), in 1999 again with slightly more than half being households with

children (5.6 million households). Living in these food insecure households were 18.9 million adults and 12.1 million children. In 1999, 3.1 million households were food insecure with hunger, with 1.3 million being households with children. Households classified as food insecure with hunger included 5.1 million adults and 2.7 million children.

Prevalence of Food Security among Subgroups of the U.S. Population

As in 1998, some subgroups in the U.S. experienced notably higher than average rates of food insecurity and food insecurity with hunger (Exhibit 3.1 and Table 3.4).

Table 3.4: Prevalence of Food Insecurity and Hunger Among Selected Subgroups with Rates Above the National Average, 1999

| Population Subgroup | Food Insecurity | Hunger |
|--|------------------------|---------------|
| Single-woman headed households with children | 29.7% | 8.1% |
| Black Households | 21.3% | 6.5% |
| Hispanic Households | 20.8% | 5.5% |
| Household below poverty | 36.6% | 12.2% |

As in 1998, households with children registered food insecurity at approximately twice the rate of households without children. Households living in central cities were more likely to experience food insecurity than households living in metropolitan areas outside the central city or in rural areas. Households in central cities registered food insecurity at a rate of 13.9%, compared to households in other metropolitan areas (7.7%) and households in rural areas (10.1%).

For several other subgroups, food insecurity and hunger were substantially lower than the national average rate (Table 3.5):

Table 3.5: Prevalence of Food Insecurity and Hunger Among Selected Subgroups with Rates Below the National Average, 1999

| Population Subgroup | Food Insecurity | Hunger |
|---|------------------------|---------------|
| All Households | 10.1% | 3.0% |
| Households with 2 adults and no children | 5.5% | 1.0% |
| Households in which elderly people live alone * | 6.3% | 2.1% |
| Households which include elderly people * | 5.9% | 1.6% |
| Households with income at or above 185% of the poverty line | 4.1% | 1.0 % |
| White, Non-Hispanic households | 7% | 2.1% |

* *Elderly is defined as people 65 and older.*

C. Prevalence of Conditions, Experiences and Behaviors Represented by the Items in the Food Security Scale (1998 and 1999)

1. Relevant Detailed Tables

As described in chapter 1, the items included in the food security scale vary with respect to the severity of the conditional experience, or behavior they describe. One result and evidence of this variation across a range of severity is seen in the proportion of households that affirm the various items (see tables A.5 – A.8 in Chapter 4 for detailed statistics and tables D.A.5-D.A.8 for the respective standard errors).

2. Overview

In 1998, 16.6 percent of all households reported worrying that food would run out before they got money to buy more. Less than one percent responded that adults in the household did not eat for a whole day in three or more months. Similarly in 1999, these two questions were affirmed by 14.7 and 0.7 percent of households respectively.

Items referring specifically to behaviors and experiences of children represent more severe household food insecurity than corresponding items asked about adults or about anyone in the household (Table A.6). In 1998, 13.9 percent of households with children reported that they couldn't afford to eat balanced meals, but only 9.6 percent reported that they couldn't feed their children balanced meals. Similarly, 3.2 percent of adult respondents in households with children reported that they had been hungry but didn't eat because they couldn't afford more food, compared to 1.2 percent who reported the same experience for children. In 1.4 percent of households, adults went a whole day without eating because there was not enough money for food, while this rarely occurred for children (0.1 percent).

D. Prevalence of Food Insecurity and Hunger among Households with Children, 1998

1. Relevant Detailed Tables

Tables B.1 and B.2 in chapter 4 present details on food security and hunger among households with children in 1998. Table B.1 presents statistics on household food security status, while table B.2 presents statistics on the number of children in households with food insecurity and hunger. Statistics in both tables are based on data as collected. That is, they have not been adjusted to be comparable to 1995-1997. The tables describe food insecurity and hunger using the categories described in Chapter 2: food insecure (all), food insecure without hunger, food insecure with hunger among adults but not children, and food insecure with hunger among adults and children. Each table presents statistics for various subgroups of the population, categorized by household composition, race and Hispanic ethnicity, household income-to-poverty ratio, area of residence and census geographic region. Standard errors are presented in tables D.B.1 and D.B.2. It is important to remember that the statistics presented on the number of children in households with hunger among children do not represent the total number of children in the United States who experienced hunger, but instead represent the number of children living in households in which one or more children were hungry. This reflects the fact that the questions asked of a respondent are worded to ask whether *any* child or children in the household experience specific food insecurity/hunger indicators, but not *which* children or *how many* of the children.

2. Overview

Prevalence of Food Insecurity and Hunger Among Households with Children, 1998

In 1998, 1.3 million households with children present were food insecure with hunger among adults but not children (Table 3.6). Approximately 331,000 households were food insecure with hunger among both adults and children. Approximately 716,000 children lived in these most severely food insecure households. Not all of these children experienced hunger, but either they or another child in the household did.

Food Insecurity and Hunger Among Subpopulations of Households with Children

In 1998, the groups experiencing notably higher rates of food insecurity and hunger among all households also registered higher rates among households with children (Table 3.7 and Exhibit 3.2).

Table 3.7: Prevalence of Food Insecurity and Hunger in Households with Children for Selected Subgroups with Rates Above the National Average, 1998

| Population Subgroup | Food Insecurity (with or without hunger) | Hunger Among Adults but Not Children | Hunger Among Adults and Children |
|--|---|---|---|
| Single-woman headed households with children | 35.4% | 8.4% | 2.2% |
| Black Households | 30.9% | 6.7% | 1.7% |
| Hispanic Households | 30.8% | 5.4% | 1.6% |
| Household below poverty | 46.8% | 11.0% | 3.0% |

TABLE 3.6 PREVALENCE OF FOOD SECURITY, INSECURITY AND HUNGER AMONG HOUSEHOLDS WITH CHILDREN, 1998 and 1999

| | Total | | Food Secure | | Food Insecure | | | | |
|--|--------|--------|-------------|----------------|---------------|---|-----|---------------------------------------|-----|
| | 1,000 | 1,000 | % | Without Hunger | | With Hunger Among Adults but Not Children | | With Hunger Among Adults and Children | |
| | | | | 1,000 | % | 1,000 | % | 1,000 | % |
| All Households with Children | | | | | | | | | |
| 1998 | 38,036 | 31,335 | 82.3 | 5,049 | 13.3 | 1,321 | 3.5 | 331 | 0.9 |
| 1999 | 37,885 | 32,291 | 85.2 | 4,340 | 11.5 | 1,035 | 2.7 | 219 | 0.6 |
| Children, By the Food Security Status of the Households | | | | | | | | | |
| 1998 | 71,282 | 57,225 | 80.2 | 10,658 | 15.0 | 2,653 | 3.9 | 716 | 1.0 |
| 1999 | 71,417 | 59,342 | 83.1 | 9,368 | 13.1 | 2,197 | 3.2 | 511 | 0.7 |

Source: Tabulations of Current Population Survey, Food Security Supplement data.

In 1998, households with children living in central cities were more likely to experience food insecurity than households with children living elsewhere. Almost one-fourth (24.5%) of households with children in central cities experienced food insecurity compared to 13.7% in other metropolitan areas and 19.0% in rural areas. Food insecurity among households with children was lower than the national average rate for households with income above 185% of the poverty line (7.1%) and White, Non-Hispanic households (12.4%).

E. Prevalence of Food Insecurity and Hunger Among Households with Children, 1999

1. Relevant Detailed Tables

Tables B.3 and B.4 in chapter 4 present details on food security and hunger among households with children in 1999. Table B.3 presents statistics on household food security status, while table B.4 presents statistics on the number of children in households with food insecurity and hunger. Statistics in both tables are based on data as collected. That is, they have not been adjusted to be comparable to 1995-1997. Standard errors are presented in tables D.B.3 and D.B.4.

2. Overview

Food Insecurity and Hunger Among All Households with Children

In 1999, about 1 million households with children were classified as food insecure with hunger among adults but not children and 219,000 households were food insecure with hunger among both adults and children. About 511,000 children lived in these 219,000 households.

Food Insecurity and Hunger Among Subpopulations of Households with Children

As in 1998, the groups experiencing notably higher rates of food insecurity and food insecurity with hunger among all households in 1999 also registered higher rates among households with children (Exhibit 3.2 and Table 3.8).

Table 3.8: Prevalence of Food Insecurity and Hunger in Households with Children for Selected Subgroups with Rates Above the National Average, 1999

| Population Subgroup | Food Insecurity (with or without hunger) | Hunger Among Adults but Not Children | Hunger Among Adults and Children |
|--|---|---|---|
| Single-woman headed households with children | 29.7% | 6.7% | 1.4% |
| Black Households | 26.1% | 5.0% | 1.0% |
| Hispanic Households | 29.7% | 5.1% | 1.0% |
| Household below poverty | 42.9% | 9.2% | 1.9% |

In 1999, households with children living in central cities were more likely to experience food insecurity than households with children living elsewhere. Households with children in central cities experienced food insecurity at a rate of 21%, compared to 11.5% in other metropolitan areas and 15.1% in rural areas.

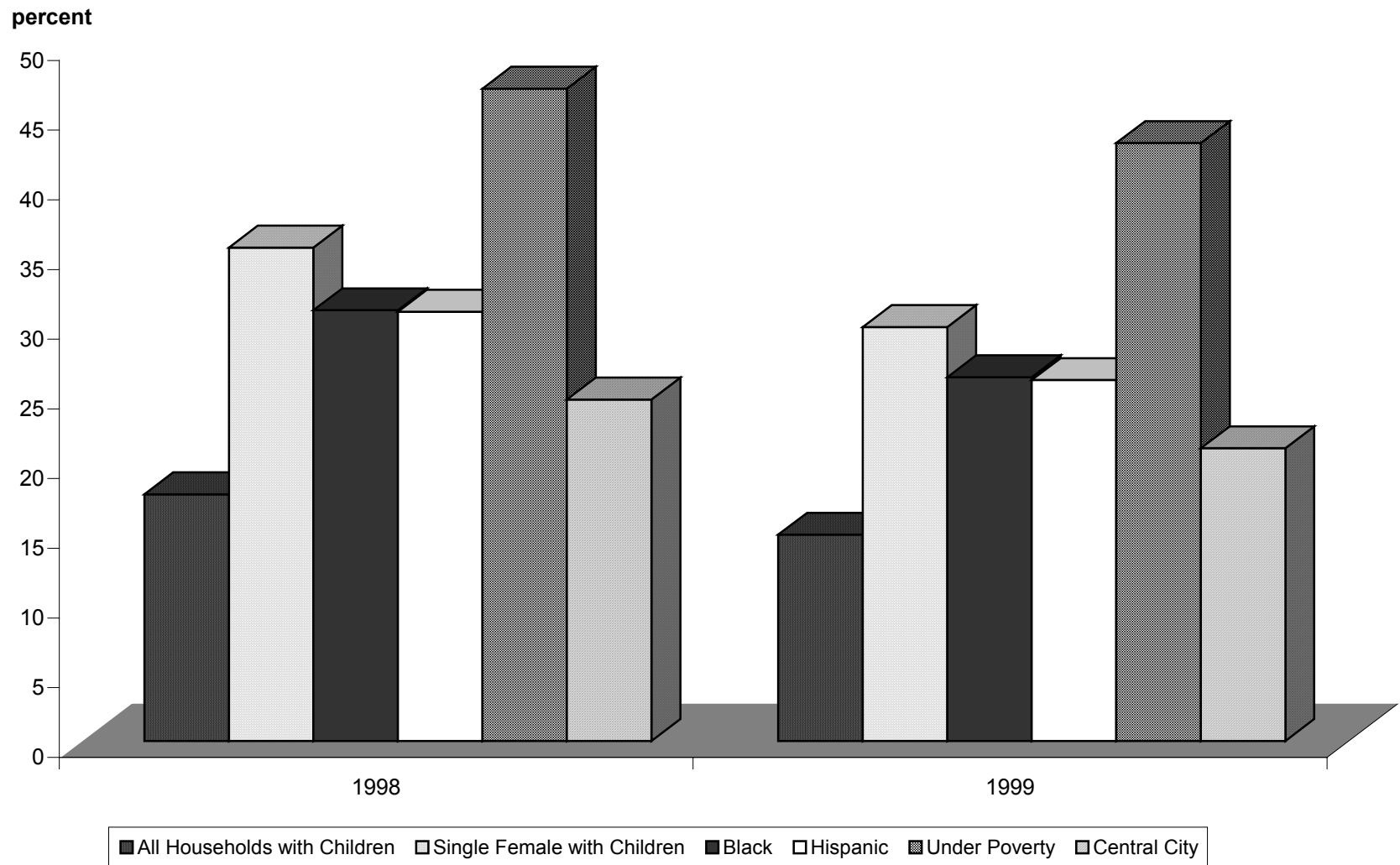
Food insecurity was lower than the national average rate among households with income above 185% of the poverty line (5.6%) and White, Non-Hispanic households (10.1%).

F. Prevalence of Food Insecurity with Hunger Among Households with Children, 1995-1997

1. Relevant Detailed Tables

Tables B.5 through B.10 in chapter 4 present details on hunger among children from 1995-1997. Tables B.5, B.6 and B.7 present statistics on the number of households with hunger among children for 1995, 1996 and 1997 respectively. Tables B.7, B.8 and B.9 present statistics on the numbers of children in those households for the same years. Statistics in both sets of tables are based on the children's hunger scale described in Chapter 2 and are based on data as collected. Prevalence rates of this most severe measured range of food insecurity are negligibly affected by screening differences across years. Thus, these statistics can be compared directly to those for 1998 and 1999 without

Exhibit 3.2
Prevalence of Food Insecurity Among All Households With Children and Selected Subgroups,
1998 and 1999



adjusting for differences in screening. Standard errors are presented in tables D.B.5-7 and D.B.8-10.

Prevalence of household-level food insecurity and of hunger were reported for these years in *Household Food Security in the United States, 1995-1998, Advance Report*. However, that report did not include statistics on the more severe category, hunger among adults and children.

2. Overview

In 1995, approximately one percent (415 thousand households) of all households with children were food insecure with hunger among children. Approximately 887,000 children lived in these most severely food insecure households. The prevalence rate was similar in 1996: one percent (379 thousand households) of all households with children were classified as food insecure with hunger among children. About 917,000 children lived in these households. In 1997, less than one percent (0.8 percent) of households with children (305 thousand households) were food insecure with hunger among children. This included 651,000 children. As described above in Section D, the corresponding statistics for 1998 and 1999 were 0.9 percent and 0.6 percent, including 716,000 and 511,000 children respectively.

G. Changes in Prevalence of Food Insecurity and Hunger Between 1995 and 1999

1. Relevant Detailed Tables

To understand how household food security and insecurity prevalence rates have changed since the scale was first developed in 1995, selected prevalence rates in 1998 and 1999 are compared to prevalence rates in earlier years. Because of possible seasonal fluctuations (see next section) we limit the detailed cross-year comparisons to two-year and four year periods. Comparing to two years prior avoids bias due to any seasonal fluctuations, since data were collected in spring and fall in alternating years. Tables C.5-C.10 in Chapter 4 present the changes in prevalence rates for all households and groups of households for each of these time intervals. To ensure comparability, statistics in the

tables are based on data that have been adjusted for differences in screening procedures across years.

2. *Overview*

Overall the proportion of households registering food insecurity and hunger declined from 1995-1999 (Exhibit 3.3). However, the declines were not consistent across the years. In fact, food insecurity increased by 1.4 percentage points between 1997 and 1998. This increase was offset by a decline of 1.4 percentage point between 1998 and 1999. Overall, there was a statistically significant (with 90% confidence) decrease of 1.6 percentage points between 1995 and 1999. It is likely that the deviation from a smooth downward trend across years reflects in part a seasonal component. Food security data collection occurred in April in 1995, 1997, and 1999 but occurred in September in 1996 and in August in 1998. The effect of survey season is explored in greater detail in *Household Food Security in the United States, 1998 and 1999: Technical Report* (Cohen, et. al., 2002).

Exhibit 3.4 presents trends in food insecurity for subpopulations of households. The subpopulation groups included in this exhibit registered higher rates of food insecurity than the national average. Prevalence of food insecurity for most of the groups followed a trend similar to that of all households, with somewhat larger year-to-year changes. The exception was low-income households. There were fewer low-income households in 1999 than in 1995 but the prevalence rate of food insecurity among them was the same or possibly somewhat higher in 1999 than in 1995. This is consistent with the assumption of a strong causal linkage between low income and food insecurity.

Between 1995 and 1999, for all households with children, the prevalence of food insecurity with hunger among children declined 0.5 percentage points (statistically significant at a 90% confidence level; Exhibit 3.5). Trends for selected subpopulations of households with children--the subgroups with higher food insecurity rates – are also presented in Exhibit 3.5. Most of the subpopulations registered statistically significant

declines in hunger rates from 1995 to 1999 ranging from 0.9 to 1.2 percentage points, with greater year-to-year fluctuations than those of all households as a group.

Exhibit 3.3
Prevalence of Household Food Insecurity and Hunger, 1995-1999

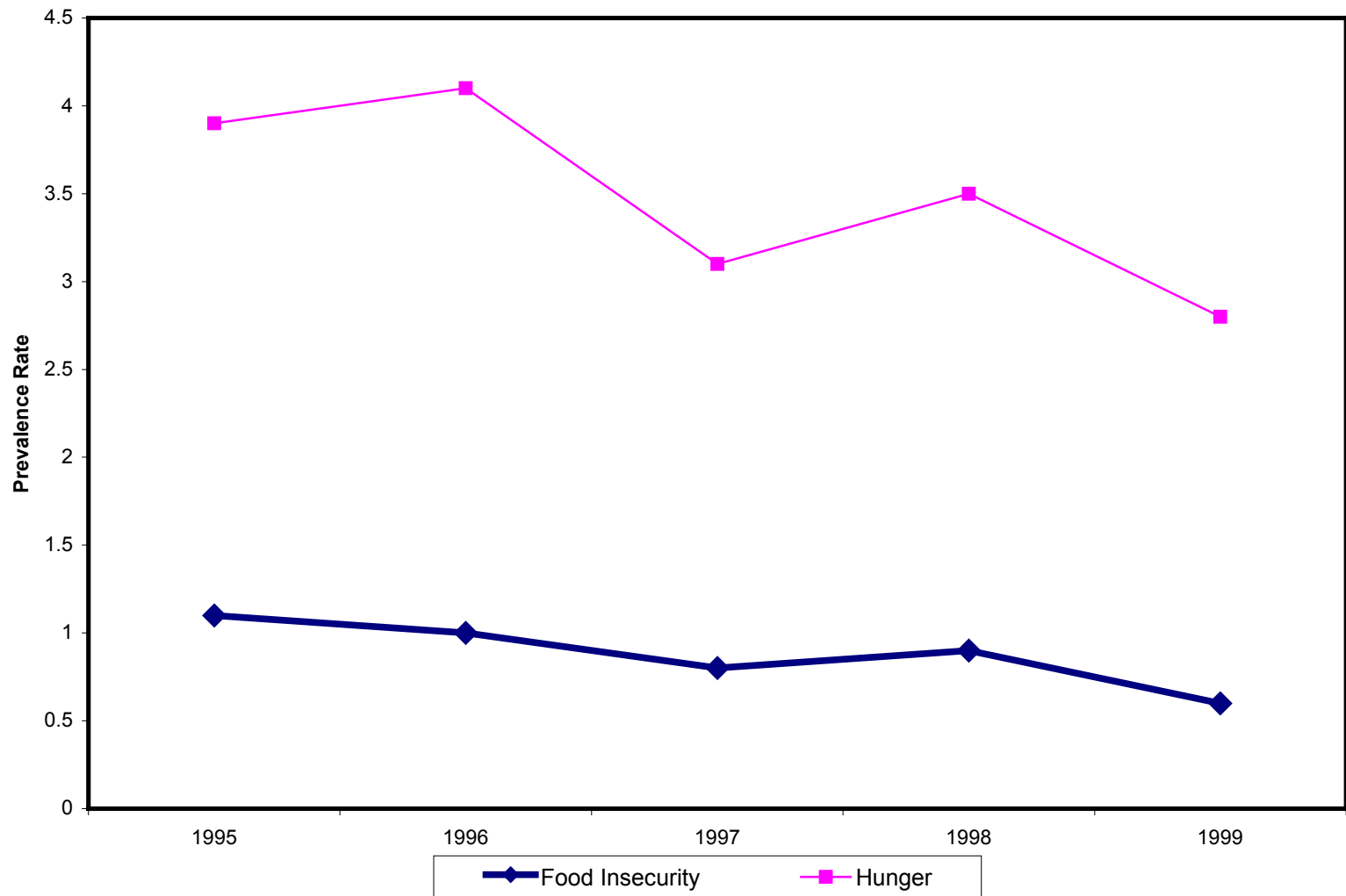


Exhibit 3.4
Prevalence of Household Food Insecurity, All Households and Selected Subpopulations,
1995-1999

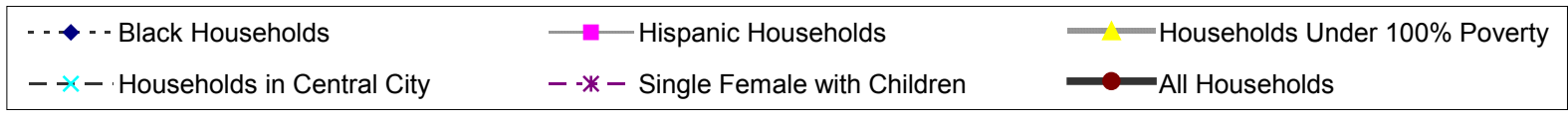
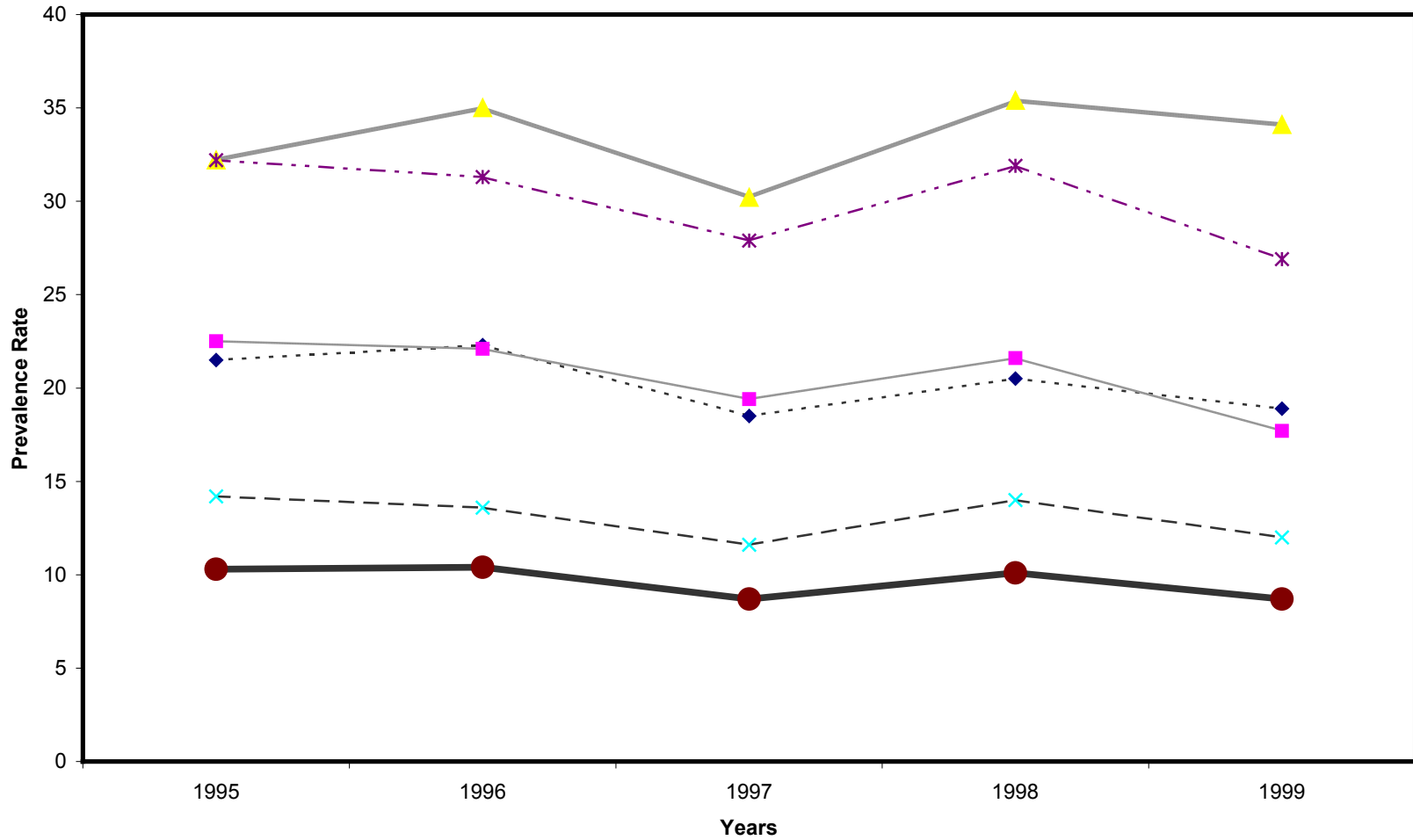
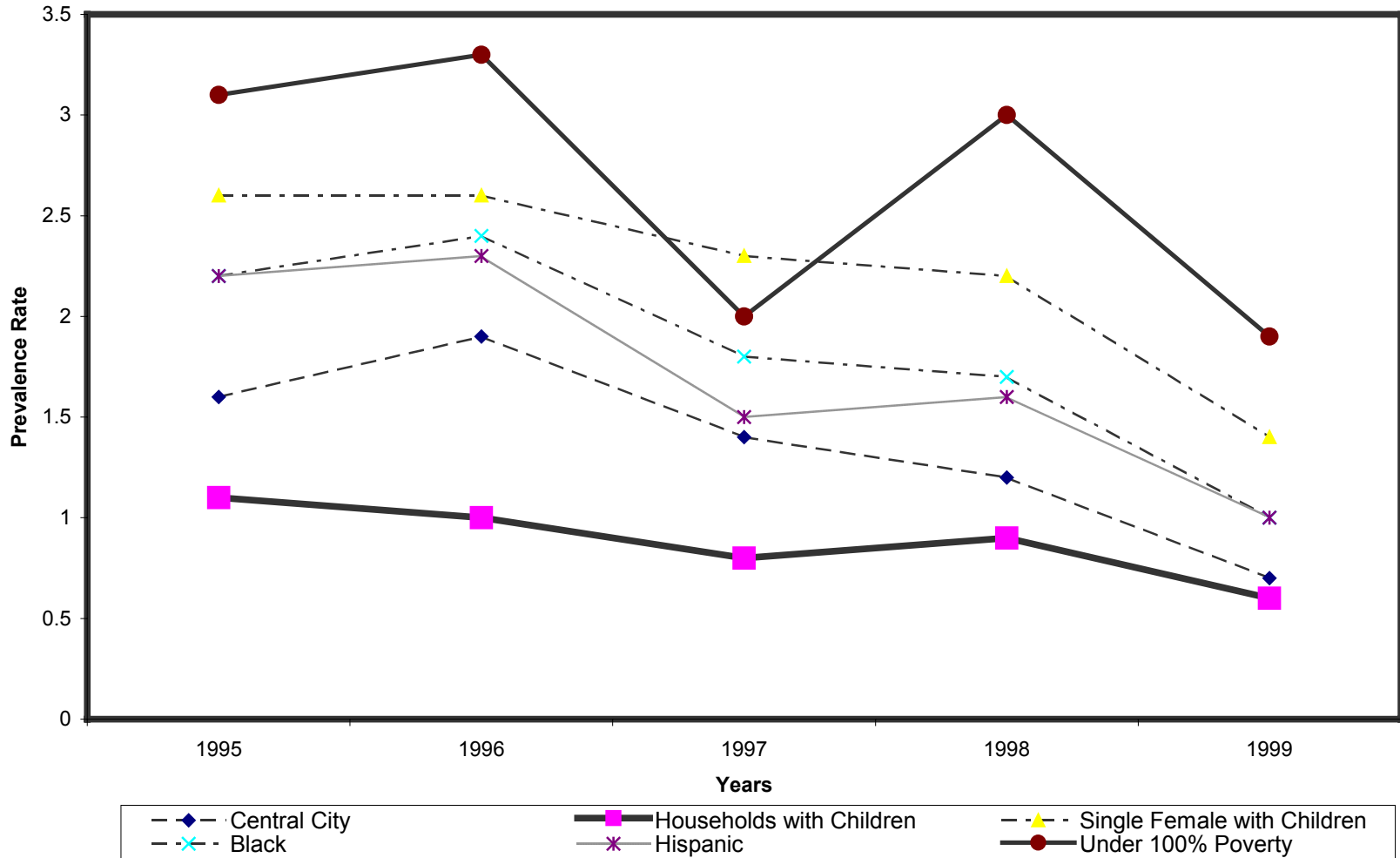


Exhibit 3.5
Prevalence of Food Insecurity with Hunger Among Children,
All Households with Children and Subpopulations, 1995-1999



4. PREVALENCE OF FOOD SECURITY, DETAILED TABLES

This chapter presents the detailed statistical tables summarized in the preceding chapter. Tables in Section A describe the prevalence rates of food security, food insecurity and hunger among all households and for selected subpopulations. Section B focuses on the prevalence of food insecurity and hunger among households with children. Estimates of change in household prevalence of food insecurity and hunger are presented in Section C and standard errors for all prevalence rates are presented in Section D.

A: Prevalence of Food Security Among All Households

TABLE A.1
Household Food Security Status by Selected Household Characteristics, 1998.¹

| CHARACTERISTIC | TOTAL | FOOD SECURE | | | FOOD INSECURE | | | | | |
|--|---------|-------------|-------|--------|---------------|-------|----------------|-------|-------------|---|
| | | 1,000 | 1,000 | % | All | | Without Hunger | | With Hunger | |
| | | | | | 1,000 | % | 1,000 | % | 1,000 | % |
| All Households | 103,309 | 91,121 | 88.2 | 12,188 | 11.8 | 8,353 | 8.1 | 3,835 | 3.7 | |
| Household Composition | | | | | | | | | | |
| With Children < 6 | 17,087 | 13,882 | 81.2 | 3,205 | 18.8 | 2,529 | 14.8 | 676 | 4.0 | |
| With Children < 18 | 38,036 | 31,335 | 82.4 | 6,701 | 17.6 | 5,049 | 13.3 | 1,652 | 4.3 | |
| Married Couple Families | 26,306 | 23,284 | 88.5 | 3,022 | 11.5 | 2,468 | 9.4 | 554 | 2.1 | |
| Female Head, No Spouse | 8,807 | 5,692 | 64.6 | 3,115 | 35.4 | 2,183 | 24.8 | 932 | 10.6 | |
| Male Head, No Spouse | 2,153 | 1,727 | 80.2 | 426 | 19.8 | 308 | 14.3 | 118 | 5.5 | |
| Other Households with Child ^e | 770 | 632 | 82.1 | 138 | 17.9 | 89 | 11.6 | 49 | 6.3 | |
| With No Children < 18 | 65,273 | 59,786 | 91.6 | 5,487 | 8.4 | 3,303 | 5.1 | 2,183 | 3.3 | |
| More Than One Adult | 38,563 | 36,107 | 93.6 | 2,456 | 6.4 | 1,560 | 4.0 | 896 | 2.3 | |
| Women Living Alone | 15,502 | 13,848 | 89.3 | 1,654 | 10.7 | 988 | 6.4 | 666 | 4.3 | |
| Men Living Alone | 11,207 | 9,830 | 87.7 | 1,377 | 12.3 | 756 | 6.7 | 621 | 5.5 | |
| Households With Elderly | 24,309 | 22,741 | 93.5 | 1,568 | 6.5 | 1,105 | 4.5 | 463 | 1.9 | |
| Elderly Living Alone | 10,006 | 9,374 | 93.7 | 632 | 6.3 | 421 | 4.2 | 211 | 2.1 | |
| Race and Hispanic Ethnicity | | | | | | | | | | |
| White, Non-Hispanic | 78,238 | 71,775 | 91.7 | 6,462 | 8.3 | 4,414 | 5.6 | 2,049 | 2.6 | |
| Black, Non-Hispanic | 12,471 | 9,443 | 75.7 | 3,028 | 24.3 | 1,971 | 15.8 | 1,058 | 8.5 | |
| Hispanic ^f | 8,678 | 6,509 | 75.0 | 2,169 | 25.0 | 1,583 | 18.2 | 586 | 6.8 | |
| Other Non-Hispanic | 3,922 | 3,394 | 86.5 | 528 | 13.5 | 385 | 9.8 | 143 | 3.6 | |
| Household Income-to-Poverty Ratio | | | | | | | | | | |
| Under 1.00 | 12,270 | 7,596 | 61.9 | 4,673 | 38.1 | 2,999 | 24.4 | 1,674 | 13.6 | |
| Under 1.30 | 17,804 | 11,697 | 65.7 | 6,107 | 34.3 | 3,988 | 22.4 | 2,119 | 11.9 | |
| Under 1.85 | 28,833 | 20,758 | 72.0 | 8,075 | 28.0 | 5,406 | 18.7 | 2,669 | 9.3 | |
| 1.85 and Over | 62,223 | 59,024 | 94.9 | 3,199 | 5.1 | 2,352 | 3.8 | 847 | 1.4 | |
| Income Unknown | 12,253 | 11,339 | 92.5 | 914 | 7.5 | 595 | 4.9 | 319 | 2.6 | |
| Area of Residence^g | | | | | | | | | | |
| Inside Metropolitan Area | 83,064 | 73,278 | 88.2 | 9,785 | 11.8 | 6,647 | 8.0 | 3,138 | 3.8 | |
| In Central City | 26,559 | 22,205 | 83.6 | 4,354 | 16.4 | 2,825 | 10.6 | 1,530 | 5.8 | |
| Not In Central City | 42,217 | 38,311 | 90.7 | 3,905 | 9.3 | 2,770 | 6.6 | 1,135 | 2.7 | |
| Outside Metropolitan Area | 20,245 | 17,843 | 88.1 | 2,402 | 11.9 | 1,705 | 8.4 | 697 | 3.4 | |
| Census Geographic Region | | | | | | | | | | |
| Northeast | 19,576 | 17,501 | 89.4 | 2,075 | 10.6 | 1,419 | 7.2 | 657 | 3.4 | |
| Midwest | 24,227 | 21,980 | 90.7 | 2,247 | 9.3 | 1,572 | 6.5 | 675 | 2.8 | |
| South | 37,322 | 32,561 | 87.2 | 4,760 | 12.8 | 3,233 | 8.7 | 1,528 | 4.1 | |
| West | 22,184 | 19,079 | 86.0 | 3,105 | 14.0 | 2,129 | 9.6 | 976 | 4.4 | |

Source: Tabulations of Current Population Survey, Food Security Supplement data
e,f,g,j--See End Notes

TABLE A.2
Number of Adults by Food Security Status of Household, by Selected Household Characteristics, 1998.^{a,j}

| CHARACTERISTIC | TOTAL | | FOOD SECURE | | | | FOOD INSECURE | | | |
|--|---------|--|-------------|------|--------|------|----------------|------|-------------|------|
| | | | | | All | | Without Hunger | | With Hunger | |
| | 1,000 | | 1,000 | % | 1,000 | % | 1,000 | % | 1,000 | % |
| Adults in All Households | 197,084 | | 174,964 | 88.8 | 22,120 | 11.2 | 15,632 | 7.9 | 6,488 | 3.3 |
| Household Composition | | | | | | | | | | |
| With Children < 6 | 35,957 | | 29,527 | 82.1 | 6,430 | 17.9 | 5,106 | 14.2 | 1,324 | 3.7 |
| With Children < 18 | 80,684 | | 67,549 | 83.7 | 13,135 | 16.3 | 10,121 | 12.5 | 3,015 | 3.7 |
| Married Couple Families | 61,386 | | 53,954 | 87.9 | 7,432 | 12.1 | 6,051 | 9.9 | 1,382 | 2.3 |
| Female Head, No Spouse | 13,711 | | 9,098 | 66.4 | 4,613 | 33.6 | 3,288 | 24.0 | 1,325 | 9.7 |
| Male Head, No Spouse | 3,931 | | 3,112 | 79.2 | 819 | 20.8 | 615 | 15.6 | 204 | 5.2 |
| Other Households with Child ^c | 1,656 | | 1,385 | 83.6 | 271 | 16.4 | 167 | 10.1 | 104 | 6.3 |
| With No Children < 18 | 116,400 | | 107,415 | 92.3 | 8,985 | 7.7 | 5,512 | 4.7 | 3,473 | 3.0 |
| More Than One Adult | 89,690 | | 83,736 | 93.4 | 5,954 | 6.6 | 3,768 | 4.2 | 2,186 | 2.4 |
| Women Living Alone | 15,502 | | 13,848 | 89.3 | 1,654 | 10.7 | 988 | 6.4 | 666 | 4.3 |
| Men Living Alone | 11,207 | | 9,830 | 87.7 | 1,377 | 12.3 | 756 | 6.7 | 621 | 5.5 |
| Households With Elderly | 43,924 | | 40,767 | 92.8 | 3,158 | 7.2 | 2,209 | 5.0 | 949 | 2.2 |
| Elderly Living Alone | 10,006 | | 9,374 | 93.7 | 632 | 6.3 | 421 | 4.2 | 211 | 2.1 |
| Race and Hispanic Ethnicity | | | | | | | | | | |
| White, Non-Hispanic | 147,070 | | 136,021 | 92.5 | 11,049 | 7.5 | 7,684 | 5.2 | 3,365 | 2.3 |
| Black, Non-Hispanic | 22,391 | | 17,125 | 76.5 | 5,267 | 23.5 | 3,535 | 15.8 | 1,731 | 7.7 |
| Hispanic ^f | 19,221 | | 14,468 | 75.3 | 4,753 | 24.7 | 3,613 | 18.8 | 1,141 | 5.9 |
| Other Non-Hispanic | 8,401 | | 7,350 | 87.5 | 1,051 | 12.5 | 800 | 9.5 | 251 | 3.0 |
| Household Income-to-Poverty Ratio | | | | | | | | | | |
| Under 1.00 | 21,340 | | 13,173 | 61.7 | 8,166 | 38.3 | 5,411 | 25.4 | 2,755 | 12.9 |
| Under 1.30 | 31,050 | | 20,305 | 65.4 | 10,744 | 34.6 | 7,267 | 23.4 | 3,477 | 11.2 |
| Under 1.85 | 51,520 | | 37,062 | 71.9 | 14,458 | 28.1 | 9,976 | 19.4 | 4,483 | 8.7 |
| 1.85 and Over | 122,215 | | 116,298 | 95.2 | 5,917 | 4.8 | 4,419 | 3.6 | 1,498 | 1.2 |
| Income Unknown | 23,348 | | 21,604 | 92.5 | 1,745 | 7.5 | 1,238 | 5.3 | 507 | 2.2 |
| Area of Residence^g | | | | | | | | | | |
| Inside Metropolitan Area | 159,108 | | 141,256 | 88.8 | 17,851 | 11.2 | 12,521 | 7.9 | 5,330 | 3.4 |
| In Central City | 48,569 | | 40,801 | 84.0 | 7,768 | 16.0 | 5,261 | 10.8 | 2,507 | 5.2 |
| Not In Central City | 83,527 | | 76,146 | 91.2 | 7,381 | 8.8 | 5,330 | 6.4 | 2,051 | 2.5 |
| Outside Metropolitan Area | 37,976 | | 33,708 | 88.8 | 4,269 | 11.2 | 3,111 | 8.2 | 1,157 | 3.0 |
| Census Geographic Region | | | | | | | | | | |
| Northeast | 38,145 | | 34,573 | 90.6 | 3,573 | 9.4 | 2,541 | 6.7 | 1,031 | 2.7 |
| Midwest | 45,912 | | 41,985 | 91.4 | 3,927 | 8.6 | 2,809 | 6.1 | 1,118 | 2.4 |
| South | 69,772 | | 61,065 | 87.5 | 8,707 | 12.5 | 6,053 | 8.7 | 2,655 | 3.8 |
| West | 43,254 | | 37,341 | 86.3 | 5,913 | 13.7 | 4,230 | 9.8 | 1,683 | 3.9 |

Source: Tabulations of Current Population Survey, Food Security Supplement data e,f,g,j--See End Notes

TABLE A.3
Household Food Security Status by Selected Household Characteristics, 1999.¹

| CHARACTERISTIC | TOTAL | FOOD SECURE | | FOOD INSECURE | | | | | |
|--|---------|-------------|------|---------------|------|----------------|------|-------------|------|
| | | 1,000 | % | All | | Without Hunger | | With Hunger | |
| | | | | 1,000 | % | 1,000 | % | 1,000 | % |
| All Households | 104,684 | 94,154 | 89.9 | 10,529 | 10.1 | 7,420 | 7.1 | 3,109 | 3.0 |
| Household Composition | | | | | | | | | |
| With Children < 6 | 17,231 | 14,439 | 83.8 | 2,792 | 16.2 | 2,265 | 13.1 | 527 | 3.1 |
| With Children < 18 | 37,884 | 32,290 | 85.2 | 5,594 | 14.8 | 4,340 | 11.5 | 1,254 | 3.3 |
| Married Couple Families | 26,303 | 23,771 | 90.4 | 2,532 | 9.6 | 2,105 | 8.0 | 428 | 1.6 |
| Female Head, No Spouse | 8,744 | 6,146 | 70.3 | 2,598 | 29.7 | 1,890 | 21.6 | 709 | 8.1 |
| Male Head, No Spouse | 2,187 | 1,817 | 83.1 | 370 | 16.9 | 280 | 12.8 | 89 | 4.1 |
| Other Households with Child ^c | 650 | 556 | 85.6 | 94 | 14.4 | 66 | 10.1 | 28 | 4.3 |
| With No Children < 18 | 66,800 | 61,865 | 92.6 | 4,935 | 7.4 | 3,080 | 4.6 | 1,855 | 2.8 |
| More Than One Adult | 39,567 | 37,380 | 94.5 | 2,188 | 5.5 | 1,470 | 3.7 | 718 | 1.8 |
| Women Living Alone | 16,046 | 14,473 | 90.2 | 1,573 | 9.8 | 908 | 5.7 | 665 | 4.1 |
| Men Living Alone | 11,187 | 10,013 | 89.5 | 1,174 | 10.5 | 701 | 6.3 | 473 | 4.2 |
| Households With Elderly | 24,704 | 23,265 | 94.2 | 1,439 | 5.8 | 1,055 | 4.3 | 385 | 1.6 |
| Elderly Living Alone | 10,049 | 9,413 | 93.7 | 636 | 6.3 | 423 | 4.2 | 214 | 2.1 |
| Race and Hispanic Ethnicity | | | | | | | | | |
| White, Non-Hispanic | 78,998 | 73,451 | 93.0 | 5,546 | 7.0 | 3,873 | 4.9 | 1,673 | 2.1 |
| Black, Non-Hispanic | 12,616 | 9,936 | 78.8 | 2,680 | 21.2 | 1,866 | 14.8 | 814 | 6.5 |
| Hispanic ^f | 9,192 | 7,285 | 79.2 | 1,907 | 20.8 | 1,406 | 15.3 | 502 | 5.5 |
| Other Non-Hispanic | 3,878 | 3,482 | 89.8 | 396 | 10.2 | 275 | 7.1 | 121 | 3.1 |
| Household Income-to-Poverty Ratio | | | | | | | | | |
| Under 1.00 | 11,319 | 7,169 | 63.3 | 4,150 | 36.7 | 2,767 | 24.4 | 1,383 | 12.2 |
| Under 1.30 | 17,432 | 11,799 | 67.7 | 5,633 | 32.3 | 3,767 | 21.6 | 1,866 | 10.7 |
| Under 1.85 | 27,261 | 20,145 | 73.9 | 7,116 | 26.1 | 4,907 | 18.0 | 2,210 | 8.1 |
| 1.85 and Over | 63,909 | 61,299 | 95.9 | 2,610 | 4.1 | 1,969 | 3.1 | 641 | 1.0 |
| Income Unknown | 13,513 | 12,710 | 94.1 | 803 | 5.9 | 545 | 4.0 | 258 | 1.9 |
| Area of Residence^g | | | | | | | | | |
| Inside Metropolitan Area | 84,304 | 75,844 | 90.0 | 8,461 | 10.0 | 5,903 | 7.0 | 2,558 | 3.0 |
| In Central City | 26,718 | 23,027 | 86.2 | 3,691 | 13.8 | 2,578 | 9.7 | 1,113 | 4.2 |
| Not In Central City | 43,103 | 39,793 | 92.3 | 3,310 | 7.7 | 2,290 | 5.3 | 1,020 | 2.4 |
| Outside Metropolitan Area | 20,379 | 18,311 | 89.8 | 2,069 | 10.2 | 1,517 | 7.4 | 552 | 2.7 |
| Census Geographic Region | | | | | | | | | |
| Northeast | 19,960 | 18,301 | 91.7 | 1,659 | 8.3 | 1,147 | 5.7 | 512 | 2.6 |
| Midwest | 24,592 | 22,554 | 91.7 | 2,038 | 8.3 | 1,514 | 6.2 | 524 | 2.1 |
| South | 37,598 | 33,431 | 88.9 | 4,166 | 11.1 | 2,945 | 7.8 | 1,221 | 3.2 |
| West | 22,533 | 19,868 | 88.2 | 2,665 | 11.8 | 1,813 | 8.0 | 852 | 3.8 |

Source: Tabulations of Current Population Survey, Food Security Supplement data e,f,g,j--See End Notes

TABLE A.4
Number of Adults by Food Security Status of Household, by Selected Household Characteristics, 1999. ^j

| CHARACTERISTIC | TOTAL | FOOD SECURE | | | FOOD INSECURE | | | | | |
|--|---------|-------------|-------|--------|---------------|--------|----------------|-------|-------------|---|
| | | 1,000 | 1,000 | % | All | | Without Hunger | | With Hunger | |
| | | | | | 1,000 | % | 1,000 | % | 1,000 | % |
| Adults in All Households | 198,901 | 179,960 | 90.5 | 18,941 | 9.5 | 13,869 | 7.0 | 5,072 | 2.5 | |
| Household Composition | | | | | | | | | | |
| With Children < 6 | 35,925 | 30,417 | 84.7 | 5,508 | 15.3 | 4,486 | 12.5 | 1,022 | 2.8 | |
| With Children < 18 | 80,242 | 69,273 | 86.3 | 10,969 | 13.7 | 8,660 | 10.8 | 2,310 | 2.9 | |
| Married Couple Families | 61,162 | 55,057 | 90.0 | 6,105 | 10.0 | 5,053 | 8.3 | 1,051 | 1.7 | |
| Female Head, No Spouse | 13,620 | 9,707 | 71.3 | 3,913 | 28.7 | 2,910 | 21.4 | 1,002 | 7.4 | |
| Male Head, No Spouse | 4,040 | 3,304 | 81.8 | 737 | 18.2 | 559 | 13.8 | 178 | 4.4 | |
| Other Households with Child ^e | 1,420 | 1,205 | 84.9 | 215 | 15.1 | 137 | 9.6 | 78 | 5.5 | |
| With No Children < 18 | 118,658 | 110,687 | 93.3 | 7,972 | 6.7 | 5,209 | 4.4 | 2,762 | 2.3 | |
| More Than One Adult | 91,426 | 86,202 | 94.3 | 5,224 | 5.7 | 3,600 | 3.9 | 1,624 | 1.8 | |
| Women Living Alone | 16,046 | 14,473 | 90.2 | 1,573 | 9.8 | 908 | 5.7 | 665 | 4.1 | |
| Men Living Alone | 11,187 | 10,013 | 89.5 | 1,174 | 10.5 | 701 | 6.3 | 473 | 4.2 | |
| Households With Elderly | 44,082 | 41,354 | 93.8 | 2,728 | 6.2 | 2,117 | 4.8 | 611 | 1.4 | |
| Elderly Living Alone | 10,049 | 9,413 | 93.7 | 636 | 6.3 | 423 | 4.2 | 214 | 2.1 | |
| Race and Hispanic Ethnicity | | | | | | | | | | |
| White, Non-Hispanic | 147,789 | 138,306 | 93.6 | 9,483 | 6.4 | 6,887 | 4.7 | 2,597 | 1.8 | |
| Black, Non-Hispanic | 22,935 | 18,325 | 79.9 | 4,610 | 20.1 | 3,354 | 14.6 | 1,257 | 5.5 | |
| Hispanic ^f | 20,024 | 15,885 | 79.3 | 4,139 | 20.7 | 3,117 | 15.6 | 1,021 | 5.1 | |
| Other Non-Hispanic | 8,152 | 7,444 | 91.3 | 708 | 8.7 | 512 | 6.3 | 197 | 2.4 | |
| Household Income-to-Poverty Ratio | | | | | | | | | | |
| Under 1.00 | 19,233 | 12,238 | 63.6 | 6,995 | 36.4 | 4,849 | 25.2 | 2,146 | 11.2 | |
| Under 1.30 | 29,684 | 20,073 | 67.6 | 9,611 | 32.4 | 6,686 | 22.5 | 2,925 | 9.9 | |
| Under 1.85 | 48,335 | 35,729 | 73.9 | 12,606 | 26.1 | 9,036 | 18.7 | 3,570 | 7.4 | |
| 1.85 and Over | 124,708 | 119,882 | 96.1 | 4,827 | 3.9 | 3,737 | 3.0 | 1,089 | 0.9 | |
| Income Unknown | 25,857 | 24,350 | 94.2 | 1,508 | 5.8 | 1,095 | 4.2 | 412 | 1.6 | |
| Area of Residence^g | | | | | | | | | | |
| Inside Metropolitan Area | 160,816 | 145,526 | 90.5 | 15,290 | 9.5 | 11,063 | 6.9 | 4,227 | 2.6 | |
| In Central City | 48,632 | 42,045 | 86.5 | 6,586 | 13.5 | 4,757 | 9.8 | 1,829 | 3.8 | |
| Not In Central City | 84,934 | 78,862 | 92.9 | 6,072 | 7.1 | 4,340 | 5.1 | 1,731 | 2.0 | |
| Outside Metropolitan Area | 38,085 | 34,433 | 90.4 | 3,651 | 9.6 | 2,807 | 7.4 | 845 | 2.2 | |
| Census Geographic Region | | | | | | | | | | |
| Northeast | 38,463 | 35,602 | 92.6 | 2,861 | 7.4 | 2,064 | 5.4 | 797 | 2.1 | |
| Midwest | 45,779 | 42,353 | 92.5 | 3,426 | 7.5 | 2,618 | 5.7 | 808 | 1.8 | |
| South | 70,955 | 63,485 | 89.5 | 7,470 | 10.5 | 5,509 | 7.8 | 1,961 | 2.8 | |
| West | 43,704 | 38,520 | 88.1 | 5,184 | 11.9 | 3,678 | 8.4 | 1,505 | 3.4 | |

Source: Tabulations of Current Population Survey, Food Security Supplement data
e,f,g,j--See End Notes

TABLE A.5
Food Security Scale Item Responses, 1998 and 1999.^j

| Scale Item ⁱ | Percent of All Households Affirming Item | |
|--|--|------|
| | 1998 | 1999 |
| Household Items: | | |
| Worried food would run out before (I/we) got money to buy more | 16.6 | 14.7 |
| Food bought didn't last and (I/we) didn't have money to get more | 13.3 | 12.2 |
| Couldn't afford to eat balanced meals | 10.9 | 9.5 |
| Adult Items: | | |
| Adult(s) cut size of meals or skipped meals | 6.6 | 5.2 |
| Respondent ate less than felt he/she should | 6.2 | 4.8 |
| Adult(s) cut size or skipped meals in 3 or more months | 4.5 | 3.6 |
| Respondent hungry but didn't eat because couldn't afford | 2.8 | 2.2 |
| Respondent lost weight | 1.7 | 1.2 |
| Adult(s) did not eat for whole day | 1.3 | 1.0 |
| Adult(s) did not eat for whole day in 3 or more months | 0.9 | 0.7 |
| Child Items:^h (See Table A.6) | | |

Source: Tabulations of Current Population Survey, Food Security Supplement data
 i,h,j--See End Notes

TABLE A.6**Food Security Scale Item Responses Among Households with Children, 1998 and 1999^j**

| Scale Item ⁱ | Percent of All Households With Children Affirming Item | |
|--|---|------|
| | 1998 | 1999 |
| Household Items: | | |
| Worried food would run out before (I/we) got money to buy more | 23.6 | 18.3 |
| Food bought didn't last and (I/we) didn't have money to get more | 18.7 | 14.4 |
| Couldn't afford to eat balanced meals | 13.9 | 10.2 |
| Adult Items: | | |
| Adult(s) cut size of meals or skipped meals | 8.4 | 5.7 |
| Respondent ate less than felt he/she should | 8.2 | 5.3 |
| Adult(s) cut size or skipped meals in 3 or more months | 5.4 | 3.6 |
| Respondent hungry but didn't eat because couldn't afford | 3.2 | 2.5 |
| Respondent lost weight | 1.7 | 1.4 |
| Adult(s) did not eat for whole day | 1.4 | 1.0 |
| Adult(s) did not eat for whole day in 3 or more months | 1.0 | 0.6 |
| Child Items:^h | | |
| Relied on few kinds of low-cost food to feed child(ren) | 16.4 | 10.9 |
| Couldn't feed child(ren) balanced meals | 9.6 | 6.4 |
| Child(ren) were not eating enough | 5.0 | 3.5 |
| Cut size of child(ren)'s meals | 1.6 | 0.7 |
| Child(ren) were hungry | 1.2 | 0.6 |
| Child(ren) skipped meals | 0.8 | 0.5 |
| Child(ren) skipped meals in 3 or more months | 0.5 | 0.4 |
| Child(ren) did not eat for whole day | 0.2 | 0.1 |

Source: Tabulations of Current Population Survey, Food Security Supplement data
 I,h,j--See End Notes

TABLE A.7**Food Security Scale Item Responses, 1998 and 1999.^d****(Based on data adjusted to be comparable to 1995-1997.)**

| Scale Item ⁱ | Percent of All Households Affirming Item | |
|--|--|------|
| | 1998 | 1999 |
| Household Items: | | |
| Worried food would run out before (I/we) got money to buy more | 12.8 | 11.3 |
| Food bought didn't last and (I/we) didn't have money to get more | 10.8 | 9.9 |
| Couldn't afford to eat balanced meals | 9.0 | 8.1 |
| Adult Items: | | |
| Adult(s) cut size of meals or skipped meals | 5.9 | 4.7 |
| Respondent ate less than felt he/she should | 5.7 | 4.5 |
| Adult(s) cut size or skipped meals in 3 or more months | 4.2 | 3.4 |
| Respondent hungry but didn't eat because couldn't afford | 2.6 | 2.1 |
| Respondent lost weight | 1.6 | 1.2 |
| Adult(s) did not eat for whole day | 1.3 | 1.0 |
| Adult(s) did not eat for whole day in 3 or more months | 0.9 | 0.6 |
| Child Items:^h | | |
| (See Table A.8) | | |

Source: Tabulations of Current Population Survey, Food Security Supplement data
d,h,i--See End Notes

TABLE A.8**Food Security Scale Item Responses Among Households with Children, 1998 and 1999.^d
(Based on data adjusted to be comparable to 1995-1997.)**

| Scale Item ⁱ | Percent of All Households With Children Affirming Item | |
|--|--|------|
| | 1998 | 1999 |
| Household Items: | | |
| Worried food would run out before (I/we) got money to buy more | 18.9 | 16.7 |
| Food bought didn't last and (I/we) didn't have money to get more | 15.5 | 14.1 |
| Couldn't afford to eat balanced meals | 11.9 | 10.2 |
| Adult Items: | | |
| Adult(s) cut size of meals or skipped meals | 7.7 | 5.8 |
| Respondent ate less than felt he/she should | 7.6 | 5.4 |
| Adult(s) cut size or skipped meals in 3 or more months | 5.1 | 3.7 |
| Respondent hungry but didn't eat because couldn't afford | 3.0 | 2.4 |
| Respondent lost weight | 1.6 | 1.2 |
| Adult(s) did not eat for whole day | 1.4 | 1.1 |
| Adult(s) did not eat for whole day in 3 or more months | 0.9 | 0.7 |
| Child Items:^h | | |
| Relied on few kinds of low-cost food to feed child(ren) | 13.6 | 12.1 |
| Couldn't feed child(ren) balanced meals | 8.5 | 7.3 |
| Child(ren) were not eating enough | 4.4 | 4.1 |
| Cut size of child(ren)'s meals | 1.5 | 0.9 |
| Child(ren) were hungry | 1.2 | 0.8 |
| Child(ren) skipped meals | 0.8 | 0.5 |
| Child(ren) skipped meals in 3 or more months | 0.5 | 0.4 |
| Child(ren) did not eat for whole day | 0.2 | 0.1 |

Source: Tabulations of Current Population Survey, Food Security Supplement data
d,h,i--See End Notes

**B: Prevalence of Food Insecurity and Hunger
Among Households with Children**

TABLE B.1**Food Insecurity and Hunger Among Households with Children, by Selected Household Characteristics, 1998.^j**

| Characteristic | Total | Food Insecure, All | | Food Insecure Without Hunger | | Food Insecure With Hunger Among Adults But Not Children | | Food Insecure With Hunger Among Adults and Children | |
|--|--------|--------------------|------|------------------------------|------|---|------|---|-----|
| | | 1,000 | % | 1,000 | % | 1,000 | % | 1,000 | % |
| Households with Children<18 | 38,036 | 6,701 | 17.6 | 5,049 | 13.3 | 1,321 | 3.5 | 331 | 0.9 |
| Household Composition | | | | | | | | | |
| With Children < 6 | 17,087 | 3,205 | 18.8 | 2,529 | 14.8 | 592 | 3.5 | 84 | 0.5 |
| Married Couple Families | 26,306 | 3,022 | 11.5 | 2,468 | 9.4 | 449 | 1.7 | 105 | 0.4 |
| Female Head, No Spouse | 8,807 | 3,115 | 35.4 | 2,183 | 24.8 | 739 | 8.4 | 193 | 2.2 |
| Male Head, No Spouse | 2,153 | 426 | 19.8 | 308 | 14.3 | 98 | 4.5 | 20 | 0.9 |
| Other Households with Child ^e | 770 | 138 | 17.9 | 89 | 11.6 | 35 | 4.5 | 14 | 1.8 |
| Race and Hispanic Ethnicity | | | | | | | | | |
| White, Non-Hispanic | 25,750 | 3,176 | 12.3 | 2,393 | 9.3 | 638 | 2.5 | 145 | 0.6 |
| Black, Non-Hispanic | 5,645 | 1,744 | 30.9 | 1,268 | 22.5 | 378 | 6.7 | 98 | 1.7 |
| Hispanic ^f | 4,844 | 1,490 | 30.8 | 1,153 | 23.8 | 262 | 5.4 | 76 | 1.6 |
| Other Non-Hispanic | 1,797 | 291 | 16.2 | 235 | 13.1 | 43 | 2.4 | 13 | 0.7 |
| Household Income-to-Poverty Ratio | | | | | | | | | |
| Under 1.00 | 6,012 | 2,814 | 46.8 | 1,975 | 32.8 | 662 | 11.0 | 178 | 3.0 |
| Under 1.30 | 8,162 | 3,606 | 44.2 | 2,581 | 31.6 | 787 | 9.6 | 238 | 2.9 |
| Under 1.85 | 12,777 | 4,738 | 37.1 | 3,466 | 27.1 | 990 | 7.8 | 282 | 2.2 |
| 1.85 and Over | 21,943 | 1,538 | 7.0 | 1,285 | 5.9 | 216 | 1.0 | 37 | 0.2 |
| Income Unknown | 3,316 | 424 | 12.8 | 298 | 9.0 | 115 | 3.5 | 12 | 0.4 |
| Area of Residence^g | | | | | | | | | |
| Inside Metropolitan Area | 30,729 | 5,319 | 17.3 | 3,992 | 13.0 | 1,075 | 3.5 | 251 | 0.8 |
| In Central City | 9,160 | 2,246 | 24.5 | 1,636 | 17.9 | 499 | 5.4 | 112 | 1.2 |
| Not In Central City | 16,210 | 2,227 | 13.7 | 1,700 | 10.5 | 410 | 2.5 | 118 | 0.7 |
| Outside Metropolitan Area | 7,308 | 1,383 | 18.9 | 1,057 | 14.5 | 246 | 3.4 | 80 | 1.1 |
| Census Geographic Region | | | | | | | | | |
| Northeast | 6,750 | 1,022 | 15.1 | 779 | 11.5 | 197 | 2.9 | 46 | 0.7 |
| Midwest | 8,898 | 1,257 | 14.1 | 942 | 10.6 | 244 | 2.7 | 71 | 0.8 |
| South | 13,704 | 2,611 | 19.0 | 1,916 | 14.0 | 568 | 4.1 | 127 | 0.9 |
| West | 8,684 | 1,811 | 20.9 | 1,413 | 16.3 | 312 | 3.6 | 86 | 1.0 |

Source: Tabulations of Current Population Survey, Food Security Supplement data e,f,g,j--See End Notes

TABLE B.2**Number of Children in Households with Food Insecurity and Hunger, by Selected Household Characteristics, 1998.^{bj}**

| Characteristic | Total | Food Insecure, All | | Food Insecure Without Hunger | | Food Insecure With Hunger Among Adults But Not Children | | Food Insecure With Hunger Among Adults and Children | |
|--|--------|--------------------|-------|------------------------------|-------|---|-------|---|-------|
| | | 1,000 | 1,000 | % | 1,000 | % | 1,000 | % | 1,000 |
| Children <18 in all Households | 71,282 | 14,027 | 19.7 | 10,658 | 15.0 | 2,653 | 3.7 | 716 | 1.0 |
| Household Composition | | | | | | | | | |
| With Children < 6 | 35,711 | 7,634 | 21.4 | 6,034 | 16.9 | 1,379 | 3.9 | 221 | 0.6 |
| Married Couple Families | 50,688 | 6,817 | 13.4 | 5,647 | 11.1 | 920 | 1.8 | 250 | 0.5 |
| Female Head, No Spouse | 16,012 | 6,217 | 38.8 | 4,308 | 26.9 | 1,515 | 9.5 | 395 | 2.5 |
| Male Head, No Spouse | 3,452 | 756 | 21.9 | 540 | 15.6 | 164 | 4.7 | 52 | 1.5 |
| Other Households with Child ^c | 1,130 | 237 | 21.0 | 164 | 14.5 | 55 | 4.8 | 19 | 1.6 |
| Race and Hispanic Ethnicity | | | | | | | | | |
| White, Non-Hispanic | 46,515 | 5,991 | 12.9 | 4,580 | 9.8 | 1,155 | 2.5 | 256 | 0.5 |
| Black, Non-Hispanic | 10,753 | 3,634 | 33.8 | 2,586 | 24.0 | 817 | 7.6 | 231 | 2.1 |
| Hispanic ^f | 10,685 | 3,723 | 34.8 | 2,945 | 27.6 | 585 | 5.5 | 193 | 1.8 |
| Other Non-Hispanic | 3,329 | 679 | 20.4 | 547 | 16.4 | 96 | 2.9 | 36 | 1.1 |
| Household Income-to-Poverty Ratio | | | | | | | | | |
| Under 1.00 | 13,801 | 6,726 | 48.7 | 4,764 | 34.5 | 1,546 | 11.2 | 416 | 3.0 |
| Under 1.30 | 18,481 | 8,422 | 45.6 | 6,125 | 33.1 | 1,750 | 9.5 | 547 | 3.0 |
| Under 1.85 | 27,381 | 10,611 | 38.8 | 7,854 | 28.7 | 2,135 | 7.8 | 621 | 2.3 |
| 1.85 and Over | 38,950 | 2,752 | 7.1 | 2,337 | 6.0 | 334 | 0.9 | 80 | 0.2 |
| Income Unknown | 4,951 | 664 | 13.4 | 466 | 9.4 | 184 | 3.7 | 14 | 0.3 |
| Area of Residence^g | | | | | | | | | |
| Inside Metropolitan Area | 57,451 | 11,202 | 19.5 | 8,459 | 14.7 | 2,167 | 3.8 | 576 | 1.0 |
| In Central City | 17,552 | 4,881 | 27.8 | 3,628 | 20.7 | 1,004 | 5.7 | 249 | 1.4 |
| Not In Central City | 30,190 | 4,710 | 15.6 | 3,593 | 11.9 | 835 | 2.8 | 281 | 0.9 |
| Outside Metropolitan Area | 13,831 | 2,826 | 20.4 | 2,199 | 15.9 | 487 | 3.5 | 140 | 1.0 |
| Census Geographic Region | | | | | | | | | |
| Northeast | 12,704 | 2,042 | 16.1 | 1,516 | 11.9 | 430 | 3.4 | 97 | 0.8 |
| Midwest | 17,224 | 2,693 | 15.6 | 2,053 | 11.9 | 516 | 3.0 | 124 | 0.7 |
| South | 24,229 | 5,133 | 21.2 | 3,780 | 15.6 | 1,086 | 4.5 | 267 | 1.1 |
| West | 17,125 | 4,159 | 24.3 | 3,310 | 19.3 | 622 | 3.6 | 228 | 1.3 |

Source: Tabulations of Current Population Survey, Food Security Supplement data
b,e,f,g,j--See End Notes

TABLE B.3**Food Insecurity and Hunger Among Households with Children, by Selected Household Characteristics, 1999.^j**

| Characteristic | Total | Food Insecure, All | | Food Insecure Without Hunger | | Food Insecure With Hunger Among Adults But Not Children | | Food Insecure With Hunger Among Adults and Children | |
|--|--------|--------------------|------|------------------------------|------|---|-----|---|-----|
| | | 1,000 | % | 1,000 | % | 1,000 | % | 1,000 | % |
| Households with Children<18 | 37,885 | 5,594 | 14.8 | 4,340 | 11.5 | 1,035 | 2.7 | 219 | 0.6 |
| Household Composition | | | | | | | | | |
| With Children < 6 | 17,231 | 2,792 | 16.2 | 2,265 | 13.1 | 458 | 2.7 | 69 | 0.4 |
| Married Couple Families | 26,304 | 2,532 | 9.6 | 2,105 | 8.0 | 353 | 1.3 | 75 | 0.3 |
| Female Head, No Spouse | 8,744 | 2,598 | 29.7 | 1,890 | 21.6 | 585 | 6.7 | 123 | 1.4 |
| Male Head, No Spouse | 2,187 | 370 | 16.9 | 280 | 12.8 | 72 | 3.3 | 17 | 0.8 |
| Other Households with Child ^e | 650 | 94 | 14.4 | 66 | 10.1 | 25 | 3.8 | 3 | 0.5 |
| Race and Hispanic Ethnicity | | | | | | | | | |
| White, Non-Hispanic | 25,432 | 2,559 | 10.1 | 2,010 | 7.9 | 454 | 1.8 | 95 | 0.4 |
| Black, Non-Hispanic | 5,413 | 1,416 | 26.2 | 1,090 | 20.1 | 272 | 5.0 | 54 | 1.0 |
| Hispanic ^f | 5,373 | 1,390 | 25.9 | 1,063 | 19.8 | 272 | 5.1 | 54 | 1.0 |
| Other Non-Hispanic | 1,667 | 230 | 13.8 | 177 | 10.6 | 37 | 2.2 | 15 | 0.9 |
| Household Income-to-Poverty Ratio | | | | | | | | | |
| Under 1.00 | 5,701 | 2,448 | 42.9 | 1,815 | 31.8 | 522 | 9.2 | 111 | 1.9 |
| Under 1.30 | 7,583 | 3,058 | 40.3 | 2,278 | 30.0 | 652 | 8.6 | 129 | 1.7 |
| Under 1.85 | 11,702 | 3,963 | 33.9 | 2,992 | 25.6 | 794 | 6.8 | 177 | 1.5 |
| 1.85 and Over | 22,505 | 1,261 | 5.6 | 1,064 | 4.7 | 158 | 0.7 | 38 | 0.2 |
| Income Unknown | 3,678 | 370 | 10.1 | 283 | 7.7 | 83 | 2.3 | 4 | 0.1 |
| Area of Residence^g | | | | | | | | | |
| Inside Metropolitan Area | 30,791 | 4,524 | 14.7 | 3,474 | 11.3 | 857 | 2.8 | 193 | 0.6 |
| In Central City | 9,004 | 1,890 | 21.0 | 1,476 | 16.4 | 350 | 3.9 | 64 | 0.7 |
| Not In Central City | 16,617 | 1,919 | 11.5 | 1,436 | 8.6 | 379 | 2.3 | 104 | 0.6 |
| Outside Metropolitan Area | 7,094 | 1,070 | 15.1 | 866 | 12.2 | 178 | 2.5 | 26 | 0.4 |
| Census Geographic Region | | | | | | | | | |
| Northeast | 6,884 | 830 | 12.1 | 642 | 9.3 | 163 | 2.4 | 25 | 0.4 |
| Midwest | 8,681 | 1,090 | 12.6 | 903 | 10.4 | 151 | 1.7 | 36 | 0.4 |
| South | 13,621 | 2,139 | 15.7 | 1,705 | 12.5 | 352 | 2.6 | 82 | 0.6 |
| West | 8,699 | 1,536 | 17.7 | 1,090 | 12.5 | 369 | 4.2 | 76 | 0.9 |

Source: Tabulations of Current Population Survey, Food Security Supplement data
e,f,g,j--See End Notes

TABLE B.4**Number of Children in Households with Food Insecurity and Hunger, by Selected Household Characteristics, 1999.** ^{bj}

| Characteristic | Total | Food Insecure, All | | Food Insecure Without Hunger | | Food Insecure With Hunger Among Adults But Not Children | | Food Insecure With Hunger Among Adults and Children | |
|--|--------|--------------------|---------|------------------------------|------|---|-----|---|-----|
| | | 1,000 | 1,000 % | 1,000 | % | 1,000 | % | 1,000 | % |
| Children <18 in all Households | 71,417 | 12,074 | 16.9 | 9,368 | 13.1 | 2,196 | 3.1 | 511 | 0.7 |
| Household Composition | | | | | | | | | |
| With Children < 6 | 36,135 | 6,725 | 18.6 | 5,368 | 14.9 | 1,127 | 3.1 | 230 | 0.6 |
| Married Couple Families | 50,818 | 5,861 | 11.5 | 4,847 | 9.5 | 811 | 1.6 | 203 | 0.4 |
| Female Head, No Spouse | 16,133 | 5,390 | 33.4 | 3,921 | 24.3 | 1,208 | 7.5 | 261 | 1.6 |
| Male Head, No Spouse | 3,526 | 664 | 18.8 | 498 | 14.1 | 137 | 3.9 | 29 | 0.8 |
| Other Households with Child ^c | 939 | 160 | 17.1 | 102 | 10.8 | 40 | 4.3 | 18 | 2.0 |
| Race and Hispanic Ethnicity | | | | | | | | | |
| White, Non-Hispanic | 45,933 | 5,055 | 11.0 | 3,989 | 8.7 | 875 | 1.9 | 191 | 0.4 |
| Black, Non-Hispanic | 10,733 | 3,066 | 28.6 | 2,399 | 22.4 | 556 | 5.2 | 111 | 1.0 |
| Hispanic ^f | 11,485 | 3,351 | 29.2 | 2,533 | 22.1 | 671 | 5.8 | 147 | 1.3 |
| Other Non-Hispanic | 3,266 | 602 | 18.4 | 446 | 13.7 | 93 | 2.8 | 63 | 1.9 |
| Household Income-to-Poverty Ratio | | | | | | | | | |
| Under 1.00 | 13,301 | 5,850 | 44.0 | 4,281 | 32.2 | 1,272 | 9.6 | 297 | 2.2 |
| Under 1.30 | 17,475 | 7,265 | 41.6 | 5,378 | 30.8 | 1,546 | 8.8 | 342 | 2.0 |
| Under 1.85 | 25,840 | 9,102 | 35.2 | 6,846 | 26.5 | 1,827 | 7.1 | 429 | 1.7 |
| 1.85 and Over | 40,471 | 2,340 | 5.8 | 2,034 | 5.0 | 233 | 0.6 | 73 | 0.2 |
| Income Unknown | 5,106 | 633 | 12.4 | 488 | 9.6 | 135 | 2.7 | 9 | 0.2 |
| Area of Residence^g | | | | | | | | | |
| Inside Metropolitan Area | 57,734 | 9,715 | 16.8 | 7,479 | 13.0 | 1,802 | 3.1 | 434 | 0.8 |
| In Central City | 17,231 | 4,137 | 24.0 | 3,203 | 18.6 | 786 | 4.6 | 148 | 0.9 |
| Not In Central City | 31,002 | 4,088 | 13.2 | 3,114 | 10.0 | 736 | 2.4 | 238 | 0.8 |
| Outside Metropolitan Area | 13,683 | 2,360 | 17.2 | 1,889 | 13.8 | 394 | 2.9 | 77 | 0.6 |
| Census Geographic Region | | | | | | | | | |
| Northeast | 12,896 | 1,795 | 13.9 | 1,380 | 10.7 | 371 | 2.9 | 44 | 0.3 |
| Midwest | 16,633 | 2,357 | 14.2 | 1,940 | 11.7 | 321 | 1.9 | 96 | 0.6 |
| South | 24,873 | 4,462 | 17.9 | 3,589 | 14.4 | 700 | 2.8 | 172 | 0.7 |
| West | 17,015 | 3,460 | 20.3 | 2,458 | 14.4 | 803 | 4.7 | 199 | 1.2 |

Source: Tabulations of Current Population Survey, Food Security Supplement data
b,e,f,g,j--See End Notes

TABLE B.5
Households with Hunger Among Children, by Selected Household
Characteristics, 1995.^j

| Characteristic | Total | Food Insecure With Hunger Among Adults and Children | |
|--|--------|---|-----|
| | | 1,000 | % |
| Households with Children<18 | 38,133 | 415 | 1.1 |
| Household Composition | | | |
| With Children < 6 | 18,313 | 174 | 0.9 |
| Married Couple Families | 26,787 | 144 | 0.5 |
| Female Head, No Spouse | 8,798 | 233 | 2.6 |
| Male Head, No Spouse | 1,884 | 25 | 1.3 |
| Other Households with Child ^e | 663 | 13 | 1.9 |
| Race and Hispanic Ethnicity | | | |
| White, Non-Hispanic | 26,637 | 175 | 0.7 |
| Black, Non-Hispanic | 5,762 | 127 | 2.2 |
| Hispanic ^f | 4,475 | 100 | 2.2 |
| Other Non-Hispanic | 1,259 | 13 | 1.0 |
| Household Income-to-Poverty Ratio | | | |
| Under 1.00 | 7,821 | 246 | 3.1 |
| Under 1.30 | 10,025 | 308 | 3.1 |
| Under 1.85 | 14,587 | 347 | 2.4 |
| 1.85 and Over | 20,852 | 47 | 0.2 |
| Income Unknown | 2,694 | 21 | 0.8 |
| Area of Residence^g | | | |
| Inside Metropolitan Area | 29,211 | 365 | 1.2 |
| In Central City | 8,836 | 138 | 1.6 |
| Not In Central City | 14,679 | 158 | 1.1 |
| Outside Metropolitan Area | 8,743 | 49 | 0.6 |
| Census Geographic Region | | | |
| Northeast | 7,075 | 51 | 0.7 |
| Midwest | 8,866 | 74 | 0.8 |
| South | 13,860 | 160 | 1.2 |
| West | 8,332 | 131 | 1.6 |

Source: Tabulations of Current Population Survey, Food Security Supplement data
e,f,g,j--See End Notes

TABLE B.6
Households with Hunger Among Children, by Selected Household
Characteristics, 1996.^j

| Characteristic | Total | Food Insecure With Hunger Among Adults and Children | |
|--|--------|---|-----|
| | | 1,000 | % |
| Households with Children<18 | 38,196 | 379 | 1.0 |
| Household Composition | | | |
| With Children < 6 | 17,871 | 148 | 0.8 |
| Married Couple Families | 26,738 | 113 | 0.4 |
| Female Head, No Spouse | 8,721 | 230 | 2.6 |
| Male Head, No Spouse | 2,005 | 25 | 1.2 |
| Other Households with Child ^e | 732 | 12 | 1.6 |
| Race and Hispanic Ethnicity | | | |
| White, Non-Hispanic | 26,087 | 121 | 0.5 |
| Black, Non-Hispanic | 5,774 | 138 | 2.4 |
| Hispanic ^f | 4,644 | 108 | 2.3 |
| Other Non-Hispanic | 1,690 | 13 | 0.7 |
| Household Income-to-Poverty Ratio | | | |
| Under 1.00 | 3,718 | 122 | 3.3 |
| Under 1.30 | 9,434 | 302 | 3.2 |
| Under 1.85 | 14,321 | 320 | 2.2 |
| 1.85 and Over | 20,642 | 35 | 0.2 |
| Income Unknown | 3,233 | 24 | 0.7 |
| Area of Residence^g | | | |
| Inside Metropolitan Area | 30,431 | 330 | 1.1 |
| In Central City | 9,305 | 180 | 1.9 |
| Not In Central City | 15,826 | 108 | 0.7 |
| Outside Metropolitan Area | 7,765 | 50 | 0.6 |
| Census Geographic Region | | | |
| Northeast | 6,960 | 59 | 0.9 |
| Midwest | 9,029 | 68 | 0.7 |
| South | 13,713 | 137 | 1.0 |
| West | 8,495 | 116 | 1.4 |

Source: Tabulations of Current Population Survey, Food Security Supplement data
e,f,g,j--See End Notes

TABLE B.7
Households with Hunger Among Children, by Selected Household
Characteristics, 1997.^j

| Characteristic | Total | Food Insecure With Hunger Among Adults and Children | |
|--|--------|---|-----|
| | | 1,000 | % |
| Households with Children<18 | 38,200 | 305 | 0.8 |
| Household Composition | | | |
| With Children < 6 | 17,538 | 99 | 0.6 |
| Married Couple Families | 26,323 | 84 | 0.3 |
| Female Head, No Spouse | 8,978 | 205 | 2.3 |
| Male Head, No Spouse | 2,201 | 8 | 0.4 |
| Other Households with Child ^e | 698 | 8 | 1.2 |
| Race and Hispanic Ethnicity | | | |
| White, Non-Hispanic | 26,060 | 118 | 0.5 |
| Black, Non-Hispanic | 5,756 | 103 | 1.8 |
| Hispanic ^f | 4,796 | 73 | 1.5 |
| Other Non-Hispanic | 1,588 | 11 | 0.7 |
| Household Income-to-Poverty Ratio | | | |
| Under 1.00 | 3,739 | 74 | 2.0 |
| Under 1.30 | 9,250 | 197 | 2.1 |
| Under 1.85 | 13,980 | 247 | 1.8 |
| 1.85 and Over | 21,025 | 40 | 0.2 |
| Income Unknown | 3,195 | 18 | 0.6 |
| Area of Residence^g | | | |
| Inside Metropolitan Area | 30,556 | 273 | 0.9 |
| In Central City | 9,292 | 128 | 1.4 |
| Not In Central City | 15,980 | 98 | 0.6 |
| Outside Metropolitan Area | 7,644 | 33 | 0.4 |
| Census Geographic Region | | | |
| Northeast | 7,251 | 50 | 0.7 |
| Midwest | 8,877 | 60 | 0.7 |
| South | 13,670 | 114 | 0.8 |
| West | 8,403 | 81 | 1.0 |

Source: Tabulations of Current Population Survey, Food Security Supplement data
e,f,g,j--See End Notes

TABLE B.8**Number of Children in Households with Hunger Among Children, by Selected Household Characteristics, 1995.^{bj}**

| Characteristic | TOTAL | Food Insecure With Hunger Among Adults and Children | |
|--|--------|---|-----|
| | | 1,000 | % |
| Children <18 in all Households | 70,193 | 887 | 1.3 |
| Household Composition | | | |
| Married Couple Families | 50,635 | 389 | 0.8 |
| Female Head, No Spouse | 15,745 | 445 | 2.8 |
| Male Head, No Spouse | 2,874 | 32 | 1.1 |
| Other Households with Child ^e | 940 | 21 | 2.2 |
| Race and Hispanic Ethnicity | | | |
| White, Non-Hispanic | 47,609 | 357 | 0.8 |
| Black, Non-Hispanic | 10,856 | 253 | 2.3 |
| Hispanic ^f | 9,645 | 254 | 2.6 |
| Other Non-Hispanic | 2,084 | 23 | 1.1 |
| Household Income-to-Poverty Ratio | | | |
| Under 1.00 | 16,974 | 571 | 3.4 |
| Under 1.30 | 21,488 | 693 | 3.2 |
| Under 1.85 | 30,931 | 771 | 2.5 |
| 1.85 and Over | 35,642 | 86 | 0.2 |
| Income Unknown | 3,620 | 31 | 0.9 |
| Area of Residence^g | | | |
| Inside Metropolitan Area | 53,126 | 781 | 1.5 |
| In Central City | 16,273 | 286 | 1.8 |
| Not In Central City | 26,605 | 369 | 1.4 |
| Outside Metropolitan Area | 16,688 | 103 | 0.6 |
| Census Geographic Region | | | |
| Northeast | 12,616 | 100 | 0.8 |
| Midwest | 17,152 | 142 | 0.8 |
| South | 24,946 | 324 | 1.3 |
| West | 15,479 | 322 | 2.1 |

Source: Tabulations of Current Population Survey, Food Security Supplement data

b,e,f,g,j--See End Notes

TABLE B.9**Number of Children in Households with Hunger Among Children, by Selected Household Characteristics, 1996.^{bj}**

| Characteristic | TOTAL | Food Insecure With Hunger Among Adults and Children | |
|--|--------|---|-----|
| | | 1,000 | % |
| Children <18 in all Households | 71,172 | 917 | 1.3 |
| Household Composition | | | |
| Married Couple Families | 51,351 | 320 | 0.6 |
| Female Head, No Spouse | 15,561 | 539 | 3.5 |
| Male Head, No Spouse | 3,210 | 44 | 1.4 |
| Other Households with Child ^c | 1,049 | 14 | 1.3 |
| Race and Hispanic Ethnicity | | | |
| White, Non-Hispanic | 46,583 | 251 | 0.5 |
| Black, Non-Hispanic | 10,983 | 338 | 3.1 |
| Hispanic ^f | 10,176 | 296 | 2.9 |
| Other Non-Hispanic | 3,430 | 32 | 0.9 |
| Household Income-to-Poverty Ratio | | | |
| Under 1.00 | 8,323 | 291 | 3.5 |
| Under 1.30 | 21,143 | 771 | 3.6 |
| Under 1.85 | 30,578 | 821 | 2.7 |
| 1.85 and Over | 36,251 | 61 | 0.2 |
| Income Unknown | 4,343 | 36 | 0.8 |
| Area of Residence^g | | | |
| Inside Metropolitan Area | 56,574 | 791 | 1.4 |
| In Central City | 17,560 | 400 | 2.3 |
| Not In Central City | 29,347 | 290 | 1.0 |
| Outside Metropolitan Area | 14,598 | 126 | 0.9 |
| Census Geographic Region | | | |
| Northeast | 12,746 | 136 | 1.1 |
| Midwest | 17,292 | 153 | 0.9 |
| South | 24,615 | 323 | 1.3 |
| West | 16,519 | 305 | 1.8 |

Source: Tabulations of Current Population Survey, Food Security Supplement data

b,e,f,g,j--See End Notes

TABLE B.10**Number of Children in Households with Hunger Among Children, by Selected Household Characteristics, 1997.^{bj}**

| Characteristic | TOTAL | Food Insecure With Hunger Among Adults and Children | |
|--|--------|---|-----|
| | | 1,000 | % |
| Children <18 in all Households | 70,948 | 651 | 0.9 |
| Household Composition | | | |
| Married Couple Families | 50,321 | 224 | 0.4 |
| Female Head, No Spouse | 16,166 | 405 | 2.5 |
| Male Head, No Spouse | 3,484 | 16 | 0.4 |
| Other Households with Child ^c | 977 | 7 | 0.7 |
| Race and Hispanic Ethnicity | | | |
| White, Non-Hispanic | 46,640 | 247 | 0.5 |
| Black, Non-Hispanic | 10,643 | 213 | 2.0 |
| Hispanic ^f | 10,536 | 156 | 1.5 |
| Other Non-Hispanic | 3,130 | 34 | 1.1 |
| Household Income-to-Poverty Ratio | | | |
| Under 1.00 | 8,349 | 173 | 2.1 |
| Under 1.30 | 20,557 | 443 | 2.2 |
| Under 1.85 | 30,035 | 552 | 1.8 |
| 1.85 and Over | 36,701 | 79 | 0.2 |
| Income Unknown | 4,213 | 20 | 0.5 |
| Area of Residence^g | | | |
| Inside Metropolitan Area | 56,471 | 600 | 1.1 |
| In Central City | 17,408 | 275 | 1.6 |
| Not In Central City | 29,612 | 238 | 0.8 |
| Outside Metropolitan Area | 14,478 | 51 | 0.4 |
| Census Geographic Region | | | |
| Northeast | 13,245 | 120 | 0.9 |
| Midwest | 16,766 | 129 | 0.8 |
| South | 24,497 | 221 | 0.9 |
| West | 16,440 | 181 | 1.1 |

Source: Tabulations of Current Population Survey, Food Security Supplement data

b,e,f,g,j--See End Notes

**C: Estimates of Change in Household Prevalence of Food Insecurity and
Hunger, 1995-1999**

TABLE C.1
Household Food Security Status, by Selected Household Characteristics, 1998.
(Based on data adjusted to be comparable to 1995-1997.)^d

| CHARACTERISTIC | TOTAL | | | FOOD SECURE | | FOOD INSECURE | | | |
|--|---------|--------|------|-------------|------|----------------|------|-------------|------|
| | 1,000 | 1,000 | % | All | | Without Hunger | | With Hunger | |
| | | | | 1,000 | % | 1,000 | % | 1,000 | % |
| All Households | 103,492 | 93,040 | 89.9 | 10,452 | 10.1 | 6,821 | 6.6 | 3,631 | 3.5 |
| Household Composition | | | | | | | | | |
| With Children < 6 | 17,137 | 14,350 | 83.7 | 2,787 | 16.3 | 2,133 | 12.4 | 654 | 3.8 |
| With Children < 18 | 38,123 | 32,312 | 84.8 | 5,810 | 15.2 | 4,235 | 11.1 | 1,576 | 4.1 |
| Married Couple Families | 26,355 | 23,819 | 90.4 | 2,536 | 9.6 | 2,014 | 7.6 | 522 | 2.0 |
| Female Head, No Spouse | 8,837 | 6,018 | 68.1 | 2,819 | 31.9 | 1,918 | 21.7 | 900 | 10.2 |
| Male Head, No Spouse | 2,160 | 1,823 | 84.4 | 338 | 15.6 | 230 | 10.6 | 108 | 5.0 |
| Other Households with Child ^e | 770 | 652 | 84.7 | 118 | 15.3 | 72 | 9.4 | 46 | 6.0 |
| With No Children < 18 | 65,369 | 60,727 | 92.9 | 4,642 | 7.1 | 2,587 | 4.0 | 2,055 | 3.1 |
| More Than One Adult | 38,603 | 36,555 | 94.7 | 2,048 | 5.3 | 1,217 | 3.2 | 830 | 2.2 |
| Women Living Alone | 15,539 | 14,097 | 90.7 | 1,441 | 9.3 | 809 | 5.2 | 633 | 4.1 |
| Men Living Alone | 11,227 | 10,074 | 89.7 | 1,153 | 10.3 | 561 | 5.0 | 592 | 5.3 |
| Households With Elderly | 24,359 | 23,026 | 94.5 | 1,333 | 5.5 | 905 | 3.7 | 428 | 1.8 |
| Elderly Living Alone | 10,042 | 9,506 | 94.7 | 536 | 5.3 | 343 | 3.4 | 194 | 1.9 |
| Race and Hispanic Ethnicity | | | | | | | | | |
| White, Non-Hispanic | 78,353 | 72,794 | 92.9 | 5,558 | 7.1 | 3,634 | 4.6 | 1,924 | 2.5 |
| Black, Non-Hispanic | 12,505 | 9,930 | 79.4 | 2,574 | 20.6 | 1,569 | 12.5 | 1,006 | 8.0 |
| Hispanic ^f | 8,707 | 6,827 | 78.4 | 1,879 | 21.6 | 1,311 | 15.1 | 568 | 6.5 |
| Other Non-Hispanic | 3,928 | 3,488 | 88.8 | 440 | 11.2 | 307 | 7.8 | 133 | 3.4 |
| Household Income-to-Poverty Ratio | | | | | | | | | |
| Under 1.00 | 12,311 | 7,963 | 64.7 | 4,349 | 35.3 | 2,705 | 22.0 | 1,644 | 13.4 |
| Under 1.30 | 17,873 | 12,163 | 68.1 | 5,710 | 31.9 | 3,629 | 20.3 | 2,081 | 11.6 |
| Under 1.85 | 28,943 | 21,432 | 74.0 | 7,511 | 26.0 | 4,894 | 16.9 | 2,617 | 9.0 |
| 1.85 and Over | 62,267 | 60,011 | 96.4 | 2,256 | 3.6 | 1,534 | 2.5 | 722 | 1.2 |
| Income Unknown | 12,282 | 11,596 | 94.4 | 685 | 5.6 | 394 | 3.2 | 292 | 2.4 |
| Area of Residence^g | | | | | | | | | |
| Inside Metropolitan Area | 83,228 | 74,899 | 90.0 | 8,329 | 10.0 | 5,375 | 6.5 | 2,954 | 3.5 |
| In Central City | 26,615 | 22,882 | 86.0 | 3,733 | 14.0 | 2,272 | 8.5 | 1,461 | 5.5 |
| Not In Central City | 42,294 | 39,049 | 92.3 | 3,246 | 7.7 | 2,201 | 5.2 | 1,044 | 2.5 |
| Outside Metropolitan Area | 20,264 | 18,140 | 89.5 | 2,124 | 10.5 | 1,447 | 7.1 | 677 | 3.3 |
| Census Geographic Region | | | | | | | | | |
| Northeast | 19,626 | 17,849 | 90.9 | 1,778 | 9.1 | 1,159 | 5.9 | 618 | 3.2 |
| Midwest | 24,268 | 22,386 | 92.2 | 1,882 | 7.8 | 1,240 | 5.1 | 642 | 2.6 |
| South | 37,368 | 33,261 | 89.0 | 4,107 | 11.0 | 2,659 | 7.1 | 1,448 | 3.9 |
| West | 22,229 | 19,543 | 87.9 | 2,686 | 12.1 | 1,763 | 7.9 | 923 | 4.2 |

Source: Tabulations of Current Population Survey, Food Security Supplement data.
d,e,f,g -- See End Notes

TABLE C.2
Number of Adults by Food Security Status of Household, by Selected Household Characteristics, 1998.
(Based on data adjusted to be comparable to 1995-1997.)^{ad}

| CHARACTERISTIC | TOTAL | | FOOD SECURE | | FOOD INSECURE | | | | | |
|--|---------|---|-------------|------|---------------|------|----------------|------|-------------|------|
| | 1,000 | % | 1,000 | % | All | | Without Hunger | | With Hunger | |
| | | | | | 1,000 | % | 1,000 | % | 1,000 | % |
| All Households | 197,423 | | 178,631 | 90.5 | 18,792 | 9.5 | 12,657 | 6.4 | 6,135 | 3.1 |
| Household Composition | | | | | | | | | | |
| With Children < 6 | 36,051 | | 30,458 | 84.5 | 5,592 | 15.5 | 4,307 | 11.9 | 1,285 | 3.6 |
| With Children < 18 | 80,855 | | 69,559 | 86.0 | 11,296 | 14.0 | 8,433 | 10.4 | 2,863 | 3.5 |
| Married Couple Families | 61,503 | | 55,238 | 89.8 | 6,265 | 10.2 | 4,963 | 8.1 | 1,302 | 2.1 |
| Female Head, No Spouse | 13,748 | | 9,581 | 69.7 | 4,167 | 30.3 | 2,891 | 21.0 | 1,276 | 9.3 |
| Male Head, No Spouse | 3,948 | | 3,317 | 84.0 | 631 | 16.0 | 443 | 11.2 | 187 | 4.7 |
| Other Households with Child ^e | 1,656 | | 1,422 | 85.9 | 234 | 14.1 | 136 | 8.2 | 98 | 5.9 |
| With No Children < 18 | 116,568 | | 109,072 | 93.6 | 7,496 | 6.4 | 4,224 | 3.6 | 3,272 | 2.8 |
| More Than One Adult | 89,802 | | 84,900 | 94.5 | 4,902 | 5.5 | 2,855 | 3.2 | 2,047 | 2.3 |
| Women Living Alone | 15,539 | | 14,097 | 90.7 | 1,441 | 9.3 | 809 | 5.2 | 633 | 4.1 |
| Men Living Alone | 11,227 | | 10,074 | 89.7 | 1,153 | 10.3 | 561 | 5.0 | 592 | 5.3 |
| Households With Elderly | 44,002 | | 41,308 | 93.9 | 2,694 | 6.1 | 1,815 | 4.1 | 879 | 2.0 |
| Elderly Living Alone | 10,042 | | 9,506 | 94.7 | 536 | 5.3 | 343 | 3.4 | 194 | 1.9 |
| Race and Hispanic Ethnicity | | | | | | | | | | |
| White, Non-Hispanic | 147,296 | | 137,795 | 93.5 | 9,501 | 6.5 | 6,327 | 4.3 | 3,174 | 2.2 |
| Black, Non-Hispanic | 22,433 | | 18,037 | 80.4 | 4,396 | 19.6 | 2,761 | 12.3 | 1,635 | 7.3 |
| Hispanic ^f | 19,284 | | 15,254 | 79.1 | 4,030 | 20.9 | 2,924 | 15.2 | 1,107 | 5.7 |
| Other Non-Hispanic | 8,411 | | 7,546 | 89.7 | 866 | 10.3 | 646 | 7.7 | 219 | 2.6 |
| Household Income-to-Poverty Ratio | | | | | | | | | | |
| Under 1.00 | 21,419 | | 13,889 | 64.8 | 7,530 | 35.2 | 4,821 | 22.5 | 2,709 | 12.6 |
| Under 1.30 | 31,196 | | 21,213 | 68.0 | 9,982 | 32.0 | 6,564 | 21.0 | 3,418 | 11.0 |
| Under 1.85 | 51,730 | | 38,319 | 74.1 | 13,410 | 25.9 | 9,005 | 17.4 | 4,405 | 8.5 |
| 1.85 and Over | 122,305 | | 118,163 | 96.6 | 4,142 | 3.4 | 2,859 | 2.3 | 1,284 | 1.0 |
| Income Unknown | 23,388 | | 22,148 | 94.7 | 1,240 | 5.3 | 793 | 3.4 | 447 | 1.9 |
| Area of Residence^g | | | | | | | | | | |
| Inside Metropolitan Area | 159,416 | | 144,354 | 90.6 | 15,062 | 9.4 | 10,048 | 6.3 | 5,014 | 3.1 |
| In Central City | 48,676 | | 42,124 | 86.5 | 6,552 | 13.5 | 4,147 | 8.5 | 2,405 | 4.9 |
| Not In Central City | 83,659 | | 77,532 | 92.7 | 6,126 | 7.3 | 4,251 | 5.1 | 1,875 | 2.2 |
| Outside Metropolitan Area | 38,007 | | 34,277 | 90.2 | 3,730 | 9.8 | 2,609 | 6.9 | 1,121 | 3.0 |
| Census Geographic Region | | | | | | | | | | |
| Northeast | 38,245 | | 35,207 | 92.1 | 3,038 | 7.9 | 2,075 | 5.4 | 964 | 2.5 |
| Midwest | 45,978 | | 42,715 | 92.9 | 3,263 | 7.1 | 2,192 | 4.8 | 1,071 | 2.3 |
| South | 69,846 | | 62,413 | 89.4 | 7,433 | 10.6 | 4,908 | 7.0 | 2,525 | 3.6 |
| West | 43,354 | | 38,296 | 88.3 | 5,058 | 11.7 | 3,482 | 8.0 | 1,576 | 3.6 |

Source: Tabulations of Current Population Survey, Food Security Supplement data.
d,e,f,g -- See End Notes

TABLE C.3
Household Food Security Status, by Selected Household Characteristics, 1999.
(Based on data adjusted to be comparable to 1995-1997.)^d

| CHARACTERISTIC | TOTAL | | FOOD SECURE | | FOOD INSECURE | | | | | |
|--|---------|---|-------------|------|---------------|------|----------------|------|-------------|------|
| | 1,000 | % | 1,000 | % | All | | Without Hunger | | With Hunger | |
| | | | | | 1,000 | % | 1,000 | % | 1,000 | % |
| All Households | 104,816 | | 95,664 | 91.3 | 9,152 | 8.7 | 6,166 | 5.9 | 2,987 | 2.8 |
| Household Composition | | | | | | | | | | |
| With Children < 6 | 17,260 | | 14,782 | 85.6 | 2,479 | 14.4 | 1,967 | 11.4 | 511 | 3.0 |
| With Children < 18 | 37,927 | | 33,030 | 87.1 | 4,897 | 12.9 | 3,682 | 9.7 | 1,215 | 3.2 |
| Married Couple Families | 26,318 | | 24,205 | 92.0 | 2,113 | 8.0 | 1,691 | 6.4 | 421 | 1.6 |
| Female Head, No Spouse | 8,769 | | 6,404 | 73.0 | 2,365 | 27.0 | 1,686 | 19.2 | 679 | 7.7 |
| Male Head, No Spouse | 2,187 | | 1,857 | 84.9 | 330 | 15.1 | 244 | 11.1 | 87 | 4.0 |
| Other Households with Child ^e | 653 | | 564 | 86.3 | 89 | 13.7 | 61 | 9.4 | 28 | 4.3 |
| With No Children < 18 | 66,889 | | 62,634 | 93.6 | 4,255 | 6.4 | 2,484 | 3.7 | 1,772 | 2.6 |
| More Than One Adult | 39,603 | | 37,758 | 95.3 | 1,845 | 4.7 | 1,158 | 2.9 | 686 | 1.7 |
| Women Living Alone | 16,068 | | 14,715 | 91.6 | 1,353 | 8.4 | 706 | 4.4 | 646 | 4.0 |
| Men Living Alone | 11,218 | | 10,160 | 90.6 | 1,058 | 9.4 | 619 | 5.5 | 439 | 3.9 |
| Households With Elderly | 24,748 | | 23,567 | 95.2 | 1,181 | 4.8 | 811 | 3.3 | 370 | 1.5 |
| Elderly Living Alone | 10,077 | | 9,547 | 94.7 | 529 | 5.3 | 322 | 3.2 | 207 | 2.1 |
| Race and Hispanic Ethnicity | | | | | | | | | | |
| White, Non-Hispanic | 79,076 | | 74,276 | 93.9 | 4,800 | 6.1 | 3,189 | 4.0 | 1,611 | 2.0 |
| Black, Non-Hispanic | 12,643 | | 10,251 | 81.1 | 2,393 | 18.9 | 1,618 | 12.8 | 774 | 6.1 |
| Hispanic ^f | 9,218 | | 7,580 | 82.2 | 1,638 | 17.8 | 1,156 | 12.5 | 482 | 5.2 |
| Other Non-Hispanic | 3,878 | | 3,556 | 91.7 | 322 | 8.3 | 203 | 5.2 | 119 | 3.1 |
| Household Income-to-Poverty Ratio | | | | | | | | | | |
| Under 1.00 | 11,344 | | 7,474 | 65.9 | 3,870 | 34.1 | 2,505 | 22.1 | 1,365 | 12.0 |
| Under 1.30 | 17,475 | | 12,216 | 69.9 | 5,258 | 30.1 | 3,419 | 19.6 | 1,840 | 10.5 |
| Under 1.85 | 27,335 | | 20,726 | 75.8 | 6,609 | 24.2 | 4,431 | 16.2 | 2,178 | 8.0 |
| 1.85 and Over | 63,925 | | 62,002 | 97.0 | 1,923 | 3.0 | 1,350 | 2.1 | 573 | 0.9 |
| Income Unknown | 13,556 | | 12,936 | 95.4 | 620 | 4.6 | 384 | 2.8 | 236 | 1.7 |
| Area of Residence^g | | | | | | | | | | |
| Inside Metropolitan Area | 84,415 | | 77,081 | 91.3 | 7,334 | 8.7 | 4,881 | 5.8 | 2,452 | 2.9 |
| In Central City | 26,771 | | 23,568 | 88.0 | 3,203 | 12.0 | 2,130 | 8.0 | 1,073 | 4.0 |
| Not In Central City | 43,145 | | 40,249 | 93.3 | 2,896 | 6.7 | 1,917 | 4.4 | 979 | 2.3 |
| Outside Metropolitan Area | 20,401 | | 18,583 | 91.1 | 1,818 | 8.9 | 1,284 | 6.3 | 534 | 2.6 |
| Census Geographic Region | | | | | | | | | | |
| Northeast | 20,002 | | 18,544 | 92.7 | 1,458 | 7.3 | 963 | 4.8 | 495 | 2.5 |
| Midwest | 24,610 | | 22,877 | 93.0 | 1,733 | 7.0 | 1,230 | 5.0 | 502 | 2.0 |
| South | 37,640 | | 33,989 | 90.3 | 3,651 | 9.7 | 2,480 | 6.6 | 1,171 | 3.1 |
| West | 22,564 | | 20,253 | 89.8 | 2,311 | 10.2 | 1,492 | 6.6 | 819 | 3.6 |

Source: Tabulations of Current Population Survey, Food Security Supplement data.
d,e,f,g -- See End Notes

TABLE C.4
Number of Adults by Food Security Status of Household, by Selected Household Characteristics, 1999.
(Based on data adjusted to be comparable to 1995-1997).^{ad}

| CHARACTERISTIC | TOTAL | | | FOOD SECURE | | FOOD INSECURE | | | |
|--|---------|---------|------|-------------|------|----------------|------|-------------|-----|
| | 1,000 | 1,000 | % | All | | Without Hunger | | With Hunger | |
| | | | | 1,000 | % | 1,000 | % | 1,000 | % |
| All Households | 199,117 | 182,794 | 91.8 | 16,323 | 8.2 | 11,447 | 5.7 | 4,875 | 2.4 |
| Household Composition | | | | | | | | | |
| With Children < 6 | 35,975 | 31,087 | 86.4 | 4,888 | 13.6 | 3,892 | 10.8 | 997 | 2.8 |
| With Children < 18 | 80,318 | 70,781 | 88.1 | 9,537 | 11.9 | 7,299 | 9.1 | 2,238 | 2.8 |
| Married Couple Families | 61,197 | 56,118 | 91.7 | 5,079 | 8.3 | 4,044 | 6.6 | 1,035 | 1.7 |
| Female Head, No Spouse | 13,654 | 10,080 | 73.8 | 3,574 | 26.2 | 2,623 | 19.2 | 950 | 7.0 |
| Male Head, No Spouse | 4,040 | 3,362 | 83.2 | 678 | 16.8 | 503 | 12.5 | 175 | 4.3 |
| Other Households with Child ^e | 1,426 | 1,220 | 85.5 | 206 | 14.5 | 128 | 9.0 | 78 | 5.5 |
| With No Children < 18 | 118,799 | 112,013 | 94.3 | 6,786 | 5.7 | 4,149 | 3.5 | 2,637 | 2.2 |
| More Than One Adult | 91,513 | 87,138 | 95.2 | 4,375 | 4.8 | 2,823 | 3.1 | 1,552 | 1.7 |
| Women Living Alone | 16,068 | 14,715 | 91.6 | 1,353 | 8.4 | 706 | 4.4 | 646 | 4.0 |
| Men Living Alone | 11,218 | 10,160 | 90.6 | 1,058 | 9.4 | 619 | 5.5 | 439 | 3.9 |
| Households With Elderly | 154,964 | 140,875 | 90.9 | 14,089 | 9.1 | 9,801 | 6.3 | 4,288 | 2.8 |
| Elderly Living Alone | 10,077 | 9,547 | 94.7 | 529 | 5.3 | 322 | 3.2 | 207 | 2.1 |
| Race and Hispanic Ethnicity | | | | | | | | | |
| White, Non-Hispanic | 147,918 | 139,760 | 94.5 | 8,158 | 5.5 | 5,643 | 3.8 | 2,515 | 1.7 |
| Black, Non-Hispanic | 22,983 | 18,903 | 82.2 | 4,080 | 17.8 | 2,897 | 12.6 | 1,183 | 5.1 |
| Hispanic ^f | 20,064 | 16,552 | 82.5 | 3,512 | 17.5 | 2,529 | 12.6 | 983 | 4.9 |
| Other Non-Hispanic | 8,152 | 7,579 | 93.0 | 573 | 7.0 | 379 | 4.6 | 194 | 2.4 |
| Household Income-to-Poverty Ratio | | | | | | | | | |
| Under 1.00 | 179,848 | 170,004 | 94.5 | 9,844 | 5.5 | 7,086 | 3.9 | 2,758 | 1.5 |
| Under 1.30 | 29,753 | 20,837 | 70.0 | 8,916 | 30.0 | 6,044 | 20.3 | 2,871 | 9.7 |
| Under 1.85 | 48,454 | 35,859 | 74.0 | 11,595 | 23.9 | 8,088 | 16.7 | 3,507 | 7.2 |
| 1.85 and Over | 124,727 | 121,163 | 97.1 | 3,564 | 2.9 | 2,579 | 2.1 | 985 | 0.8 |
| Income Unknown | 25,936 | 24,772 | 95.5 | 1,164 | 4.5 | 780 | 3.0 | 384 | 1.5 |
| Area of Residence^g | | | | | | | | | |
| Inside Metropolitan Area | 161,002 | 147,871 | 91.8 | 13,131 | 8.2 | 9,062 | 5.6 | 4,069 | 2.5 |
| In Central City | 147,918 | 139,760 | 94.5 | 8,158 | 5.5 | 5,643 | 3.8 | 2,515 | 1.7 |
| Not In Central City | 85,010 | 79,743 | 93.8 | 5,266 | 6.2 | 3,592 | 4.2 | 1,674 | 2.0 |
| Outside Metropolitan Area | 38,115 | 34,923 | 91.6 | 3,192 | 8.4 | 2,386 | 6.3 | 806 | 2.1 |
| Census Geographic Region | | | | | | | | | |
| Northeast | 38,526 | 36,041 | 93.6 | 2,485 | 6.4 | 1,709 | 4.4 | 776 | 2.0 |
| Midwest | 45,799 | 42,926 | 93.7 | 2,874 | 6.3 | 2,102 | 4.6 | 772 | 1.7 |
| South | 71,030 | 64,496 | 90.8 | 6,534 | 9.2 | 4,645 | 6.5 | 1,889 | 2.7 |
| West | 43,761 | 39,331 | 89.9 | 4,430 | 10.1 | 2,991 | 6.8 | 1,439 | 3.3 |

Source: Tabulations of Current Population Survey, Food Security Supplement data.
d,e,f,g -- See End Notes

TABLE C.5**Change In Household Food Security, Food Insecurity, and Hunger Prevalence, by Selected Household Characteristics, 1996-1998****(Based on data adjusted to be comparable to 1995-1997).^{dk}****(percentages)**

| CHARACTERISTIC | FOOD SECURE | | | FOOD INSECURE | | | | | | | | |
|--|-------------|------|-------------|---------------|------|-------------|----------------|------|-------------|-------------|------|-------------|
| | 1996 | 1998 | Change* | All | | | Without Hunger | | | With Hunger | | |
| | | | | 1996 | 1998 | Change* | 1996 | 1998 | Change* | 1996 | 1998 | Change* |
| | % | % | | % | % | | % | % | | % | % | |
| All Households | 89.6 | 89.9 | 0.3 | 10.4 | 10.1 | -0.3 | 6.3 | 6.6 | 0.3 | 4.1 | 3.5 | -0.6 |
| Household Composition | | | | | | | | | | | | |
| With Children < 6 | 82.7 | 83.7 | 1.0 | 17.2 | 16.2 | -1.0 | 11.9 | 12.4 | 0.5 | 5.2 | 3.8 | -1.4 |
| With Children < 18 | 84.5 | 84.8 | 0.3 | 15.4 | 15.2 | -0.2 | 10.3 | 11.1 | 0.8 | 5.1 | 4.1 | -1.0 |
| Married Couple Families | 89.8 | 90.4 | 0.6 | 7.0 | 9.6 | 2.6 | 7.1 | 7.6 | 0.5 | 2.9 | 2.0 | -0.9 |
| Female Head, No Spouse | 68.6 | 68.1 | -0.5 | 31.3 | 31.9 | 0.6 | 19.0 | 21.7 | 2.7 | 11.4 | 10.2 | -1.2 |
| Male Head, No Spouse | 82.7 | 84.4 | 1.7 | 17.2 | 15.6 | -1.6 | 11.4 | 10.6 | -0.8 | 5.8 | 5.0 | -0.8 |
| Other Households with Child ^e | 81.4 | 84.7 | 3.3 | 18.6 | 15.4 | -3.2 | 13.4 | 9.4 | -4.0 | 5.1 | 6.0 | 0.9 |
| With No Children < 18 | 92.5 | 92.9 | 0.4 | 7.4 | 7.1 | -0.3 | 3.9 | 4.0 | 0.1 | 3.4 | 3.1 | -0.3 |
| More Than One Adult | 94.6 | 94.7 | 0.1 | 5.3 | 5.4 | 0.1 | 2.9 | 3.2 | 0.3 | 2.3 | 2.2 | -0.1 |
| Women Living Alone | 90.0 | 90.7 | 0.7 | 9.9 | 9.3 | -0.6 | 5.2 | 5.2 | 0.0 | 4.6 | 4.1 | -0.5 |
| Men Living Alone | 89.3 | 89.7 | 0.4 | 10.6 | 10.3 | -0.3 | 5.0 | 5.0 | 0.0 | 5.5 | 5.3 | -0.2 |
| Households With Elderly | 95.0 | 94.5 | -0.5 | 5.0 | 5.5 | 0.5 | 3.1 | 3.7 | 0.6 | 1.8 | 1.8 | 0.0 |
| Elderly Living Alone | 94.1 | 94.7 | 0.6 | 5.8 | 5.3 | -0.5 | 3.6 | 3.4 | -0.2 | 2.2 | 1.9 | -0.3 |
| Race and Hispanic Ethnicity | | | | | | | | | | | | |
| White, Non-Hispanic | 92.6 | 92.9 | 0.3 | 7.3 | 7.1 | -0.2 | 4.4 | 4.6 | 0.2 | 2.9 | 2.5 | -0.4 |
| Black, Non-Hispanic | 77.6 | 79.4 | 1.8 | 22.3 | 20.5 | -1.8 | 13.8 | 12.5 | -1.3 | 8.4 | 8.0 | -0.4 |
| Hispanic ^f | 77.8 | 78.4 | 0.6 | 22.1 | 21.6 | -0.5 | 13.4 | 15.1 | 1.7 | 8.6 | 6.5 | -2.1 |
| Other Non-Hispanic | 90.0 | 88.8 | -1.2 | 9.9 | 11.2 | 1.3 | 6.3 | 7.8 | 1.5 | 3.6 | 3.4 | -0.2 |
| Household Income-to-Poverty Ratio | | | | | | | | | | | | |
| Under 1.00 | 65.0 | 64.7 | -0.3 | 35.0 | 35.4 | 0.4 | 20.1 | 22.0 | 1.9 | 14.8 | 13.4 | -1.4 |
| Under 1.30 | 68.7 | 68.1 | -0.6 | 31.2 | 31.9 | 0.7 | 18.2 | 20.3 | 2.1 | 12.9 | 11.6 | -1.3 |
| Under 1.85 | 74.8 | 74.0 | -0.8 | 25.1 | 25.9 | 0.8 | 15.2 | 16.9 | 1.7 | 9.9 | 9.0 | -0.9 |
| 1.85 and Over | 96.9 | 96.4 | -0.5 | 3.0 | 3.7 | 0.7 | 1.8 | 2.5 | 0.7 | 1.1 | 1.2 | 0.1 |
| Income Unknown | 95.3 | 94.4 | -0.9 | 4.6 | 5.6 | 1.0 | 2.8 | 3.2 | 0.4 | 1.8 | 2.4 | 0.6 |
| Area of Residence^g | | | | | | | | | | | | |
| Inside Metropolitan Area | 89.8 | 90.0 | 0.2 | 10.1 | 10.0 | -0.1 | 6.0 | 6.5 | 0.5 | 4.0 | 3.5 | -0.5 |
| In Central City | 86.3 | 86.0 | -0.3 | 13.6 | 14.0 | 0.4 | 8.0 | 8.5 | 0.5 | 5.6 | 5.5 | -0.1 |
| Not In Central City | 92.0 | 92.3 | 0.3 | 7.9 | 7.7 | -0.2 | 4.7 | 5.2 | 0.5 | 3.2 | 2.5 | -0.7 |
| Outside Metropolitan Area | 88.7 | 89.5 | 0.8 | 11.2 | 10.4 | -0.8 | 7.2 | 7.1 | -0.1 | 3.9 | 3.3 | -0.6 |
| Census Geographic Region | | | | | | | | | | | | |
| Northeast | 92.2 | 90.9 | -1.3 | 7.7 | 9.1 | 1.4 | 4.6 | 5.9 | 1.3 | 3.0 | 3.2 | 0.2 |
| Midwest | 91.3 | 92.2 | 0.9 | 8.7 | 7.7 | -1.0 | 5.2 | 5.1 | -0.1 | 3.3 | 2.6 | -0.7 |
| South | 88.1 | 89.0 | 0.9 | 11.8 | 11.0 | -0.8 | 7.3 | 7.1 | -0.2 | 4.5 | 3.9 | -0.6 |
| West | 87.7 | 87.9 | 0.2 | 12.2 | 12.1 | -0.1 | 7.3 | 7.9 | 0.6 | 4.9 | 4.2 | -0.7 |

*Change in percentage points.

Source: Tabulations of Current Population Survey, Food Security Supplement data.

d,e,f,g,k -- See End Notes

TABLE C.6**Change In Household Food Security, Food Insecurity, and Hunger Prevalence, by Selected Household Characteristics, 1995-1999****(Based on data adjusted to be comparable to 1995-1997).^{dk}****(percentages)**

| CHARACTERISTIC | FOOD SECURE | | | | | | FOOD INSECURE | | | | | | |
|--|-------------|------|-------------|------|---------|-------------|---------------|----------------|-------------|---------|-------------|-------------|---------|
| | 1995 | | 1999 | | Change* | All | | Without Hunger | | | With Hunger | | |
| | % | % | % | % | | 1995 | 1999 | 1995 | 1999 | Change* | 1995 | 1999 | Change* |
| All Households | 89.7 | 91.3 | 1.6 | 10.3 | 8.7 | -1.6 | 6.4 | 5.9 | -0.5 | 3.9 | 2.8 | -1.1 | |
| Household Composition | | | | | | | | | | | | | |
| With Children < 6 | 83.1 | 85.6 | 2.5 | 16.9 | 14.4 | -2.5 | 11.9 | 11.4 | -0.5 | 5.0 | 3.0 | -2.0 | |
| With Children < 18 | 84.6 | 87.1 | 2.5 | 15.4 | 12.9 | -2.5 | 10.5 | 9.7 | -0.8 | 4.9 | 3.2 | -1.7 | |
| Married Couple Families | 90.1 | 92.0 | 1.9 | 9.9 | 8.0 | -1.9 | 7.2 | 6.4 | -0.8 | 2.6 | 1.6 | -1.0 | |
| Female Head, No Spouse | 67.8 | 73.0 | 5.2 | 32.2 | 26.9 | -5.3 | 20.2 | 19.2 | -1.0 | 11.9 | 7.7 | -4.2 | |
| Male Head, No Spouse | 83.9 | 84.9 | 1.0 | 16.1 | 15.1 | -1.0 | 11.2 | 11.1 | -0.1 | 4.8 | 4.0 | -0.8 | |
| Other Households with Child ^e | 82.1 | 86.3 | 4.2 | 18.1 | 13.7 | -4.4 | 7.8 | 9.4 | 1.6 | 10.3 | 4.3 | -6.0 | |
| With No Children < 18 | 92.8 | 93.6 | 0.8 | 7.2 | 6.3 | -0.9 | 3.9 | 3.7 | -0.2 | 3.3 | 2.6 | -0.7 | |
| More Than One Adult | 94.8 | 95.3 | 0.5 | 5.2 | 4.6 | -0.6 | 3.1 | 2.9 | -0.2 | 2.1 | 1.7 | -0.4 | |
| Women Living Alone | 90.5 | 91.6 | 1.1 | 9.5 | 8.4 | -1.1 | 5.3 | 4.4 | -0.9 | 4.2 | 4.0 | -0.2 | |
| Men Living Alone | 89.4 | 90.6 | 1.2 | 10.6 | 9.4 | -1.2 | 4.6 | 5.5 | 0.9 | 6.0 | 3.9 | -2.1 | |
| Households With Elderly | 95.0 | 95.2 | 0.2 | 5.0 | 4.8 | -0.2 | 3.1 | 3.3 | 0.2 | 1.9 | 1.5 | -0.4 | |
| Elderly Living Alone | 94.4 | 94.7 | 0.3 | 5.6 | 5.3 | -0.3 | 3.2 | 3.2 | 0.0 | 2.4 | 2.1 | -0.3 | |
| Race and Hispanic Ethnicity | | | | | | | | | | | | | |
| White, Non-Hispanic | 92.6 | 93.9 | 1.3 | 7.4 | 6.0 | -1.4 | 4.6 | 4.0 | -0.6 | 2.8 | 2.0 | -0.8 | |
| Black, Non-Hispanic | 78.5 | 81.1 | 2.6 | 21.5 | 18.9 | -2.6 | 12.8 | 12.8 | 0.0 | 8.8 | 6.1 | -2.7 | |
| Hispanic ^f | 77.5 | 82.2 | 4.7 | 22.5 | 17.7 | -4.8 | 14.6 | 12.5 | -2.1 | 7.9 | 5.2 | -2.7 | |
| Other Non-Hispanic | 89.8 | 91.7 | 1.9 | 10.2 | 8.3 | -1.9 | 6.0 | 5.2 | -0.8 | 4.2 | 3.1 | -1.1 | |
| Household Income-to-Poverty Ratio | | | | | | | | | | | | | |
| Under 1.00 | 67.8 | 65.9 | -1.9 | 32.2 | 34.1 | 1.9 | 19.2 | 22.1 | 2.9 | 13.0 | 12.0 | -1.0 | |
| Under 1.30 | 70.9 | 69.9 | -1.0 | 29.1 | 30.1 | 1.0 | 17.3 | 19.6 | 2.3 | 11.8 | 10.5 | -1.3 | |
| Under 1.85 | 75.0 | 75.8 | 0.8 | 25.0 | 24.2 | -0.8 | 15.3 | 16.2 | 0.9 | 9.8 | 8.0 | -1.8 | |
| 1.85 and Over | 97.0 | 97.0 | 0.0 | 3.0 | 3.0 | 0.0 | 2.0 | 2.1 | 0.1 | 1.0 | 0.9 | -0.1 | |
| Income Unknown | 94.6 | 95.4 | 0.8 | 5.4 | 4.5 | -0.9 | 3.3 | 2.8 | -0.5 | 2.1 | 1.7 | -0.4 | |
| Area of Residence^g | | | | | | | | | | | | | |
| Inside Metropolitan Area | 89.8 | 91.3 | 1.5 | 10.2 | 8.7 | -1.5 | 6.2 | 5.8 | -0.4 | 4.0 | 2.9 | -1.1 | |
| In Central City | 85.8 | 88.0 | 2.2 | 14.2 | 12.0 | -2.2 | 8.6 | 8.0 | -0.6 | 5.6 | 4.0 | -1.6 | |
| Not In Central City | 92.1 | 93.3 | 1.2 | 7.9 | 6.7 | -1.2 | 4.7 | 4.4 | -0.3 | 3.2 | 2.3 | -0.9 | |
| Outside Metropolitan Area | 89.2 | 91.1 | 1.9 | 10.8 | 8.9 | -1.9 | 7.0 | 6.3 | -0.7 | 3.8 | 2.6 | -1.2 | |
| Census Geographic Region | | | | | | | | | | | | | |
| Northeast | 91.3 | 92.7 | 1.4 | 8.7 | 7.3 | -1.4 | 5.4 | 4.8 | -0.6 | 3.3 | 2.5 | -0.8 | |
| Midwest | 90.7 | 93.0 | 2.3 | 9.3 | 7.0 | -2.3 | 5.8 | 5.0 | -0.8 | 3.5 | 2.0 | -1.5 | |
| South | 89.0 | 90.3 | 1.3 | 11.0 | 9.7 | -1.3 | 7.0 | 6.6 | -0.4 | 4.1 | 3.1 | -1.0 | |
| West | 88.3 | 89.8 | 1.5 | 11.7 | 10.2 | -1.5 | 7.0 | 6.6 | -0.4 | 4.7 | 3.6 | -1.1 | |

*Change in percentage points.

Source: Tabulations of Current Population Survey, Food Security Supplement data.

d,e,f,g,k -- See End Notes

TABLE C.7**Change In Household Food Security, Food Insecurity, and Hunger Prevalence, by Selected Household Characteristics, 1997-1999****(Based on data adjusted to be comparable to 1995-1997).^{dk}****(percentages)**

| CHARACTERISTIC | FOOD SECURE | | | FOOD INSECURE | | | | | | | | |
|--|-------------|------|-------------|---------------|------|-------------|----------------|------|-------------|-------------|------|-------------|
| | 1997 | 1999 | Change* | All | | | Without Hunger | | | With Hunger | | |
| | | | | 1997 | 1999 | Change* | 1997 | 1999 | Change* | 1997 | 1999 | Change* |
| | % | % | | % | % | | % | % | | % | % | |
| All Households | 91.2 | 91.3 | 0.1 | 8.7 | 8.7 | 0.0 | 5.6 | 5.9 | 0.3 | 3.1 | 2.8 | -0.3 |
| Household Composition | | | | | | | | | | | | |
| With Children < 6 | 86.3 | 85.6 | -0.7 | 13.6 | 14.4 | 0.8 | 10.1 | 11.4 | 1.3 | 3.4 | 3.0 | -0.4 |
| With Children < 18 | 84.1 | 87.1 | 3.0 | 12.8 | 12.9 | 0.1 | 9.1 | 9.7 | 0.6 | 3.6 | 3.2 | -0.4 |
| Married Couple Families | 92.4 | 92.0 | -0.4 | 7.5 | 8.0 | 0.5 | 5.7 | 6.4 | 0.7 | 1.8 | 1.6 | -0.2 |
| Female Head, No Spouse | 72.0 | 73.0 | 1.0 | 27.9 | 26.9 | -1.0 | 18.7 | 19.2 | 0.5 | 9.2 | 7.7 | -1.5 |
| Male Head, No Spouse | 85.7 | 84.9 | -0.8 | 14.2 | 15.1 | 0.9 | 11.4 | 11.1 | -0.3 | 2.8 | 4.0 | 1.2 |
| Other Households with Child ^e | 85.1 | 86.3 | 1.2 | 14.8 | 13.7 | -1.1 | 10.3 | 9.4 | -0.9 | 4.4 | 4.3 | -0.1 |
| With No Children < 18 | 93.6 | 93.6 | 0.0 | 6.3 | 6.3 | 0.0 | 3.5 | 3.7 | 0.2 | 2.7 | 2.6 | -0.1 |
| More Than One Adult | 95.4 | 95.3 | -0.1 | 4.5 | 4.6 | 0.1 | 2.8 | 2.9 | 0.1 | 1.7 | 1.7 | 0.0 |
| Women Living Alone | 92.0 | 91.6 | -0.4 | 7.9 | 8.4 | 0.5 | 4.4 | 4.4 | 0.0 | 3.5 | 4.0 | 0.5 |
| Men Living Alone | 90.5 | 90.6 | 0.1 | 9.3 | 9.4 | 0.1 | 4.5 | 5.5 | 1.0 | 4.8 | 3.9 | -0.9 |
| Households With Elderly | 95.4 | 95.2 | -0.2 | 4.5 | 4.8 | 0.3 | 3.1 | 3.3 | 0.2 | 1.4 | 1.5 | 0.1 |
| Elderly Living Alone | 95.0 | 94.7 | -0.3 | 5.6 | 5.3 | -0.3 | 3.1 | 3.2 | 0.1 | 1.7 | 2.1 | 0.4 |
| Race and Hispanic Ethnicity | | | | | | | | | | | | |
| White, Non-Hispanic | 93.9 | 93.9 | 0.0 | 6.4 | 6.0 | -0.4 | 3.7 | 4.0 | 0.3 | 2.3 | 2.0 | -0.3 |
| Black, Non-Hispanic | 81.4 | 81.1 | -0.3 | 18.5 | 18.9 | 0.4 | 12.1 | 12.8 | 0.7 | 6.4 | 6.1 | -0.3 |
| Hispanic ^f | 80.5 | 82.2 | 1.7 | 19.4 | 17.7 | -1.7 | 13.9 | 12.5 | -1.4 | 5.4 | 5.2 | -0.2 |
| Other Non-Hispanic | 92.0 | 91.7 | -0.3 | 7.9 | 8.3 | 0.4 | 5.1 | 5.2 | 0.1 | 2.8 | 3.1 | 0.3 |
| Household Income-to-Poverty Ratio | | | | | | | | | | | | |
| Under 1.00 | 69.7 | 65.9 | -3.8 | 30.2 | 34.1 | 3.9 | 18.7 | 22.1 | 3.4 | 11.5 | 12.0 | 0.5 |
| Under 1.30 | 73.4 | 69.9 | -3.5 | 26.5 | 30.1 | 3.6 | 16.6 | 19.6 | 3.0 | 9.8 | 10.5 | 0.7 |
| Under 1.85 | 78.3 | 75.8 | -2.5 | 21.7 | 24.2 | 2.5 | 14.0 | 16.2 | 2.2 | 7.6 | 8.0 | 0.4 |
| 1.85 and Over | 97.4 | 97.0 | -0.4 | 2.5 | 3.0 | 0.5 | 1.6 | 2.1 | 0.5 | 0.8 | 0.9 | 0.1 |
| Income Unknown | 95.1 | 95.4 | 0.3 | 3.2 | 4.5 | 1.3 | 3.0 | 2.8 | -0.2 | 1.8 | 1.7 | -0.1 |
| Area of Residence^g | | | | | | | | | | | | |
| Inside Metropolitan Area | 91.4 | 91.3 | -0.1 | 8.1 | 8.7 | 0.6 | 5.4 | 5.8 | 0.4 | 3.1 | 2.9 | -0.2 |
| In Central City | 88.3 | 88.0 | -0.3 | 11.6 | 12.0 | 0.4 | 6.9 | 8.0 | 1.1 | 4.6 | 4.0 | -0.6 |
| Not In Central City | 93.3 | 93.3 | 0.0 | 6.6 | 6.7 | 0.1 | 4.4 | 4.4 | 0.0 | 2.2 | 2.3 | 0.1 |
| Outside Metropolitan Area | 90.6 | 91.1 | 0.5 | 9.3 | 8.9 | -0.4 | 6.5 | 6.3 | -0.2 | 2.8 | 2.6 | -0.2 |
| Census Geographic Region | | | | | | | | | | | | |
| Northeast | 92.1 | 92.7 | 0.6 | 7.8 | 7.3 | -0.5 | 4.8 | 4.8 | 0.0 | 2.9 | 2.5 | -0.4 |
| Midwest | 92.4 | 93.0 | 0.6 | 7.5 | 7.0 | -0.5 | 4.6 | 5.0 | 0.4 | 2.9 | 2.0 | -0.9 |
| South | 90.5 | 90.3 | -0.2 | 9.4 | 9.7 | 0.3 | 6.3 | 6.6 | 0.3 | 3.1 | 3.1 | 0.0 |
| West | 90.4 | 89.8 | -0.6 | 9.5 | 10.2 | 0.7 | 6.3 | 6.6 | 0.3 | 3.2 | 3.6 | 0.4 |

*Change in percentage points.

Source: Tabulations of Current Population Survey, Food Security Supplement data.

d,e,f,g,k -- See End Notes

TABLE C.8**Change In Prevalence of Hunger Among Children, by Selected Household Characteristics, 1996-1998, 1995-1999, 1997-1999**

(Based on data adjusted to be comparable to 1995-1997).

(percentages)

CHARACTERISTIC

| | CHANGE IN PREVALENCE OF HUNGER AMONG CHILDREN | | | | | | | | |
|--|---|------|----------------|------|------|----------------|------|------|----------------|
| | 1996 | 1998 | Change* | 1995 | 1999 | Change* | 1997 | 1999 | Change* |
| | % | % | | % | % | | % | % | |
| All Households | 1.0 | 0.9 | -0.1 | 1.1 | 0.6 | -0.5 ** | 0.8 | 0.6 | -0.2 ** |
| Household Composition | | | | | | | | | |
| With Children < 6 | 0.8 | 0.5 | -0.3 ** | 0.9 | 0.4 | -0.5 ** | 0.6 | 0.4 | -0.2 ** |
| With Children < 18 | 1.0 | 0.9 | -0.1 | 1.1 | 0.6 | -0.5 ** | 0.8 | 0.6 | -0.2 ** |
| Married Couple Families | 0.4 | 0.4 | 0.0 | 0.5 | 0.3 | -0.2 ** | 0.3 | 0.3 | 0.0 |
| Female Head, No Spouse | 2.6 | 2.2 | -0.4 | 2.6 | 1.4 | -1.2 ** | 2.3 | 1.4 | -0.9 ** |
| Male Head, No Spouse | 1.2 | 0.9 | -0.3 | 1.3 | 0.8 | -0.5 | 0.4 | 0.8 | 0.4 |
| Other Households with Child ^e | 1.6 | 1.8 | 0.2 | 1.9 | 0.5 | -1.4 | 1.2 | 0.5 | -0.7 |
| Race and Hispanic Ethnicity | | | | | | | | | |
| White, Non-Hispanic | 0.5 | 0.6 | 0.1 | 0.7 | 0.4 | -0.3 ** | 0.5 | 0.4 | -0.1 |
| Black, Non-Hispanic | 2.4 | 1.7 | -0.7 | 2.2 | 1.0 | -1.2 ** | 1.8 | 1.0 | -0.8 ** |
| Hispanic ^f | 2.3 | 1.6 | -0.7 | 2.2 | 1.0 | -1.2 ** | 1.5 | 1.0 | -0.5 |
| Other Non-Hispanic | 0.7 | 0.7 | 0.0 | 1.0 | 0.9 | -0.1 | 0.7 | 0.9 | 0.2 |
| Household Income-to-Poverty Ratio | | | | | | | | | |
| Under 1.00 | 3.3 | 3.0 | -0.3 | 3.1 | 1.9 | -1.2 ** | 2.0 | 1.9 | -0.1 |
| Under 1.30 | 3.2 | 2.9 | -0.3 | 3.1 | 1.7 | -1.4 ** | 2.1 | 1.7 | -0.4 ** |
| Under 1.85 | 2.2 | 0.2 | -2.0 | 2.4 | 1.5 | -0.9 ** | 1.8 | 1.5 | -0.3 ** |
| 1.85 and Over | 0.2 | 0.2 | 0.0 | 0.2 | 0.2 | 0.0 | 0.2 | 0.2 | 0.0 |
| Income Unknown | 0.7 | 0.4 | -0.3 | 0.8 | 0.1 | -0.7 ** | 0.6 | 0.1 | -0.5 |
| Area of Residence^g | | | | | | | | | |
| Inside Metropolitan Area | 1.1 | 0.8 | -0.3 | 1.2 | 0.6 | -0.6 ** | 0.9 | 0.6 | -0.3 ** |
| In Central City | 1.9 | 1.2 | -0.7 ** | 1.6 | 0.7 | -0.9 ** | 1.4 | 0.7 | -0.7 ** |
| Not In Central City | 0.7 | 0.7 | 0.0 | 1.1 | 0.6 | -0.5 ** | 0.6 | 0.6 | 0.0 |
| Outside Metropolitan Area | 0.6 | 1.1 | 0.5 | 0.6 | 0.4 | -0.2 | 0.4 | 0.4 | 0.0 |
| Census Geographic Region | | | | | | | | | |
| Northeast | 0.9 | 0.7 | -0.2 | 0.7 | 0.4 | -0.3 ** | 0.7 | 0.4 | -0.3 |
| Midwest | 0.7 | 0.8 | 0.1 | 0.8 | 0.4 | -0.4 ** | 0.7 | 0.4 | -0.3 ** |
| South | 1.0 | 0.9 | -0.1 | 1.2 | 0.6 | -0.6 ** | 0.8 | 0.6 | -0.2 ** |
| West | 1.4 | 1.0 | -0.4 | 1.6 | 0.9 | -0.7 ** | 1.0 | 0.9 | -0.1 |
| <i>*Change in percentage points.</i> | | | | | | | | | |
| <i>**Significant at the .10 level of significance.</i> | | | | | | | | | |

Source: Tabulations of Current Population Survey, Food Security Supplement data.
e,f,g -- See End Notes

D: Standard Errors of all Food Security Prevalence Rates

TABLE D.A.1
Standard Errors of Household Food Security Status by Selected Household Characteristics, 1998.¹

| CHARACTERISTIC | FOOD SECURE | | FOOD INSECURE | | | | | |
|--|-------------------|--------|-------------------|--------|-------------------|--------|-------------------|--------|
| | | | All | | Without Hunger | | With Hunger | |
| | # | % pts. | # | % pts. | # | % pts. | # | % pts. |
| All Households | 216,845 | 0.21 | 215,812 | 0.21 | 133,531 | 0.13 | 141,116 | 0.14 |
| Household Composition | Percentage Points | | Percentage Points | | Percentage Points | | Percentage Points | |
| With Children < 6 | 0.57 | | 0.57 | | 0.46 | | 0.30 | |
| With Children < 18 | 0.39 | | 0.39 | | 0.24 | | 0.25 | |
| Married Couple Families | 0.39 | | 0.39 | | 0.30 | | 0.16 | |
| Female Head, No Spouse | 0.93 | | 0.93 | | 0.64 | | 0.63 | |
| Male Head, No Spouse | 2.21 | | 2.21 | | 1.47 | | 1.10 | |
| Other Households with Child ^e | 2.15 | | 2.15 | | 1.82 | | 1.25 | |
| With No Children < 18 | 0.21 | | 0.21 | | 0.14 | | 0.12 | |
| More Than One Adult | 0.29 | | 0.29 | | 0.20 | | 0.17 | |
| Women Living Alone | 0.40 | | 0.40 | | 0.34 | | 0.35 | |
| Men Living Alone | 0.48 | | 0.48 | | 0.35 | | 0.29 | |
| Households With Elderly | 0.36 | | 0.36 | | 0.35 | | 0.27 | |
| Elderly Living Alone | 0.29 | | 0.29 | | 0.18 | | 0.18 | |
| Race and Hispanic Ethnicity | | | | | | | | |
| White, Non-Hispanic | 0.19 | | 0.19 | | 0.13 | | 0.12 | |
| Black, Non-Hispanic | 0.69 | | 0.69 | | 0.58 | | 0.40 | |
| Hispanic ^f | 1.05 | | 1.05 | | 0.75 | | 0.51 | |
| Other Non-Hispanic | 0.62 | | 0.62 | | 0.57 | | 0.35 | |
| Household Income-to-Poverty Ratio | | | | | | | | |
| Under 1.00 | 0.71 | | 0.71 | | 0.50 | | 0.52 | |
| Under 1.30 | 0.57 | | 0.57 | | 0.45 | | 0.40 | |
| Under 1.85 | 0.49 | | 0.49 | | 0.34 | | 0.35 | |
| 1.85 and Over | 0.13 | | 0.13 | | 0.12 | | 0.09 | |
| Income Unknown | 0.79 | | 0.79 | | 0.58 | | 0.37 | |
| Area of Residence^g | | | | | | | | |
| Inside Metropolitan Area | 0.25 | | 0.25 | | 0.16 | | 0.14 | |
| In Central City | 0.38 | | 0.38 | | 0.28 | | 0.26 | |
| Not In Central City | 0.39 | | 0.39 | | 0.25 | | 0.19 | |
| Outside Metropolitan Area | 0.38 | | 0.38 | | 0.37 | | 0.31 | |
| Census Geographic Region | | | | | | | | |
| Northeast | 0.31 | | 0.31 | | 0.22 | | 0.24 | |
| Midwest | 0.52 | | 0.52 | | 0.38 | | 0.20 | |
| South | 0.40 | | 0.40 | | 0.19 | | 0.32 | |
| West | 0.30 | | 0.30 | | 0.24 | | 0.14 | |

Source: Tabulations of Current Population Survey, Food Security Supplement data.
e,f,g,j -- See End Notes

| TABLE D.A.2 | | | | | | | | |
|--|--------------------|---------------|----------------------|---------------|-----------------------|---------------|--------------------|---------------|
| Standard Errors of Number of Adults by Food Security Status of Household, by Selected Household Characteristics, 1998.^{aj} | | | | | | | | |
| CHARACTERISTIC | FOOD SECURE | | FOOD INSECURE | | | | | |
| | | | All | | Without Hunger | | With Hunger | |
| | # | % pts. | # | % pts. | # | % pts. | # | % pts. |
| Adults in All Households | 649,850 | 0.21 | 406,818 | 0.21 | 281,182 | 0.15 | 238,560 | 0.12 |
| Household Composition | Percentage Points | | Percentage Points | | Percentage Points | | Percentage Points | |
| With Children < 6 | 0.53 | | 0.53 | | 0.45 | | 0.30 | |
| With Children < 18 | 0.39 | | 0.39 | | 0.27 | | 0.22 | |
| Married Couple Families | 0.45 | | 0.45 | | 0.35 | | 0.18 | |
| Female Head, No Spouse | 0.95 | | 0.95 | | 0.73 | | 0.57 | |
| Male Head, No Spouse | 2.49 | | 2.49 | | 1.76 | | 1.25 | |
| Other Households with Child ^c | 2.38 | | 2.38 | | 1.85 | | 1.13 | |
| With No Children < 18 | 0.27 | | 0.27 | | 0.19 | | 0.14 | |
| More Than One Adult | 0.34 | | 0.34 | | 0.24 | | 0.19 | |
| Women Living Alone | 0.41 | | 0.41 | | 0.35 | | 0.29 | |
| Men Living Alone | 0.47 | | 0.47 | | 0.34 | | 0.34 | |
| Households With Elderly | 0.33 | | 0.33 | | 0.22 | | 0.27 | |
| Elderly Living Alone | 0.37 | | 0.37 | | 0.35 | | 0.28 | |
| Race and Hispanic Ethnicity | | | | | | | | |
| White, Non-Hispanic | 0.19 | | 0.19 | | 0.14 | | 0.12 | |
| Black, Non-Hispanic | 0.78 | | 0.78 | | 0.65 | | 0.38 | |
| Hispanic ^f | 1.25 | | 1.25 | | 0.90 | | 0.50 | |
| Other Non-Hispanic | 0.55 | | 0.55 | | 0.56 | | 0.36 | |
| Household Income-to-Poverty Ratio | | | | | | | | |
| Under 1.00 | 0.90 | | 0.90 | | 0.67 | | 0.55 | |
| Under 1.30 | 0.70 | | 0.70 | | 0.56 | | 0.38 | |
| Under 1.85 | 0.52 | | 0.52 | | 0.43 | | 0.34 | |
| 1.85 and Over | 0.17 | | 0.17 | | 0.15 | | 0.11 | |
| Income Unknown | 0.98 | | 0.98 | | 0.78 | | 0.35 | |
| Area of Residence^g | | | | | | | | |
| Inside Metropolitan Area | 0.24 | | 0.24 | | 0.17 | | 0.12 | |
| In Central City | 0.39 | | 0.39 | | 0.32 | | 0.21 | |
| Not In Central City | 0.36 | | 0.36 | | 0.25 | | 0.16 | |
| Outside Metropolitan Area | 0.48 | | 0.48 | | 0.44 | | 0.33 | |
| Census Geographic Region | | | | | | | | |
| Northeast | 0.37 | | 0.37 | | 0.22 | | 0.21 | |
| Midwest | 0.60 | | 0.60 | | 0.47 | | 0.19 | |
| South | 0.35 | | 0.35 | | 0.22 | | 0.27 | |
| West | 0.31 | | 0.31 | | 0.23 | | 0.18 | |

Source: Tabulations of Current Population Survey, Food Security Supplement data.

a,e,f,g,j -- See End Notes

| TABLE D.A.3 | | | | | | | | |
|---|--------------------------|---------------|--------------------------|---------------|--------------------------|---------------|--------------------------|---------------|
| Standard Errors of Household Food Security Status by Selected Household Characteristics, 1999.¹ | | | | | | | | |
| CHARACTERISTIC | FOOD SECURE | | FOOD INSECURE | | | | | |
| | | | All | | Without Hunger | | With Hunger | |
| | # | % pts. | # | % pts. | # | % pts. | # | % pts. |
| All Households | 244,113 | 0.23 | 243,661 | 0.23 | 184,683 | 0.18 | 100,754 | 0.10 |
| Household Composition | Percentage Points | | Percentage Points | | Percentage Points | | Percentage Points | |
| With Children < 6 | 0.57 | | 0.57 | | 0.54 | | 0.20 | |
| With Children < 18 | 0.39 | | 0.39 | | 0.34 | | 0.16 | |
| Married Couple Families | 0.35 | | 0.35 | | 0.33 | | 0.10 | |
| Female Head, No Spouse | 0.96 | | 0.96 | | 0.83 | | 0.60 | |
| Male Head, No Spouse | 1.41 | | 1.41 | | 1.27 | | 0.75 | |
| Other Households with Child ^e | 3.90 | | 3.90 | | 2.82 | | 1.80 | |
| With No Children < 18 | 0.23 | | 0.23 | | 0.17 | | 0.12 | |
| More Than One Adult | 0.26 | | 0.26 | | 0.20 | | 0.12 | |
| Women Living Alone | 0.34 | | 0.34 | | 0.29 | | 0.22 | |
| Men Living Alone | 0.59 | | 0.59 | | 0.38 | | 0.34 | |
| Households With Elderly | 0.31 | | 0.31 | | 0.22 | | 0.17 | |
| Elderly Living Alone | 0.47 | | 0.47 | | 0.31 | | 0.32 | |
| Race and Hispanic Ethnicity | | | | | | | | |
| White, Non-Hispanic | 0.20 | | 0.20 | | 0.17 | | 0.08 | |
| Black, Non-Hispanic | 0.87 | | 0.87 | | 0.87 | | 0.32 | |
| Hispanic ^f | 0.74 | | 0.74 | | 0.58 | | 0.27 | |
| Other Non-Hispanic | 1.08 | | 1.08 | | 0.92 | | 0.56 | |
| Household Income-to-Poverty Ratio | | | | | | | | |
| Under 1.00 | 1.00 | | 1.00 | | 0.83 | | 0.51 | |
| Under 1.30 | 0.57 | | 0.57 | | 0.48 | | 0.33 | |
| Under 1.85 | 0.50 | | 0.50 | | 0.42 | | 0.24 | |
| 1.85 and Over | 0.26 | | 0.26 | | 0.21 | | 0.09 | |
| Income Unknown | 0.53 | | 0.53 | | 0.43 | | 0.23 | |
| Area of Residence^g | | | | | | | | |
| Inside Metropolitan Area | 0.24 | | 0.24 | | 0.19 | | 0.11 | |
| In Central City | 0.43 | | 0.43 | | 0.38 | | 0.19 | |
| Not In Central City | 0.25 | | 0.25 | | 0.23 | | 0.14 | |
| Outside Metropolitan Area | 0.37 | | 0.37 | | 0.37 | | 0.17 | |
| Census Geographic Region | | | | | | | | |
| Northeast | 0.61 | | 0.61 | | 0.52 | | 0.16 | |
| Midwest | 0.45 | | 0.45 | | 0.38 | | 0.18 | |
| South | 0.43 | | 0.43 | | 0.27 | | 0.21 | |
| West | 0.26 | | 0.26 | | 0.26 | | 0.26 | |

Source: Tabulations of Current Population Survey, Food Security Supplement data.

e,f,g,j -- See End Notes

| TABLE D.A.4 | | | | | | | | |
|--|--------------------------|---------------|--------------------------|---------------|--------------------------|---------------|--------------------------|---------------|
| Standard Errors of Number of Adults by Food Security Status of Household, | | | | | | | | |
| by Selected Household Characteristics, 1999.^{aj} | | | | | | | | |
| CHARACTERISTIC | FOOD SECURE | | FOOD INSECURE | | | | | |
| | | | All | | Without Hunger | | With Hunger | |
| | # | % pts. | # | % pts. | # | % pts. | # | % pts. |
| Adults in All Households | 618,797 | 0.26 | 542,481 | 0.26 | 420,649 | 0.20 | 178,630 | 0.09 |
| Household Composition | Percentage Points | | Percentage Points | | Percentage Points | | Percentage Points | |
| With Children < 6 | 0.53 | | 0.53 | | 0.50 | | 0.21 | |
| With Children < 18 | 0.36 | | 0.36 | | 0.31 | | 0.14 | |
| Married Couple Families | 0.34 | | 0.34 | | 0.30 | | 0.11 | |
| Female Head, No Spouse | 1.09 | | 1.09 | | 1.14 | | 0.61 | |
| Male Head, No Spouse | 1.72 | | 1.72 | | 1.61 | | 0.84 | |
| Other Households with Child ^e | 4.14 | | 4.14 | | 2.76 | | 3.05 | |
| With No Children < 18 | 0.28 | | 0.28 | | 0.23 | | 0.10 | |
| More Than One Adult | 0.32 | | 0.32 | | 0.28 | | 0.11 | |
| Women Living Alone | 0.35 | | 0.35 | | 0.30 | | 0.22 | |
| Men Living Alone | 0.59 | | 0.59 | | 0.38 | | 0.34 | |
| Households With Elderly | 0.38 | | 0.38 | | 0.29 | | 0.15 | |
| Elderly Living Alone | 0.47 | | 0.47 | | 0.31 | | 0.31 | |
| Race and Hispanic Ethnicity | | | | | | | | |
| White, Non-Hispanic | 0.22 | | 0.22 | | 0.18 | | 0.07 | |
| Black, Non-Hispanic | 0.92 | | 0.92 | | 0.76 | | 0.31 | |
| Hispanic ^f | 0.80 | | 0.80 | | 0.61 | | 0.32 | |
| Other Non-Hispanic | 1.14 | | 1.14 | | 0.95 | | 0.52 | |
| Household Income-to-Poverty Ratio | | | | | | | | |
| Under 1.00 | 0.96 | | 0.96 | | 0.80 | | 0.46 | |
| Under 1.30 | 0.53 | | 0.53 | | 0.45 | | 0.33 | |
| Under 1.85 | 0.49 | | 0.49 | | 0.41 | | 0.23 | |
| 1.85 and Over | 0.27 | | 0.27 | | 0.22 | | 0.07 | |
| Income Unknown | 0.64 | | 0.64 | | 0.49 | | 0.23 | |
| Area of Residence^g | | | | | | | | |
| Inside Metropolitan Area | 0.27 | | 0.27 | | 0.21 | | 0.10 | |
| In Central City | 0.47 | | 0.47 | | 0.41 | | 0.19 | |
| Not In Central City | 0.32 | | 0.32 | | 0.29 | | 0.14 | |
| Outside Metropolitan Area | 0.40 | | 0.40 | | 0.33 | | 0.16 | |
| Census Geographic Region | | | | | | | | |
| Northeast | 0.48 | | 0.48 | | 0.40 | | 0.13 | |
| Midwest | 0.56 | | 0.56 | | 0.48 | | 0.19 | |
| South | 0.50 | | 0.50 | | 0.35 | | 0.18 | |
| West | 0.35 | | 0.35 | | 0.32 | | 0.09 | |

Source: Tabulations of Current Population Survey, Food Security Supplement data.

a,e,f,g,j -- See End Notes

TABLE D.A.5**Standard Errors of Food Security Scale Item Responses, 1998 and 1999.**

| Scale Item ⁱ | Percent of All Households Affirming Item (percentage points) | |
|--|--|------|
| | 1998 | 1999 |
| Household Items: | | |
| Worried food would run out before (I/we) got money to buy more | 0.27 | 0.33 |
| Food bought didn't last and (I/we) didn't have money to get more | 0.20 | 0.29 |
| Couldn't afford to eat balanced meals | 0.50 | 0.48 |
| Adult Items: | | |
| Adult(s) cut size of meals or skipped meals | 0.13 | 0.09 |
| Respondent ate less than felt he/she should | 0.08 | 0.08 |
| Adult(s) cut size or skipped meals in 3 or more months | 0.18 | 0.19 |
| Respondent hungry but didn't eat because couldn't afford | 0.13 | 0.06 |
| Respondent lost weight | 0.06 | 0.07 |
| Adult(s) did not eat for whole day | 0.20 | 0.09 |
| Adult(s) did not eat for whole day in 3 or more months | 0.13 | 0.12 |
| Child Items:^h | | |
| (See Table D.A.6) | | |

Source: Tabulations of Current Population Survey, Food Security Supplement data.

h,i -- See End Notes

TABLE D.A.6**Standard Errors of Food Security Scale Item Responses Among Households with Children, 1998 and 1999.**

| Scale Item ⁱ | Percent of All Households Affirming Item (percentage points) | |
|--|--|------|
| | 1998 | 1999 |
| Household Items: | | |
| Worried food would run out before (I/we) got money to buy more | 0.48 | 0.51 |
| Food bought didn't last and (I/we) didn't have money to get more | 0.37 | 0.52 |
| Couldn't afford to eat balanced meals | 0.50 | 0.48 |
| Adult Items: | | |
| Adult(s) cut size of meals or skipped meals | 0.24 | 0.17 |
| Respondent ate less than felt he/she should | 0.16 | 0.15 |
| Adult(s) cut size or skipped meals in 3 or more months | 0.31 | 0.23 |
| Respondent hungry but didn't eat because couldn't afford | 0.13 | 0.06 |
| Respondent lost weight | 0.09 | 0.10 |
| Adult(s) did not eat for whole day | 0.20 | 0.09 |
| Adult(s) did not eat for whole day in 3 or more months | 0.22 | 0.16 |
| Child Items:^h | | |
| Relied on few kinds of low-cost food to feed child(ren) | 0.33 | 0.35 |
| Couldn't feed child(ren) balanced meals | 0.35 | 0.26 |
| Child(ren) were not eating enough | 0.30 | 0.24 |
| Cut size of child(ren)'s meals | 0.07 | 0.09 |
| Child(ren) were hungry | 0.10 | 0.05 |
| Child(ren) skipped meals | 0.27 | 0.22 |
| Child(ren) skipped meals in 3 or more months | 0.05 | 0.05 |
| Child(ren) did not eat for whole day | 0.04 | 0.04 |

TABLE D.A.7

Standard Errors of Food Security Scale Item Responses, 1998 and 1999.^d (Based on data adjusted to be comparable to 1995-1997).

| Scale Itemⁱ | Percent of All Households Affirming Item (percentage points) | |
|--|---|-------------|
| | 1998 | 1999 |
| Household Items: | | |
| Worried food would run out before (I/we) got money to buy more | 0.27 | 0.33 |
| Food bought didn't last and (I/we) didn't have money to get more | 0.20 | 0.29 |
| Couldn't afford to eat balanced meals | 0.50 | 0.48 |
| Adult Items: | | |
| Adult(s) cut size of meals or skipped meals | 0.13 | 0.09 |
| Respondent ate less than felt he/she should | 0.08 | 0.08 |
| Adult(s) cut size or skipped meals in 3 or more months | 0.18 | 0.19 |
| Respondent hungry but didn't eat because couldn't afford | 0.13 | 0.06 |
| Respondent lost weight | 0.06 | 0.07 |
| Adult(s) did not eat for whole day | 0.20 | 0.09 |
| Adult(s) did not eat for whole day in 3 or more months | 0.13 | 0.12 |
| Child Items:^h (See Table D.A.8) | | |

Source: Tabulations of Current Population Survey, Food Security Supplement data.

d,h,i -- See End Notes

TABLE D.A.8
Standard Errors of Food Security Scale Item Responses Among Households with Children, 1998 and 1999.^d (Based on data adjusted to be comparable to 1995-1997).

| Scale Itemⁱ | Percent of All Households Affirming Item (percentage points) | |
|--|---|-------------|
| | 1998 | 1999 |
| Household Items: | | |
| Worried food would run out before (I/we) got money to buy more | 0.48 | 0.51 |
| Food bought didn't last and (I/we) didn't have money to get more | 0.37 | 0.52 |
| Couldn't afford to eat balanced meals | 0.50 | 0.48 |
| Adult Items: | | |
| Adult(s) cut size of meals or skipped meals | 0.24 | 0.17 |
| Respondent ate less than felt he/she should | 0.16 | 0.15 |
| Adult(s) cut size or skipped meals in 3 or more months | 0.31 | 0.23 |
| Respondent hungry but didn't eat because couldn't afford | 0.13 | 0.06 |
| Respondent lost weight | 0.09 | 0.10 |
| Adult(s) did not eat for whole day | 0.20 | 0.09 |
| Adult(s) did not eat for whole day in 3 or more months | 0.22 | 0.16 |
| Child Items:^h | | |
| Relied on few kinds of low-cost food to feed child(ren) | 0.33 | 0.35 |
| Couldn't feed child(ren) balanced meals | 0.35 | 0.26 |
| Child(ren) were not eating enough | 0.30 | 0.24 |
| Cut size of child(ren)'s meals | 0.07 | 0.09 |
| Child(ren) were hungry | 0.10 | 0.05 |
| Child(ren) skipped meals | 0.27 | 0.22 |
| Child(ren) skipped meals in 3 or more months | 0.05 | 0.05 |
| Child(ren) did not eat for whole day | 0.04 | 0.04 |

Source: Tabulations of Current Population Survey, Food Security Supplement data.

d,h,i -- See End Notes

TABLE D.B.1

Standard Errors of Food Insecurity and Hunger Among Households with Children, by Selected Household Characteristics, 1998.^j

| CHARACTERISTIC | Food Insecure | | Food Insecure Without Hunger | | Food Insecure With Hunger Among Adults But Not Children | | Food Insecure With Hunger Among Adults and Children | |
|--|-------------------|--------|------------------------------|--------|---|--------|---|--------|
| | # | % pts. | # | % pts. | # | % pts. | # | % pts. |
| Households with Children<18 | 143,551 | 0.39 | 98,511 | 0.24 | 59,991 | 0.17 | 51,475 | 0.14 |
| Household Composition | Percentage Points | | Percentage Points | | Percentage Points | | Percentage Points | |
| With Children < 6 | 0.57 | | 0.46 | | 0.31 | | 0.09 | |
| Married Couple Families | 0.39 | | 0.30 | | 0.12 | | 0.09 | |
| Female Head, No Spouse | 0.93 | | 0.64 | | 0.42 | | 0.38 | |
| Male Head, No Spouse | 2.21 | | 1.47 | | 0.91 | | 0.51 | |
| Other Households with Child ^c | 2.15 | | 1.82 | | 1.11 | | 0.89 | |
| Race and Hispanic Ethnicity | | | | | | | | |
| White, Non-Hispanic | 0.38 | | 0.26 | | 0.22 | | 0.09 | |
| Black, Non-Hispanic | 1.06 | | 0.87 | | 0.58 | | 0.30 | |
| Hispanic ^f | 1.20 | | 0.81 | | 0.38 | | 0.44 | |
| Other Non-Hispanic | 1.63 | | 0.97 | | 0.79 | | 0.54 | |
| Household Income-to-Poverty Ratio | | | | | | | | |
| Under 1.00 | 1.05 | | 0.87 | | 0.76 | | 0.53 | |
| Under 1.30 | 0.87 | | 0.84 | | 0.61 | | 0.53 | |
| Under 1.85 | 0.84 | | 0.59 | | 0.37 | | 0.40 | |
| 1.85 and Over | 0.28 | | 0.22 | | 0.11 | | 0.06 | |
| Income Unknown | 1.82 | | 1.09 | | 1.03 | | 0.19 | |
| Area of Residence^g | | | | | | | | |
| Inside Metropolitan Area | 0.42 | | 0.30 | | 0.16 | | 0.14 | |
| In Central City | 0.72 | | 0.55 | | 0.38 | | 0.22 | |
| Not In Central City | 0.81 | | 0.48 | | 0.28 | | 0.21 | |
| Outside Metropolitan Area | 0.87 | | 0.79 | | 0.47 | | 0.24 | |
| Census Geographic Region | | | | | | | | |
| Northeast | 0.44 | | 0.30 | | 0.21 | | 0.14 | |
| Midwest | 0.98 | | 0.76 | | 0.40 | | 0.17 | |
| South | 0.80 | | 0.38 | | 0.33 | | 0.32 | |
| West | 0.37 | | 0.25 | | 0.28 | | 0.28 | |

Source: Tabulations of Current Population Survey, Food Security Supplement data.
e,f,g,i -- See End Notes

TABLE D.B.2

Standard Errors of Number of Children in Households with Food Insecurity and Hunger, by Selected Household Characteristics, 1998.^{bj}

| CHARACTERISTIC | Food Insecure | | Food Insecure Without Hunger | | Food Insecure With Hunger Among Adults But Not Children | | Food Insecure With Hunger Among Adults and Children | |
|--|-------------------|--------|------------------------------|--------|---|--------|---|--------|
| | # | % pts. | # | % pts. | # | % pts. | # | % pts. |
| Children in all Households | 390,457 | 0.48 | 276,000 | 0.34 | 166,151 | 0.23 | 123,532 | 0.17 |
| Household Composition | Percentage Points | | Percentage Points | | Percentage Points | | Percentage Points | |
| Married Couple Families | 0.54 | | 0.42 | | 0.15 | | 0.13 | |
| Female Head, No Spouse | 1.54 | | 0.90 | | 0.70 | | 0.70 | |
| Male Head, No Spouse | 2.37 | | 1.77 | | 0.96 | | 0.99 | |
| Other Households with Child ^e | 3.14 | | 2.97 | | 1.31 | | 0.85 | |
| Race and Hispanic Ethnicity | Percentage Points | | Percentage Points | | Percentage Points | | Percentage Points | |
| White, Non-Hispanic | 0.41 | | 0.34 | | 0.21 | | 0.09 | |
| Black, Non-Hispanic | 1.20 | | 1.00 | | 0.83 | | 0.51 | |
| Hispanic ^f | 1.22 | | 0.82 | | 0.71 | | 0.46 | |
| Other Non-Hispanic | 2.86 | | 1.87 | | 1.09 | | 0.88 | |
| Household Income-to-Poverty Ratio | Percentage Points | | Percentage Points | | Percentage Points | | Percentage Points | |
| Under 1.00 | 1.25 | | 1.47 | | 1.03 | | 0.56 | |
| Under 1.30 | 1.06 | | 1.34 | | 0.84 | | 0.56 | |
| Under 1.85 | 0.90 | | 0.78 | | 0.55 | | 0.44 | |
| 1.85 and Over | 0.30 | | 0.24 | | 0.12 | | 0.09 | |
| Income Unknown | 2.01 | | 1.60 | | 0.97 | | 0.14 | |
| Area of Residence^g | Percentage Points | | Percentage Points | | Percentage Points | | Percentage Points | |
| Inside Metropolitan Area | 0.55 | | 0.41 | | 0.25 | | 0.21 | |
| In Central City | 0.81 | | 0.82 | | 0.52 | | 0.34 | |
| Not In Central City | 1.13 | | 0.62 | | 0.48 | | 0.28 | |
| Outside Metropolitan Area | 0.89 | | 0.85 | | 0.56 | | 0.22 | |
| Census Geographic Region | Percentage Points | | Percentage Points | | Percentage Points | | Percentage Points | |
| Northeast | 0.43 | | 0.32 | | 0.23 | | 0.11 | |
| Midwest | 1.10 | | 1.02 | | 0.40 | | 0.14 | |
| South | 1.11 | | 0.61 | | 0.40 | | 0.46 | |
| West | 0.48 | | 0.39 | | 0.64 | | 0.26 | |

Source: Tabulations of Current Population Survey, Food Security Supplement data.

b,e,f,g,i -- See End Notes

TABLE D.B.3
Standard Errors of Food Insecurity and Hunger Among Households with Children, by Selected Household Characteristics, 1999.^j

| CHARACTERISTIC | Food Insecure | | Food Insecure Without Hunger | | Food Insecure With Hunger Among Adults But Not Children | | Food Insecure With Hunger Among Adults and Children | |
|--|-------------------|--------|------------------------------|--------|---|--------|---|--------|
| | # | % pts. | # | % pts. | # | % pts. | # | % pts. |
| Households with Children | 128,259 | 0.39 | 116,537 | 0.34 | 56,038 | 0.15 | 22,185 | 0.06 |
| Household Composition | Percentage Points | | Percentage Points | | Percentage Points | | Percentage Points | |
| With Children < 6 | 0.57 | | 0.54 | | 0.20 | | 0.07 | |
| Married Couple Families | 0.35 | | 0.33 | | 0.11 | | 0.06 | |
| Female Head, No Spouse | 0.96 | | 0.83 | | 0.61 | | 0.19 | |
| Male Head, No Spouse | 1.41 | | 1.27 | | 0.62 | | 0.34 | |
| Other Households with Child ^e | 3.90 | | 2.82 | | 1.69 | | 0.61 | |
| Race and Hispanic Ethnicity | | | | | | | | |
| White, Non-Hispanic | 0.40 | | 0.39 | | 0.11 | | 0.07 | |
| Black, Non-Hispanic | 1.53 | | 1.10 | | 0.76 | | 0.25 | |
| Hispanic ^f | 0.77 | | 0.65 | | 0.35 | | 0.17 | |
| Other Non-Hispanic | 1.34 | | 1.12 | | 0.63 | | 0.41 | |
| Household Income-to-Poverty Ratio | | | | | | | | |
| Under 1.00 | 1.23 | | 1.10 | | 0.60 | | 0.31 | |
| Under 1.30 | 0.85 | | 0.90 | | 0.50 | | 0.28 | |
| Under 1.85 | 0.83 | | 0.74 | | 0.36 | | 0.17 | |
| 1.85 and Over | 0.45 | | 0.39 | | 0.12 | | 0.04 | |
| Income Unknown | 1.29 | | 0.97 | | 0.75 | | 0.12 | |
| Area of Residence^g | | | | | | | | |
| Inside Metropolitan Area | 0.42 | | 0.38 | | 0.20 | | 0.06 | |
| In Central City | 0.91 | | 0.82 | | 0.33 | | 0.10 | |
| Not In Central City | 0.59 | | 0.51 | | 0.34 | | 0.10 | |
| Outside Metropolitan Area | 0.71 | | 0.67 | | 0.25 | | 0.12 | |
| Census Geographic Region | | | | | | | | |
| Northeast | 1.15 | | 0.93 | | 0.47 | | 0.15 | |
| Midwest | 0.99 | | 0.94 | | 0.14 | | 0.08 | |
| South | 0.57 | | 0.43 | | 0.26 | | 0.08 | |
| West | 0.30 | | 0.46 | | 0.36 | | 0.17 | |

Source: Tabulations of Current Population Survey, Food Security Supplement data.
e,f,g,i – See End Notes

| TABLE D.B.4 | | | | | | | | |
|---|--------------------------|---------------|-------------------------------------|---------------|--|---------------|--|---------------|
| Standard Errors of Number of Children in Households with Food Insecurity and Hunger, by Selected Household Characteristics, 1999.^{bj} | | | | | | | | |
| CHARACTERISTIC | Food Insecure | | Food Insecure Without Hunger | | Food Insecure With Hunger Among Adults But Not Children | | Food Insecure With Hunger Among Adults and Children | |
| | # | % pts. | # | % pts. | # | % pts. | # | % pts. |
| Children in all Households | 293,719 | 0.46 | 280,677 | 0.43 | 119,927 | 0.17 | 63,953 | 0.09 |
| Household Composition | Percentage Points | | Percentage Points | | Percentage Points | | Percentage Points | |
| Married Couple Families | 0.46 | | 0.43 | | 0.17 | | 0.09 | |
| Female Head, No Spouse | 1.05 | | 1.12 | | 0.61 | | 0.61 | |
| Male Head, No Spouse | 2.12 | | 1.65 | | 0.92 | | 0.41 | |
| Other Households with Child ^e | 4.90 | | 3.41 | | 2.07 | | 2.24 | |
| Race and Hispanic Ethnicity | Percentage Points | | Percentage Points | | Percentage Points | | Percentage Points | |
| White, Non-Hispanic | 0.45 | | 0.45 | | 0.13 | | 0.11 | |
| Black, Non-Hispanic | 1.46 | | 1.12 | | 0.69 | | 0.29 | |
| Hispanic ^f | 1.13 | | 0.93 | | 0.57 | | 0.26 | |
| Other Non-Hispanic | 2.12 | | 1.71 | | 0.92 | | 0.88 | |
| Household Income-to-Poverty Ratio | Percentage Points | | Percentage Points | | Percentage Points | | Percentage Points | |
| Under 1.00 | 1.34 | | 1.22 | | 0.66 | | 0.39 | |
| Under 1.30 | 0.91 | | 1.06 | | 0.55 | | 0.33 | |
| Under 1.85 | 0.82 | | 0.84 | | 0.39 | | 0.23 | |
| 1.85 and Over | 0.52 | | 0.46 | | 0.11 | | 0.05 | |
| Income Unknown | 2.17 | | 1.73 | | 0.95 | | 0.23 | |
| Area of Residence^g | Percentage Points | | Percentage Points | | Percentage Points | | Percentage Points | |
| Inside Metropolitan Area | 0.52 | | 0.48 | | 0.22 | | 0.09 | |
| In Central City | 1.09 | | 1.05 | | 0.35 | | 0.14 | |
| Not In Central City | 0.72 | | 0.66 | | 0.44 | | 0.14 | |
| Outside Metropolitan Area | 0.84 | | 0.80 | | 0.32 | | 0.21 | |
| Census Geographic Region | Percentage Points | | Percentage Points | | Percentage Points | | Percentage Points | |
| Northeast | 1.34 | | 1.25 | | 0.29 | | 0.09 | |
| Midwest | 1.22 | | 1.09 | | 0.18 | | 0.17 | |
| South | 0.58 | | 0.57 | | 0.25 | | 0.11 | |
| West | 0.54 | | 0.46 | | 0.59 | | 0.29 | |

Source: Tabulations of Current Population Survey, Food Security Supplement data.

b,e,f,g,j -- See End Notes

| TABLE D.B.5-7 | | | | | | |
|---|---|---------------|--------------------------|---------------|--------------------------|---------------|
| Standard Errors of Food Insecurity and Hunger Among Households with Children, by Selected Household Characteristics, 1995, 1996, 1997.^j | | | | | | |
| CHARACTERISTIC | Food Insecure With Hunger Among Adults and Children, Standard Errors, 1995-1997. | | | | | |
| | 1995 | | 1996 | | 1997 | |
| | # | % pts. | # | % pts. | # | % pts. |
| Households With Children | 36,279 | 0.09 | 39,138 | 0.10 | 37,644 | 0.10 |
| Household Composition | Percentage Points | | Percentage Points | | Percentage Points | |
| With Children < 6 | 0.12 | | 0.13 | | 0.08 | |
| With Children < 18 | 0.09 | | 0.10 | | 0.10 | |
| Married Couple Families | 0.07 | | 0.05 | | 0.06 | |
| Female Head, No Spouse | 0.31 | | 0.33 | | 0.26 | |
| Male Head, No Spouse | 0.53 | | 0.53 | | 0.20 | |
| Other Households with Child ^e | 1.70 | | 0.84 | | 0.86 | |
| Race and Hispanic Ethnicity | | | | | | |
| White, Non-Hispanic | 0.10 | | 0.07 | | 0.07 | |
| Black, Non-Hispanic | 0.40 | | 0.43 | | 0.29 | |
| Hispanic ^f | 0.35 | | 0.40 | | 0.27 | |
| Other Non-Hispanic | 0.36 | | 0.35 | | 0.35 | |
| Household Income-to-Poverty Ratio | | | | | | |
| Under 1.00 | 0.30 | | 0.58 | | 0.44 | |
| Under 1.30 | 0.29 | | 0.36 | | 0.28 | |
| Under 1.85 | 0.22 | | 0.24 | | 0.21 | |
| 1.85 and Over | 0.04 | | 0.04 | | 0.06 | |
| Income Unknown | 0.26 | | 0.34 | | 0.28 | |
| Area of Residence^g | | | | | | |
| Inside Metropolitan Area | 0.11 | | 0.11 | | 0.12 | |
| In Central City | 0.22 | | 0.34 | | 0.24 | |
| Not In Central City | 0.17 | | 0.11 | | 0.12 | |
| Outside Metropolitan Area | 0.14 | | 0.13 | | 0.14 | |
| Census Geographic Region | | | | | | |
| Northeast | 0.13 | | 0.11 | | 0.32 | |
| Midwest | 0.19 | | 0.09 | | 0.11 | |
| South | 0.19 | | 0.23 | | 0.11 | |
| West | 0.18 | | 0.22 | | 0.25 | |

Source: Tabulations of Current Population Survey, Food Security Supplement data.
e,g,j -- See End Notes

TABLE D.B.8-10**Standard Errors of Number of Children in Households with Food Insecurity and Hunger, by Selected Household Characteristics, 1995, 1996, 1997.^{bj}**

| CHARACTERISTIC | Food Insecure With Hunger Among Adults and Children, Standard Errors, 1995-1997. | | | | | |
|--|--|--------|-------------------|--------|-------------------|--------|
| | 1995 | | 1996 | | 1997 | |
| | # | % pts. | # | % pts. | # | % pts. |
| Households With Children | 84,433 | 0.12 | 188,048 | 0.12 | 158,399 | 0.10 |
| Household Composition | Percentage Points | | Percentage Points | | Percentage Points | |
| With Children < 18 | 0.12 | | 0.12 | | 0.10 | |
| Married Couple Families | 0.13 | | 0.09 | | 0.07 | |
| Female Head, No Spouse | 0.31 | | 0.40 | | 0.28 | |
| Male Head, No Spouse | 0.44 | | 0.61 | | 0.20 | |
| Other Households with Child ^c | 2.04 | | 0.73 | | 0.77 | |
| Race and Hispanic Ethnicity | | | | | | |
| White, Non-Hispanic | 0.11 | | 0.07 | | 0.07 | |
| Black, Non-Hispanic | 0.51 | | 0.42 | | 0.32 | |
| Hispanic ^f | 0.44 | | 0.58 | | 0.27 | |
| Other Non-Hispanic | 0.41 | | 0.35 | | 0.49 | |
| Household Income-to-Poverty Ratio | | | | | | |
| Under 1.00 | 0.41 | | 0.56 | | 0.39 | |
| Under 1.30 | 0.38 | | 0.40 | | 0.27 | |
| Under 1.85 | 0.26 | | 0.30 | | 0.21 | |
| 1.85 and Over | 0.06 | | 0.05 | | 0.06 | |
| Income Unknown | 0.31 | | 0.39 | | 0.20 | |
| Area of Residence^g | | | | | | |
| Inside Metropolitan Area | 0.14 | | 0.14 | | 0.13 | |
| In Central City | 0.22 | | 0.44 | | 0.30 | |
| Not In Central City | 0.27 | | 0.11 | | 0.24 | |
| Outside Metropolitan Area | 0.16 | | 0.15 | | 0.11 | |
| Census Geographic Region | | | | | | |
| Northeast | 0.10 | | 0.18 | | 0.38 | |
| Midwest | 0.19 | | 0.09 | | 0.18 | |
| South | 0.25 | | 0.26 | | 0.09 | |
| West | 0.29 | | 0.33 | | 0.22 | |

Source: Tabulations of Current Population Survey, Food Security Supplement data.

b,e,f,g,j -- See End Notes

| TABLE D.C.1 | | | | | | | | |
|--|--------------------------|---------------|--------------------------|---------------|--------------------------|---------------|--------------------------|---------------|
| Standard Errors of Household Food Security Status, by Selected Household Characteristics, 1998.^d | | | | | | | | |
| (Based on data adjusted to be comparable to 1995-1997.) | | | | | | | | |
| CHARACTERISTIC | FOOD SECURE | | FOOD INSECURE | | | | | |
| | | | All | | Without Hunger | | With Hunger | |
| | # | % pts. | # | % pts. | # | % pts. | # | % pts. |
| All Households | 172,127 | 0.17 | 174,381 | 0.17 | 117,257 | 0.11 | 128,254 | 0.12 |
| Household Composition | Percentage Points | | Percentage Points | | Percentage Points | | Percentage Points | |
| With Children < 6 | 0.50 | | 0.50 | | 0.44 | | 0.29 | |
| With Children < 18 | 0.33 | | 0.33 | | 0.23 | | 0.22 | |
| Married Couple Families | 0.36 | | 0.36 | | 0.27 | | 0.14 | |
| Female Head, No Spouse | 0.76 | | 0.76 | | 0.62 | | 0.56 | |
| Male Head, No Spouse | 1.63 | | 1.63 | | 1.14 | | 0.84 | |
| Other Households with Child ^e | 2.05 | | 2.05 | | 1.73 | | 1.21 | |
| With No Children < 18 | 0.17 | | 0.17 | | 0.12 | | 0.11 | |
| More Than One Adult | 0.24 | | 0.24 | | 0.17 | | 0.14 | |
| Women Living Alone | 0.34 | | 0.34 | | 0.28 | | 0.28 | |
| Men Living Alone | 0.40 | | 0.40 | | 0.29 | | 0.35 | |
| Households With Elderly | 0.27 | | 0.27 | | 0.17 | | 0.19 | |
| Elderly Living Alone | 0.32 | | 0.32 | | 0.36 | | 0.26 | |
| Race and Hispanic Ethnicity | | | | | | | | |
| White, Non-Hispanic | 0.17 | | 0.17 | | 0.11 | | 0.11 | |
| Black, Non-Hispanic | 0.61 | | 0.61 | | 0.53 | | 0.42 | |
| Hispanic ^f | 0.85 | | 0.85 | | 0.56 | | 0.48 | |
| Other Non-Hispanic | 0.64 | | 0.64 | | 0.55 | | 0.43 | |
| Household Income-to-Poverty Ratio | | | | | | | | |
| Under 1.00 | 0.69 | | 0.69 | | 0.50 | | 0.49 | |
| Under 1.30 | 0.55 | | 0.55 | | 0.44 | | 0.39 | |
| Under 1.85 | 0.46 | | 0.46 | | 0.32 | | 0.34 | |
| 1.85 and Over | 0.12 | | 0.12 | | 0.11 | | 0.08 | |
| Income Unknown | 0.53 | | 0.53 | | 0.35 | | 0.33 | |
| Area of Residence^g | | | | | | | | |
| Inside Metropolitan Area | 0.20 | | 0.20 | | 0.13 | | 0.12 | |
| In Central City | 0.30 | | 0.30 | | 0.23 | | 0.25 | |
| Not In Central City | 0.35 | | 0.35 | | 0.23 | | 0.17 | |
| Outside Metropolitan Area | 0.41 | | 0.41 | | 0.36 | | 0.30 | |
| Census Geographic Region | | | | | | | | |
| Northeast | 0.34 | | 0.34 | | 0.22 | | 0.23 | |
| Midwest | 0.39 | | 0.39 | | 0.25 | | 0.22 | |
| South | 0.31 | | 0.31 | | 0.19 | | 0.28 | |
| West | 0.27 | | 0.27 | | 0.26 | | 0.10 | |

Source: Tabulations of Current Population Survey, Food Security Supplement data.

d,e,f,g -- See End Notes

TABLE D.C.2**Standard Errors of Number of Adults by Food Security Status of Household, by Selected Household Characteristics, 1998.^{ad} (Based on data adjusted to be comparable to 1995-1997.)**

| CHARACTERISTIC | FOOD SECURE | | FOOD INSECURE | | | | | |
|--|-------------------|--------|-------------------|--------|-------------------|--------|-------------------|--------|
| | | | All | | Without Hunger | | With Hunger | |
| | # | % pts. | # | % pts. | # | % pts. | # | % pts. |
| Adults in All Households | 528,005 | 0.20 | 421,842 | 0.20 | 331,567 | 0.16 | 156,333 | 0.08 |
| Household Composition | Percentage Points | | Percentage Points | | Percentage Points | | Percentage Points | |
| With Children < 6 | 0.42 | | 0.42 | | 0.39 | | 0.20 | |
| With Children < 18 | 0.31 | | 0.31 | | 0.28 | | 0.13 | |
| Married Couple Families | 0.33 | | 0.33 | | 0.32 | | 0.11 | |
| Female Head, No Spouse | 1.04 | | 1.04 | | 0.90 | | 0.51 | |
| Male Head, No Spouse | 1.90 | | 1.90 | | 1.79 | | 0.85 | |
| Other Households with Child ^e | 4.25 | | 4.25 | | 2.90 | | 3.04 | |
| With No Children < 18 | 0.23 | | 0.23 | | 0.19 | | 0.09 | |
| More Than One Adult | 0.25 | | 0.25 | | 0.22 | | 0.10 | |
| Women Living Alone | 0.34 | | 0.34 | | 0.28 | | 0.23 | |
| Men Living Alone | 0.57 | | 0.57 | | 0.35 | | 0.33 | |
| Households With Elderly | 0.34 | | 0.34 | | 0.26 | | 0.15 | |
| Elderly Living Alone | 0.42 | | 0.42 | | 0.28 | | 0.31 | |
| Race and Hispanic Ethnicity | | | | | | | | |
| White, Non-Hispanic | 0.18 | | 0.18 | | 0.16 | | 0.07 | |
| Black, Non-Hispanic | 0.82 | | 0.82 | | 0.72 | | 0.29 | |
| Hispanic ^f | 0.65 | | 0.65 | | 0.53 | | 0.26 | |
| Other Non-Hispanic | 1.03 | | 1.03 | | 0.78 | | 0.52 | |
| Household Income-to-Poverty Ratio | | | | | | | | |
| Under 1.00 | 1.09 | | 1.09 | | 0.88 | | 0.48 | |
| Under 1.30 | 0.56 | | 0.56 | | 0.49 | | 0.31 | |
| Under 1.85 | 0.52 | | 0.52 | | 0.47 | | 0.22 | |
| 1.85 and Over | 0.19 | | 0.19 | | 0.16 | | 0.06 | |
| Income Unknown | 0.58 | | 0.58 | | 0.41 | | 0.25 | |
| Area of Residence^g | | | | | | | | |
| Inside Metropolitan Area | 0.21 | | 0.21 | | 0.17 | | 0.09 | |
| In Central City | 0.39 | | 0.39 | | 0.37 | | 0.18 | |
| Not In Central City | 0.26 | | 0.26 | | 0.23 | | 0.14 | |
| Outside Metropolitan Area | 0.34 | | 0.34 | | 0.28 | | 0.16 | |
| Census Geographic Region | | | | | | | | |
| Northeast | 0.44 | | 0.44 | | 0.36 | | 0.14 | |
| Midwest | 0.47 | | 0.47 | | 0.42 | | 0.17 | |
| South | 0.35 | | 0.35 | | 0.25 | | 0.14 | |
| West | 0.19 | | 0.19 | | 0.21 | | 0.09 | |

Source: Tabulations of Current Population Survey, Food Security Supplement data.

a,d,e,f,g -- See End Notes

TABLE D.C.3

Standard Errors of Household Food Security Status, by Selected Household Characteristics, 1999^d
(Based on data adjusted to be comparable to 1995-1997.)

| CHARACTERISTIC | FOOD SECURE | | FOOD INSECURE | | | | | |
|--|-------------------|--------|-------------------|--------|-------------------|--------|-------------------|--------|
| | | | All | | Without Hunger | | With Hunger | |
| | # | % pts. | # | % pts. | # | % pts. | # | % pts. |
| All Households | 199,817 | 0.19 | 202,685 | 0.19 | 157,261 | 0.15 | 90,891 | 0.09 |
| Household Composition | Percentage Points | | Percentage Points | | Percentage Points | | Percentage Points | |
| With Children < 6 | 0.50 | | 0.50 | | 0.48 | | 0.20 | |
| With Children < 18 | 0.35 | | 0.35 | | 0.30 | | 0.14 | |
| Married Couple Families | 0.34 | | 0.34 | | 0.32 | | 0.09 | |
| Female Head, No Spouse | 0.97 | | 0.97 | | 0.72 | | 0.52 | |
| Male Head, No Spouse | 1.56 | | 1.56 | | 1.35 | | 0.79 | |
| Other Households with Child ^e | 3.94 | | 3.94 | | 2.89 | | 1.79 | |
| With No Children < 18 | 0.20 | | 0.20 | | 0.15 | | 0.11 | |
| More Than One Adult | 0.21 | | 0.21 | | 0.16 | | 0.10 | |
| Women Living Alone | 0.34 | | 0.34 | | 0.28 | | 0.23 | |
| Men Living Alone | 0.57 | | 0.57 | | 0.35 | | 0.33 | |
| Households With Elderly | 0.27 | | 0.27 | | 0.19 | | 0.16 | |
| Elderly Living Alone | 0.43 | | 0.43 | | 0.28 | | 0.31 | |
| Race and Hispanic Ethnicity | | | | | | | | |
| White, Non-Hispanic | 0.17 | | 0.17 | | 0.16 | | 0.07 | |
| Black, Non-Hispanic | 0.86 | | 0.86 | | 0.73 | | 0.31 | |
| Hispanic ^f | 0.63 | | 0.63 | | 0.50 | | 0.24 | |
| Other Non-Hispanic | 0.97 | | 0.97 | | 0.73 | | 0.56 | |
| Household Income-to-Poverty Ratio | | | | | | | | |
| Under 1.00 | 1.06 | | 1.06 | | 0.85 | | 0.50 | |
| Under 1.30 | 0.59 | | 0.59 | | 0.49 | | 0.31 | |
| Under 1.85 | 0.48 | | 0.48 | | 0.42 | | 0.23 | |
| 1.85 and Over | 0.19 | | 0.19 | | 0.15 | | 0.07 | |
| Income Unknown | 0.47 | | 0.47 | | 0.35 | | 0.25 | |
| Area of Residence^g | | | | | | | | |
| Inside Metropolitan Area | 0.21 | | 0.21 | | 0.17 | | 0.10 | |
| In Central City | 0.38 | | 0.38 | | 0.35 | | 0.18 | |
| Not In Central City | 0.23 | | 0.23 | | 0.21 | | 0.14 | |
| Outside Metropolitan Area | 0.33 | | 0.33 | | 0.27 | | 0.17 | |
| Census Geographic Region | | | | | | | | |
| Northeast | 0.55 | | 0.55 | | 0.44 | | 0.17 | |
| Midwest | 0.37 | | 0.37 | | 0.32 | | 0.18 | |
| South | 0.35 | | 0.35 | | 0.24 | | 0.17 | |
| West | 0.21 | | 0.21 | | 0.19 | | 0.12 | |

Source: Tabulations of Current Population Survey, Food Security Supplement data.
d,e,f,g -- See End Notes

| TABLE D.C.4 | | | | | | | | |
|--|--------------------------|---------------|--------------------------|---------------|--------------------------|---------------|--------------------------|---------------|
| Standard Errors of Number of Adults by Food Security Status of Household, by Selected Household Characteristics, 1999.^{ad} (Based on data adjusted to be comparable to 1995-1997.) | | | | | | | | |
| CHARACTERISTIC | FOOD SECURE | | FOOD INSECURE | | | | | |
| | | | All | | Without Hunger | | With Hunger | |
| | # | % pts. | # | % pts. | # | % pts. | # | % pts. |
| All Households | 528,005 | 0.20 | 421,842 | 0.20 | 331,567 | 0.16 | 156,333 | 0.08 |
| Household Composition | Percentage Points | | Percentage Points | | Percentage Points | | Percentage Points | |
| With Children < 6 | 0.42 | | 0.42 | | 0.39 | | 0.20 | |
| With Children < 18 | 0.31 | | 0.31 | | 0.28 | | 0.13 | |
| Married Couple Families | 0.33 | | 0.33 | | 0.32 | | 0.11 | |
| Female Head, No Spouse | 1.04 | | 1.04 | | 0.90 | | 0.51 | |
| Male Head, No Spouse | 1.90 | | 1.90 | | 1.79 | | 0.85 | |
| Other Households with Child ^e | 4.25 | | 4.25 | | 2.90 | | 3.04 | |
| With No Children < 18 | 0.23 | | 0.23 | | 0.19 | | 0.09 | |
| More Than One Adult | 0.25 | | 0.25 | | 0.22 | | 0.10 | |
| Women Living Alone | 0.34 | | 0.34 | | 0.28 | | 0.23 | |
| Men Living Alone | 0.57 | | 0.57 | | 0.35 | | 0.33 | |
| Households With Elderly | 0.34 | | 0.34 | | 0.26 | | 0.15 | |
| Elderly Living Alone | 0.42 | | 0.42 | | 0.28 | | 0.31 | |
| Race and Hispanic Ethnicity | | | | | | | | |
| White, Non-Hispanic | 0.18 | | 0.18 | | 0.16 | | 0.07 | |
| Black, Non-Hispanic | 0.82 | | 0.82 | | 0.72 | | 0.29 | |
| Hispanic ^f | 0.65 | | 0.65 | | 0.53 | | 0.26 | |
| Other Non-Hispanic | 1.03 | | 1.03 | | 0.78 | | 0.52 | |
| Household Income-to-Poverty Ratio | | | | | | | | |
| Under 1.00 | 1.09 | | 1.09 | | 0.88 | | 0.48 | |
| Under 1.30 | 0.56 | | 0.56 | | 0.49 | | 0.31 | |
| Under 1.85 | 0.52 | | 0.52 | | 0.47 | | 0.22 | |
| 1.85 and Over | 0.19 | | 0.19 | | 0.16 | | 0.06 | |
| Income Unknown | 0.58 | | 0.58 | | 0.41 | | 0.25 | |
| Area of Residence^g | | | | | | | | |
| Inside Metropolitan Area | 0.21 | | 0.21 | | 0.17 | | 0.09 | |
| In Central City | 0.39 | | 0.39 | | 0.37 | | 0.18 | |
| Not In Central City | 0.26 | | 0.26 | | 0.23 | | 0.14 | |
| Outside Metropolitan Area | 0.34 | | 0.34 | | 0.28 | | 0.16 | |
| Census Geographic Region | | | | | | | | |
| Northeast | 0.44 | | 0.44 | | 0.36 | | 0.14 | |
| Midwest | 0.47 | | 0.47 | | 0.42 | | 0.17 | |
| South | 0.35 | | 0.35 | | 0.25 | | 0.14 | |
| West | 0.19 | | 0.19 | | 0.21 | | 0.09 | |

Source: Tabulations of Current Population Survey, Food Security Supplement data.

a,d,e,f,g -- See End Notes

END NOTES TO TABLES A.1 –D.C.4

- a. Using CPS person weights for adults.
- b. Using CPS person weights for children.
- c. Using CPS person weights for adults and children.
- d. Adjusted for screening differences so all years 1995-1999 are comparable.
- e. Households with children in complex living arrangements, e.g., children of other relatives or unrelated roommate or border.
- f. Hispanics may be of any race.
- g. Subtotals do not add to metropolitan totals because central city residence is not identified for some areas.
- h. Only asked in households with children.
- i. The actual wording of each item includes explicit reference to resource limitation, e.g., “because (I was/we were running out of money to buy food,” or “because there wasn’t enough money for food.”
- j. Based on data as collected; not adjusted for comparability to 1995-1997.
- k. P-values not calculated.

REFERENCES

- Anderson S., (ed.). "Core indicators of nutritional state for difficult-to-sample populations." A report prepared by the Life Sciences Research Office, Federation of American Societies for Experimental Biology for the American Institute of Nutrition under Cooperative Agreement No. HPU 880004-01-0, Nutritional Status Indicators of Low-Income Populations, with the Office of Disease Prevention and Health Promotion, Department of Health and Human Services. *Journal of Nutrition*, 120 (11S): 1557-1600, 1990.
- Andrews, M., Nord, M., Bickel, G., and Carlson, S. "Household Food Security in the United States, 1999, Advance Report." Washington, DC: Economic Research Service, U.S. Department of Agriculture, 2000.
- Andrich, D. "Rasch Models for Measurement." Newbury Park, CA: Sage Publications, 1988.
- Bickel, G., Carlson, S. and Nord, M. "Household Food Security in the United States, 1995-1998, Advance Report." Alexandria, VA: Office of Analysis, Nutrition and Evaluation, Food and Nutrition Service, U.S. Department of Agriculture, 1999.
- BILOG 3, 2nd Edition. Chicago, IL: Scientific Software, Inc. 1990.
- Campbell, C.C. "Food insecurity: a nutritional outcome or a predictor variable?" *Journal of Nutrition*. Mar; 121(3): 408-15. 1991.
- Cohen, B., Lerner, R., and Parry, J. "Household Food Security in the United States, 1998 and 1999: Technical Report." Food Assistance and Nutrition Research Report. Washington, DC: Economic Research Service, U.S. Department of Agriculture, 2002.
- Cohen, B., and Burt M. "Eliminating hunger: food security policy for the 1990s." Washington, D.C.: The Urban Institute, 1989.
- Hamilton W., Cook J., Thompson W., Buron L., Frongillo E., Olson C., and Wehler C. "Household food security in the United States in 1995, Summary Report of the Food Security Measurement Project." Alexandria, VA: Food and Consumer Service, U.S. Department of Agriculture, July 1997.
- Nord, M., and G. Bickel. "Estimating the Prevalence of Children's Hunger from the Current Population Survey Food Security Supplement: Second Food Security Measurement and research Conference, Volume II: Papers." Food Assistance and Nutrition Research Report 11-2, pp 31-49. Margaret Andrews and Mark Prell (eds.) Economic Research Service, U.S. Department of Agriculture, 2001.

Nord, M., and G. Bickel. "Measuring the Food Security of Children in U.S. Households, 1995-1999," Food Assistance and Nutrition Research Report No. 25. Washington, DC: Economic Research Service, U.S. Department of Agriculture, 2002.

Nord, M., K. Jemison, and G. Bickel. "Prevalence of Food Insecurity and Hunger, by State, 1996-1998." Washington, DC: Economic Research Service, U.S. Department of Agriculture, 1999.

Ohls, J., Radbill, L., and Schirm, L. "Household Food Security in the United States, 1995-1997: Technical Issues and Statistical Report" Alexandria, VA: Food and Consumer Service, U.S. Department of Agriculture, December, 2001.

Radimer, K.L., C.M. Olson, J.C. Greene, C.C. Campbell and J.P. Habicht, "Understanding Hunger and Developing Indicators To Assess it in Women and Children." *Journal of Nutrition Education* 24 (1):36S-44S, 1992.

Wehler, C.A., R.I. Scott, and J.J. Anderson, "The Community Childhood Hunger Identification Project: A Model of Domestic Hunger – Demonstration Project in Seattle, Washington." *Journal of Nutrition Education* 24 (1):29S-35S, 1992.